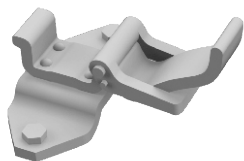


635 017 WWII German clamps
Type 1

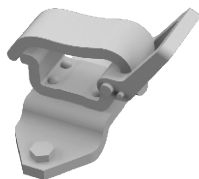
eduard
BRASSIN

Print

1/35 scale



R1 10pcs.



R2 30pcs.



R3 10pcs.

COLOURS

GSI Creos (GUNZE)			Mr.METAL COLOR	
AQUEOUS	Mr.COLOR			

635 017 WWII German clamps
Type 1

1/35

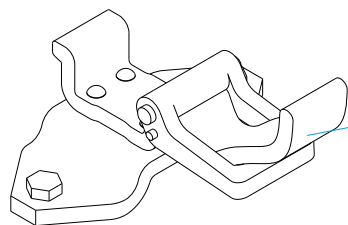


eduard

eduard
435 21 Obrnice 170
Czech Republic

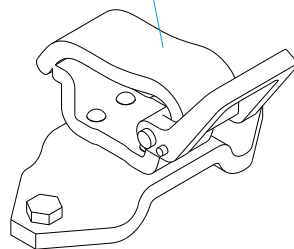
www.eduard.com
9,95



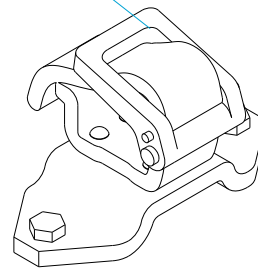


R1








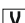

CAMOUFLAGE COLOR



R2



R3

- | | | | |
|---|---|---|---------------------|
|  | REMOVE
ODSTRANIT |  | BEND
OHNOUT |
|  | GRIND
OBROUSIT |  | OPTION
VOLBA |
|  | DRILL HOLE
VRTAT OTVOR |  | REPLACE
NAHRADIT |
|  | SYMMETRICAL ASSEMBLY
SYMETRICKÁ MONTÁŽ | | |
|  | SCRIBE THE PANEL AND HOLES
RYTI | | |
|  | REVERSE SIDE
OTOČIT | | |