

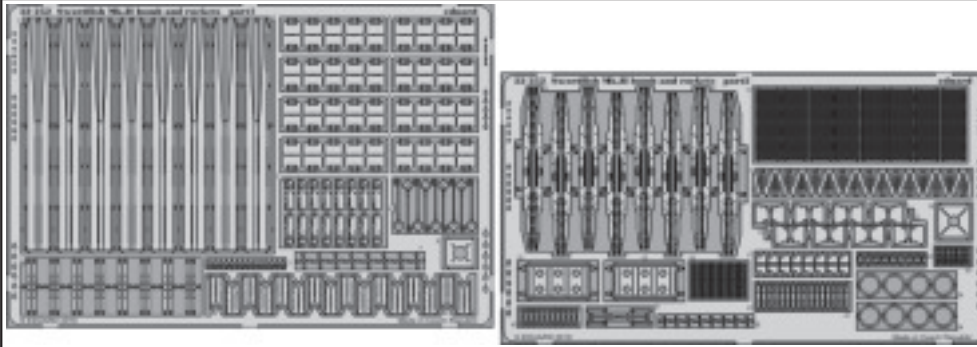


Swordfish Mk.II bomb and rockets

eduard

32 252

1/32 scale detail set for TRUMPETER kit • sada detailů pro model 1/32 TRUMPETER



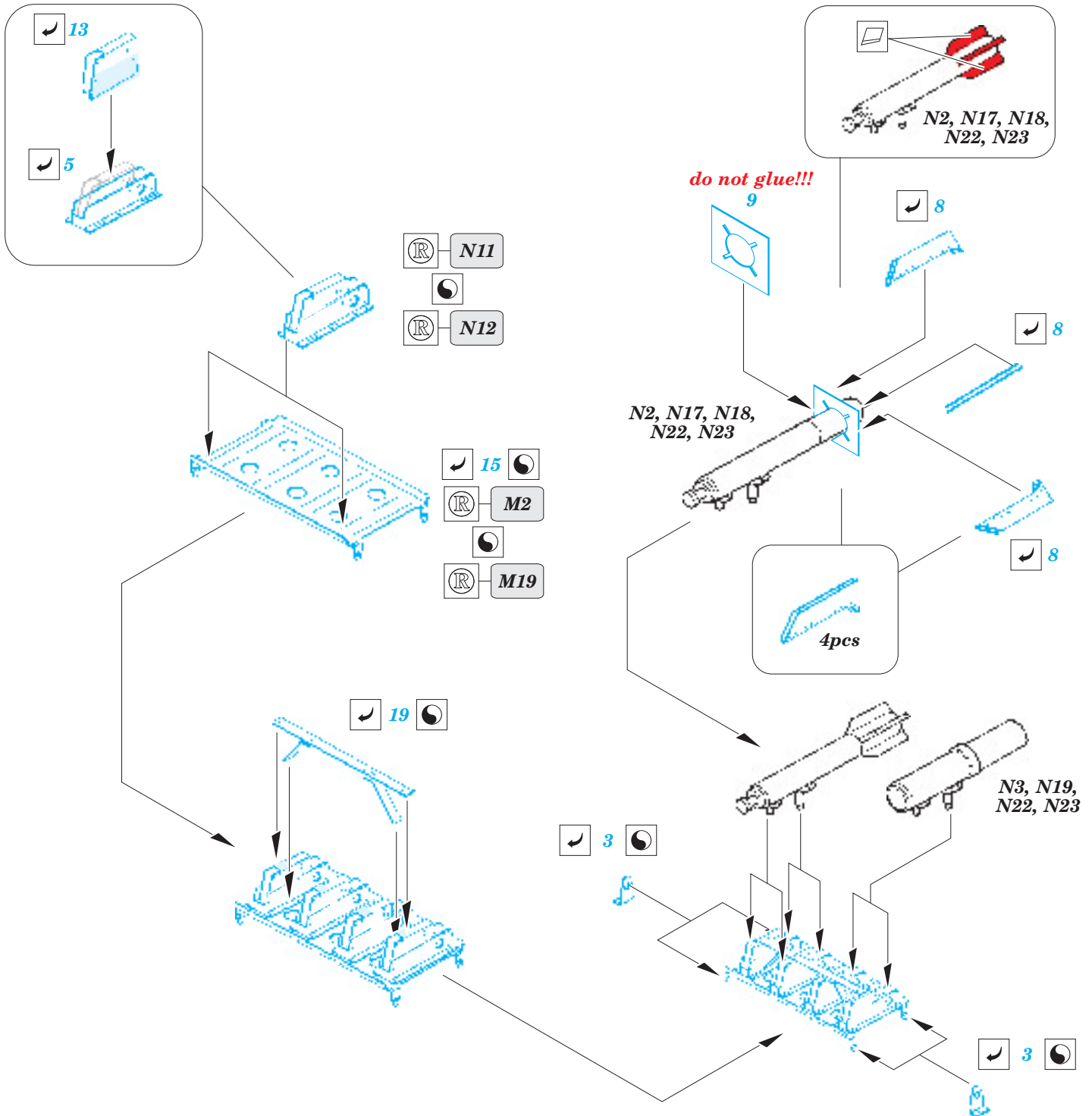
- APPLY EXPRESS MASK AND PAINT BEFORE GLUING
POUŽIT EXPRESS MASK NABARVIT PŘED SLEPENÍM
- SYMMETRICAL ASSEMBLY
SYMETRICKÁ MONTÁŽ
- REMOVE
ODSTRANIT
- GRIND
OBROUSIT
- DRILL HOLE
VRTAT OTVOR
- BEND
OHNOUT
- OPTION
VOLBA
- REPLACE
NAHRADIT

ORIGINAL KIT PARTS
PŮVODNÍ DÍLY STAVEBNICE

PHOTO-ETCHED PARTS
LEPTANÉ DÍLY

PARTS TO BE REMOVED
DÍLY K ODSTRANĚNÍ

FILL
TMELIT



do not glue!!!

14

12

4pcs

N9, N14
3pcs

N9, N14

12

24

11

N5

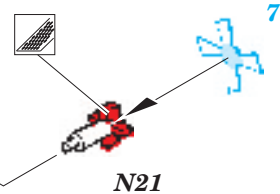
N9, N14



N20

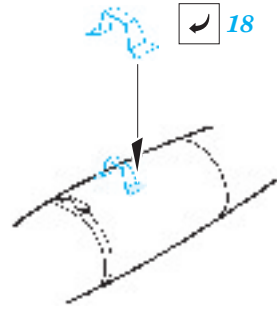
20

N6, N10, N15
3pcs



N21

7



18

N7

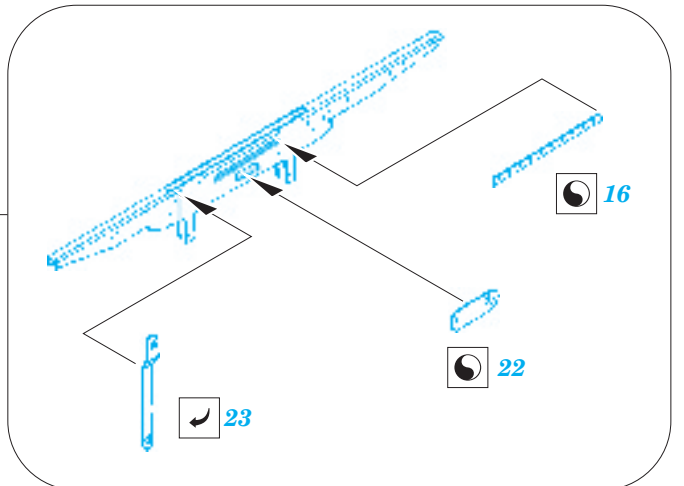
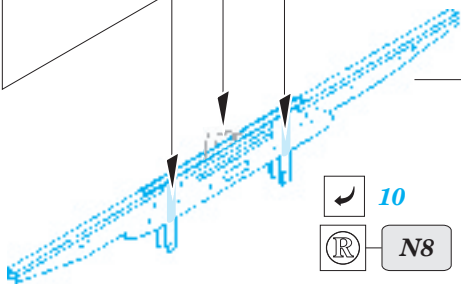
17

N16



10

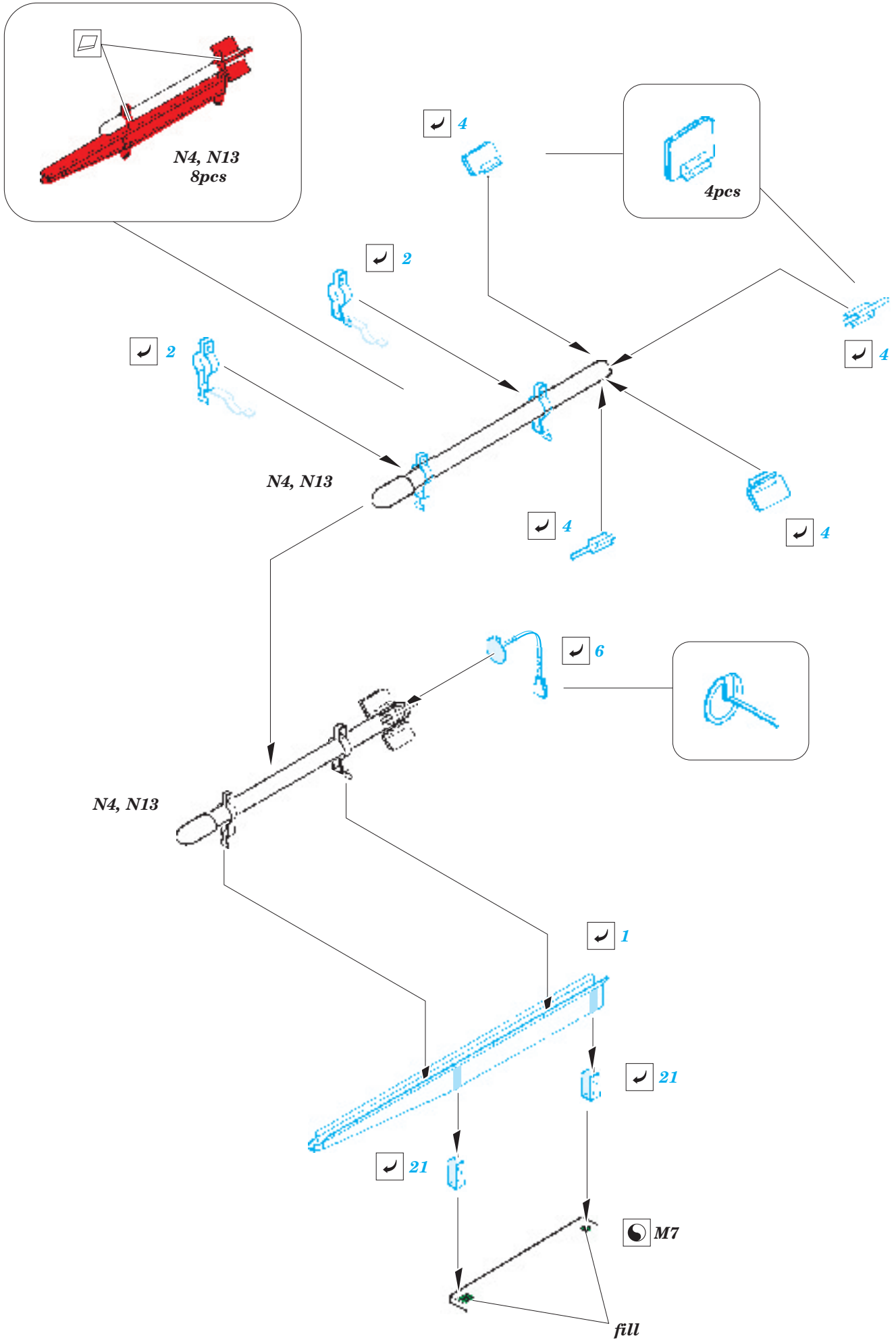
N8



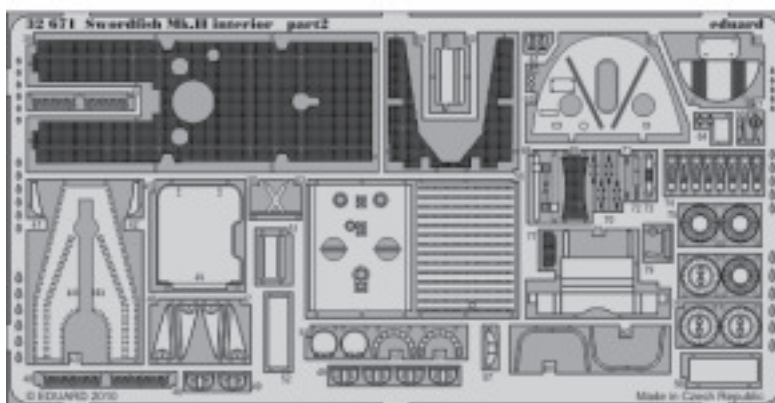
16

22

23



*For further detail sets look for **eduard** 32 671 Swordfish Mk.II interior S.A.
(not included in this set)*



*For further detail sets look for **eduard** 32 250 Swordfish Mk.II exterior
(not included in this set)*

