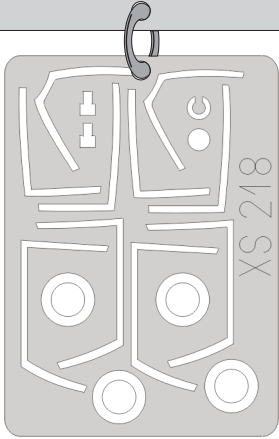


eduard
Express Mask

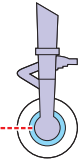
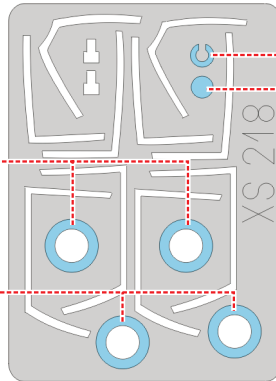
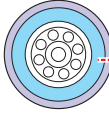
F-16B Fighting Falcon

The die-cut mask for accurate canopy frame painting of the
Hasegawa 1/72 KIT

XS 218

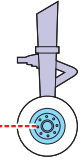
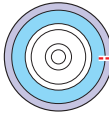


B12
2pcs.



C6

B12
2pcs.

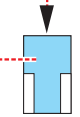
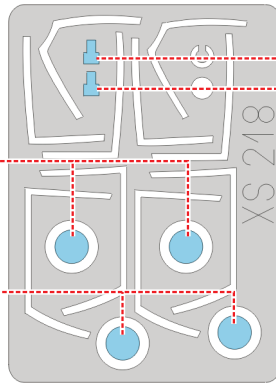
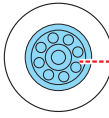


C6



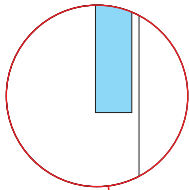
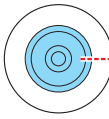
LIQUID MASK ■

B12
2pcs.

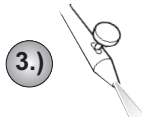
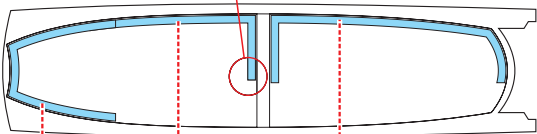


E2
2pcs.

B12
2pcs.



1.) E1

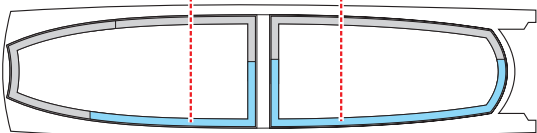


3.) INTERIOR COLOR

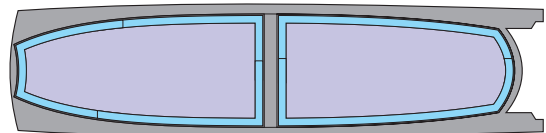


4.) RUBBER COLOR

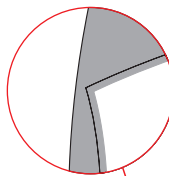
2.) E1



E1



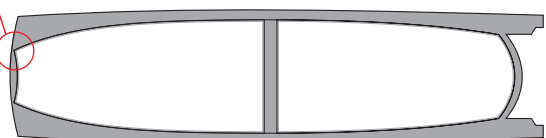
LIQUID MASK ■



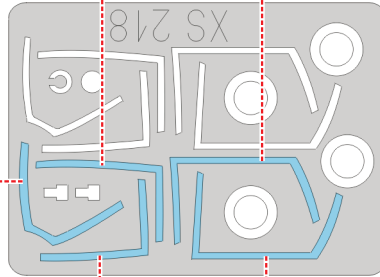
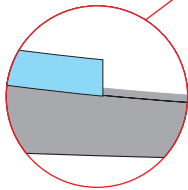
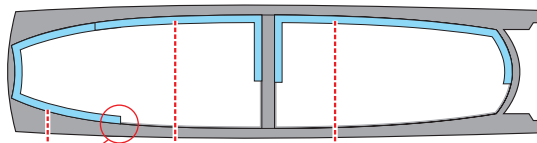
5.)

REMOVE MASK

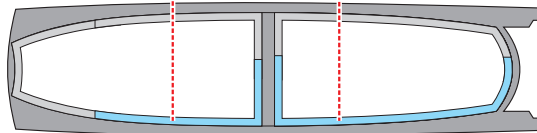
E1



6.)



7.)

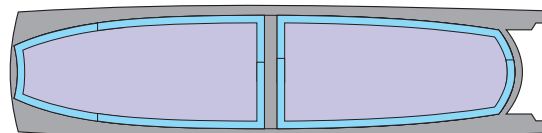


8.)



CAMOUFLAGE COLOR

E1



LIQUID MASK ■

9.)

REMOVE MASK

E1

