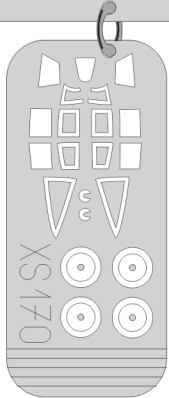


eduard
Express Mask

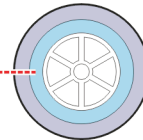
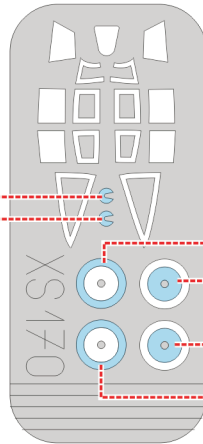
XS 170

NIKI-Ja Type 11 George

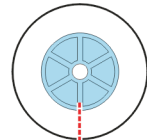
The die-cut mask for accurate canopy frame painting of the
Tamiya 1/72 KIT



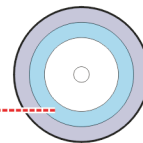
A 25



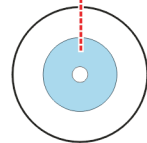
?



A 15



?



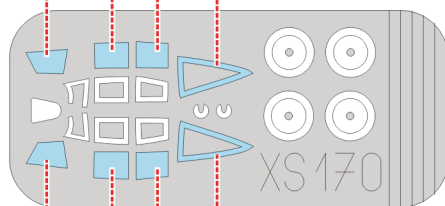
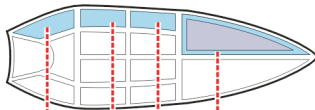
REFERENCES:

REPLIC #37/ 1994
MODEL ART # 587
KAWANISHI W BOJU
(Kristian Koseski)

 - LIQUID MASK

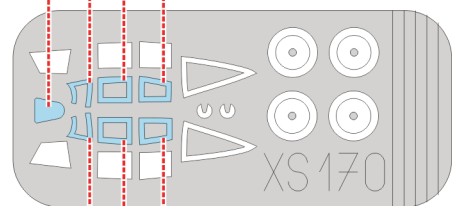
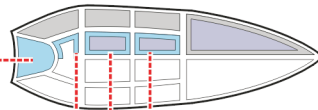
1.)

B 2



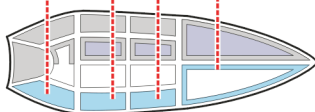
2.)

B 2



3.)

B 2



4.)

B 2

