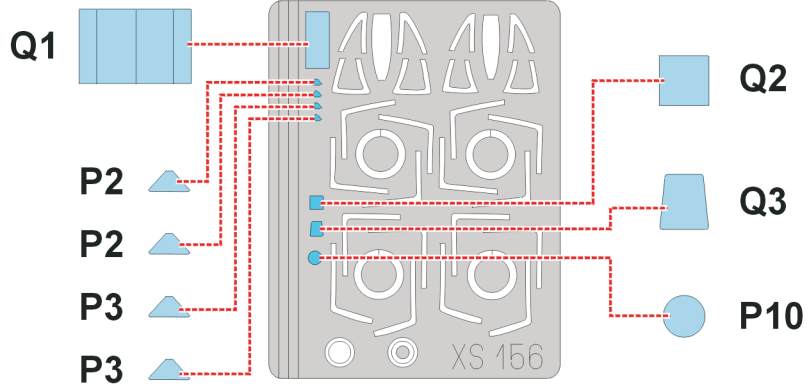
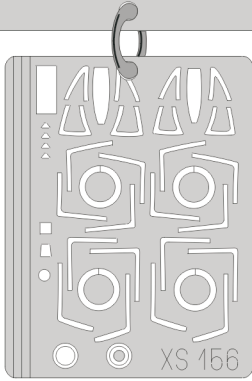


eduard
Express Mask

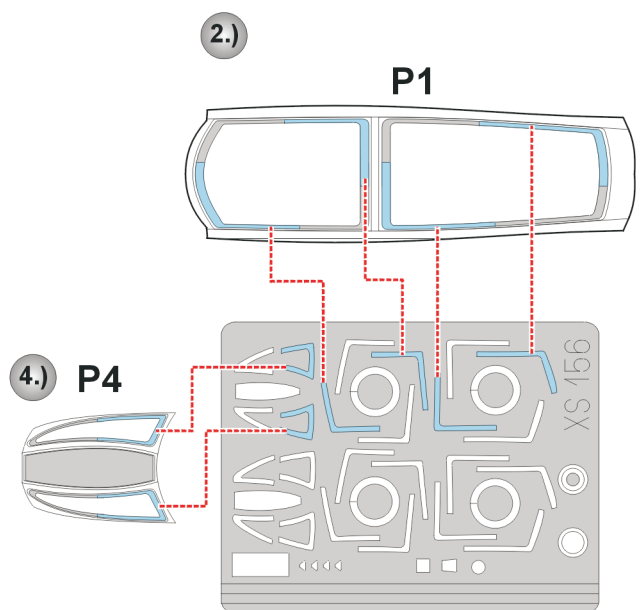
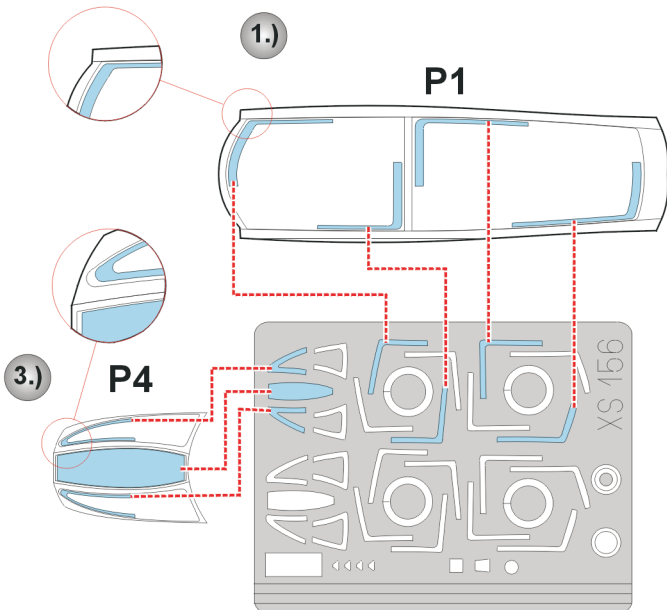
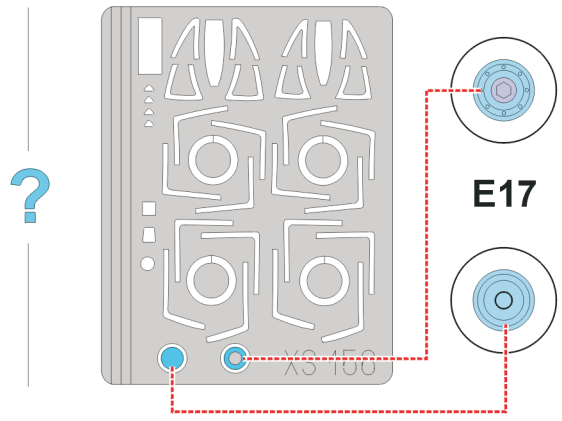
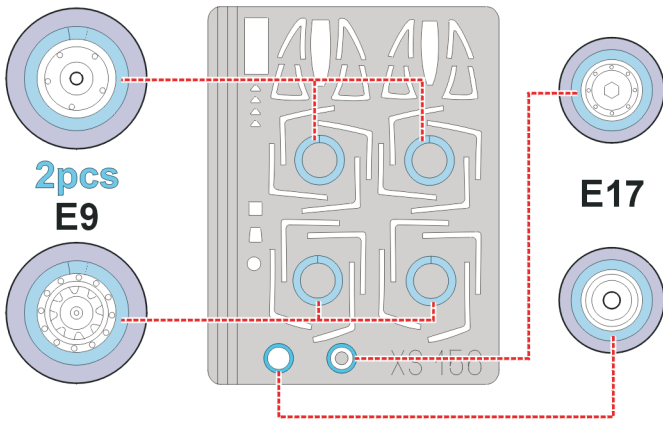
XS 156

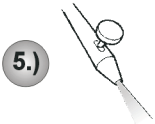
F-14 Tomcat

The die-cut mask for accurate canopy frame painting of the
Hasegawa 1/72 KIT



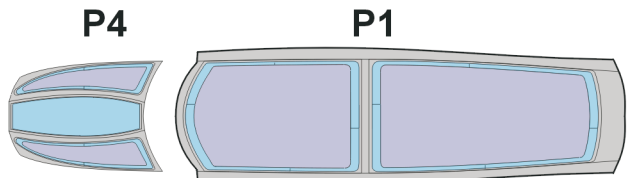
LIQUID MASK ■



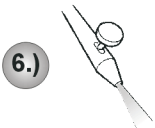


5.)

INTERIOR COLOR

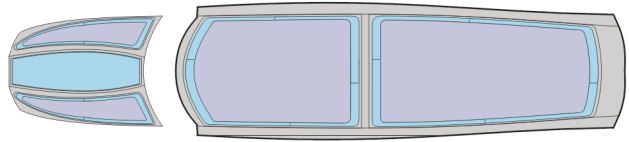


LIQUID MASK ■



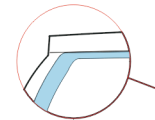
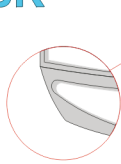
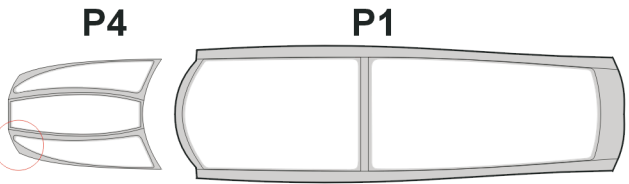
6.)

RUBBER COLOR



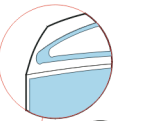
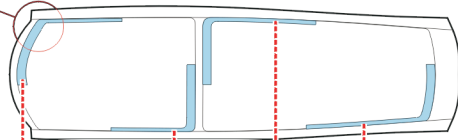
7.)

REMOVE MASK



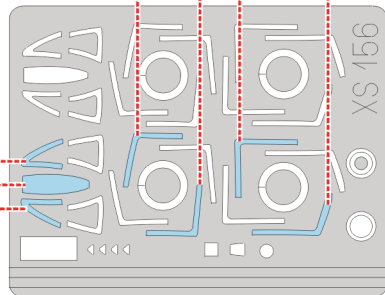
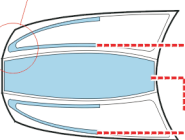
8.)

P1



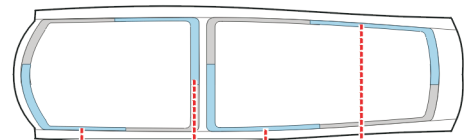
10.)

P4



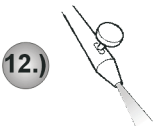
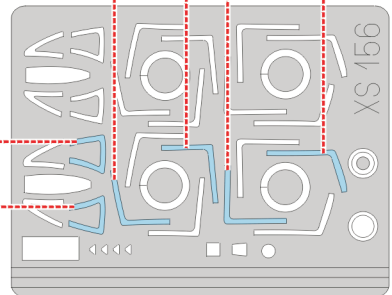
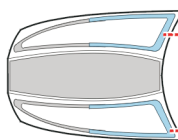
9.)

P1



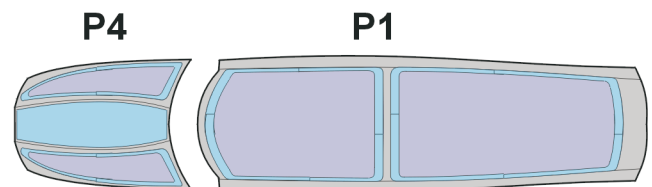
11.)

P4



12.)

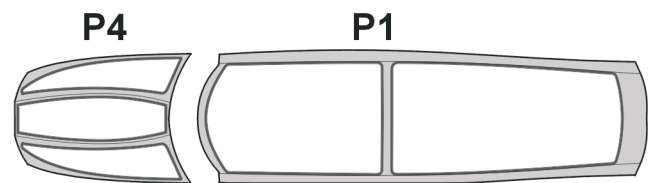
CAMOUFLAGE COLOR



LIQUID MASK ■

13.)

REMOVE MASK



REFERENCES: Squadron/Signal Publ.:Walk Around # 3 - F-14 Tomcat
Squadron/Signal Publ.:In Action # 105 - F-14 Tomcat