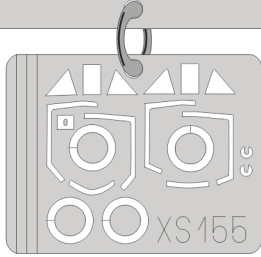


**eduard**  
**Express Mask**

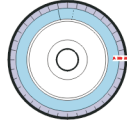
**XS 155**

# Fw - 190D

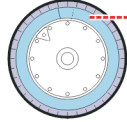
The die-cut mask for accurate canopy frame painting of the  
*Academy 1/72 KIT*



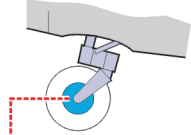
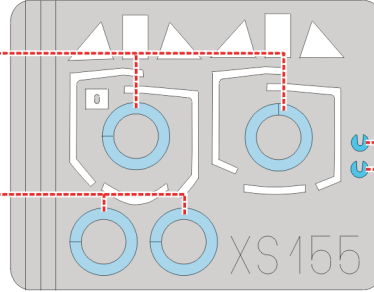
B9, B10



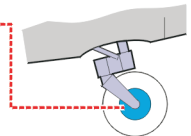
B9, B10



LIQUID MASK ■

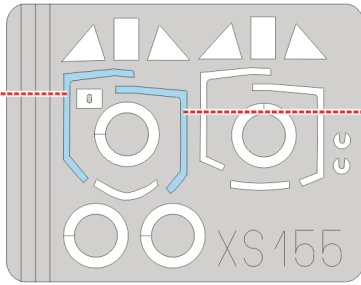
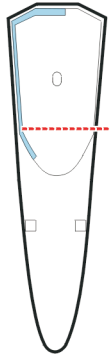


A2

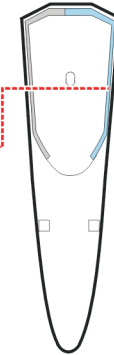


A2

1.) D1



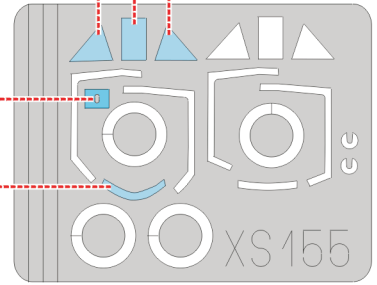
2.) D1



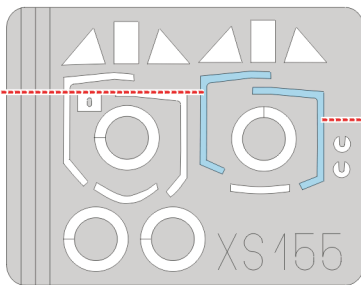
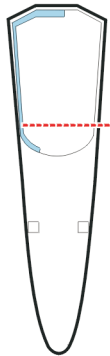
3.) D1



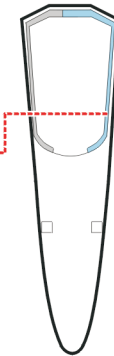
D2



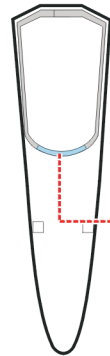
1.) E1



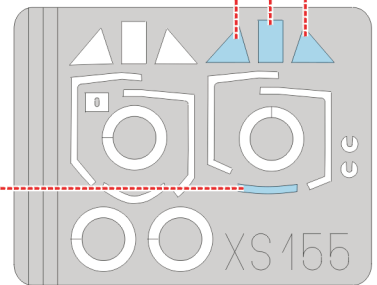
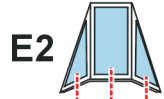
2.) E1



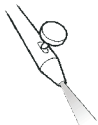
3.) E1



E2

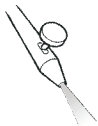


4.)



**INTERIOR COLOR**

5.)

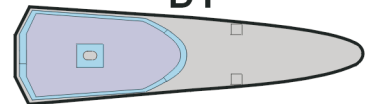


**CAMOUFLAGE COLOR**

D2



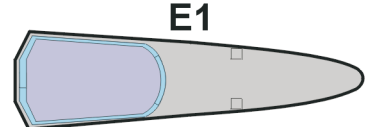
D1



E2



E1



LIQUID MASK ■

**REFERENCES:** Squadron/Signal Publ.:IN ACTION # 1019 - FW 190  
Squadron/Signal Publ.:Walk Around # 5510 - FW 190D  
Aero Detail 2: Focke-Wulf Fw190D