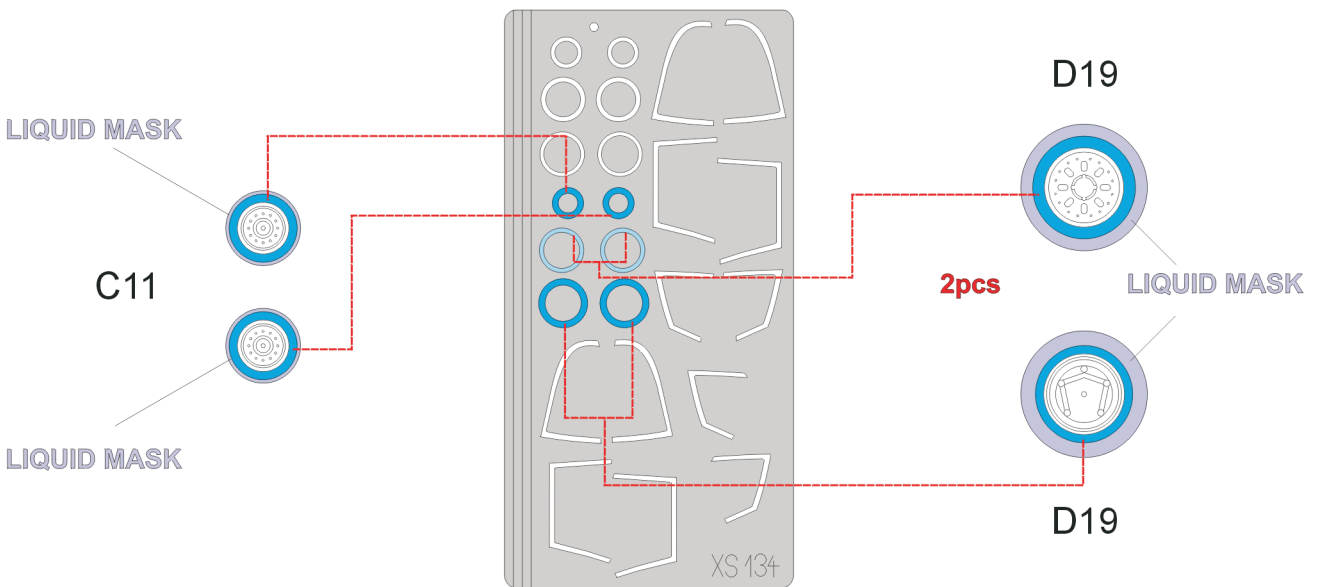
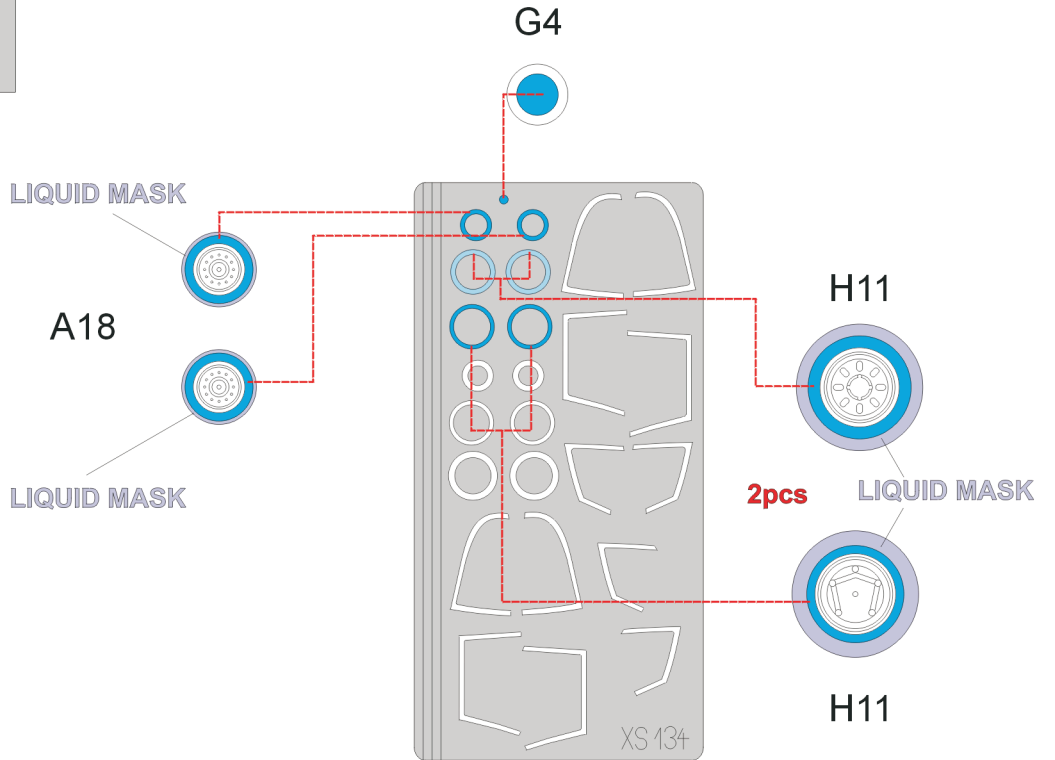
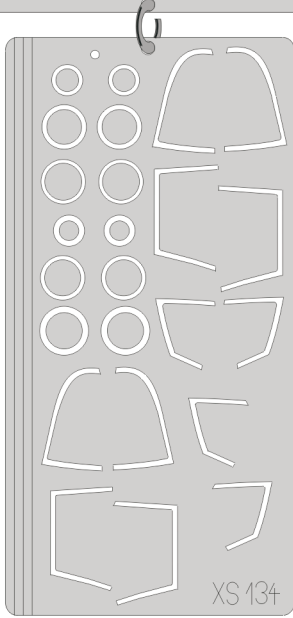


**eduard**  
**Express Mask**

**XS 134**

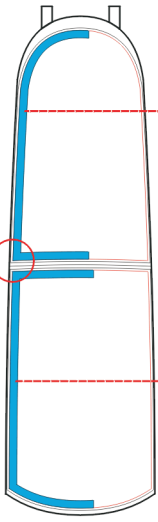
# F-15E Strike Eagle

The die-cut mask for accurate canopy frame painting of the  
*Hasegawa 1/72 KIT*

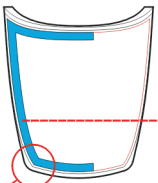


1.)

G2



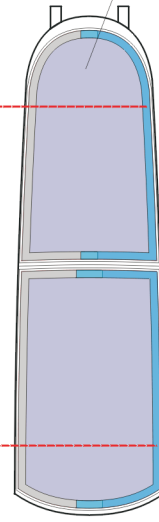
G1



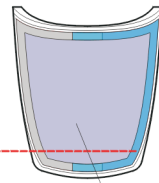
2.)

LIQUID MASK

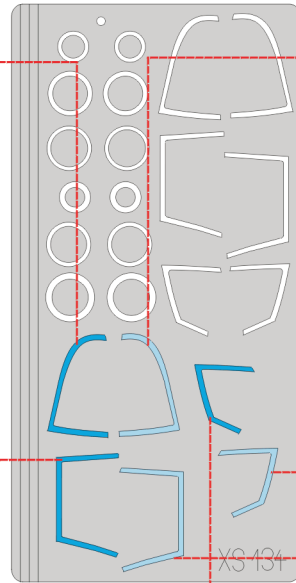
G2



G1



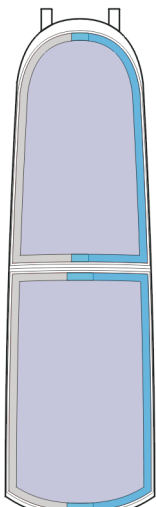
LIQUID MASK



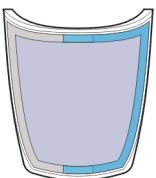
3.)

INTERIOR COLOR

G2



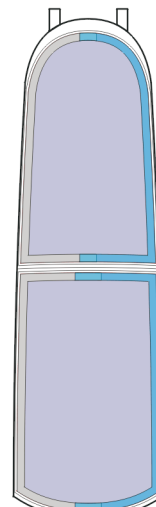
G1



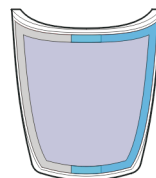
4.)

RUBBER COLOR

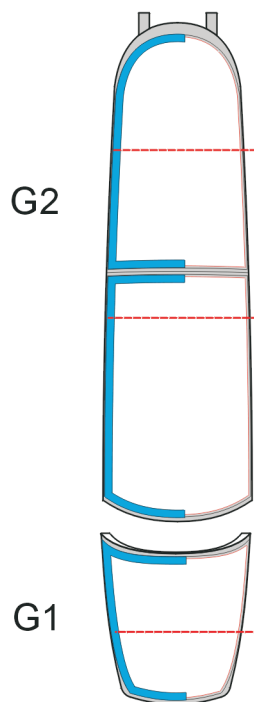
G2



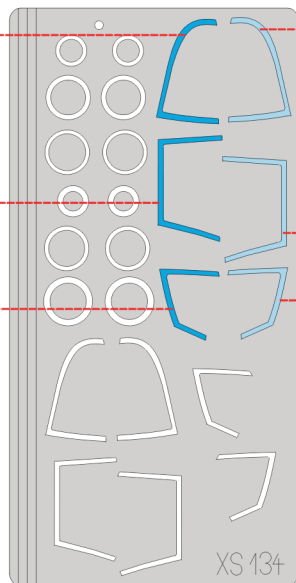
G1



5.)



6.)



LIQUID MASK

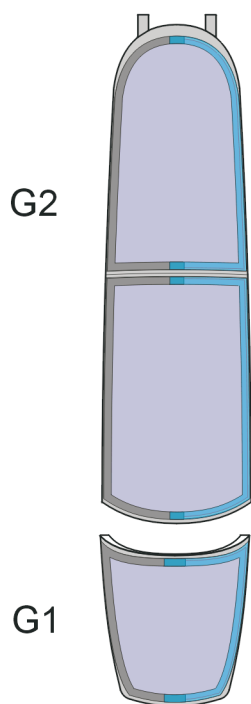
G2

G1

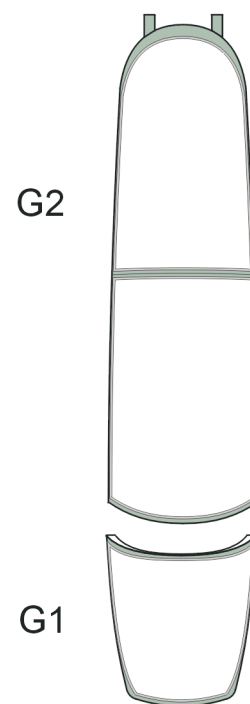
LIQUID MASK

7.)

CAMOUFLAGE COLOR



8.)



G2

G1