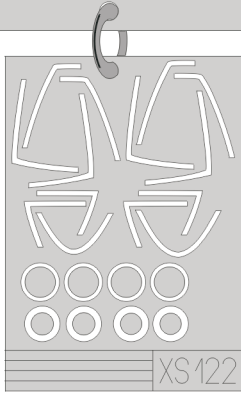


eduard
Express Mask

XS 122

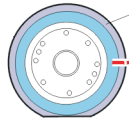
F/A-18 Hornet

The die-cut mask for accurate canopy frame painting of the
Fujimi 1/72 KIT

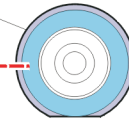
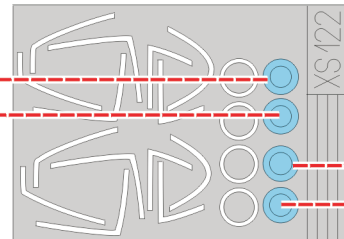
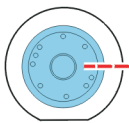


LIQUID MASK

2 pcs.
A30



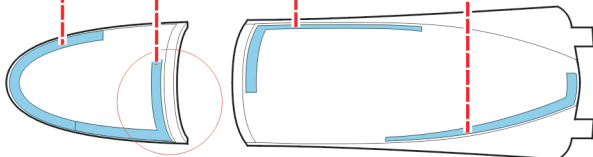
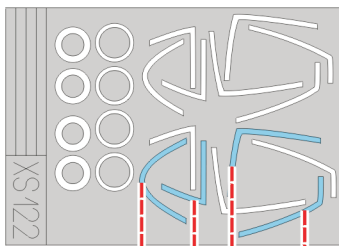
2 pcs.
A30



2 pcs.
A30

2 pcs.
A30

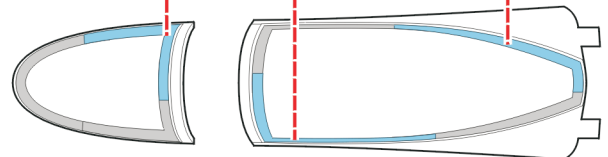
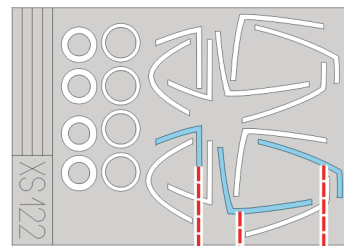
1.)



G5

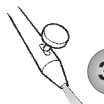
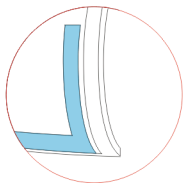
G6, B58

2.)



G5

G6, B58



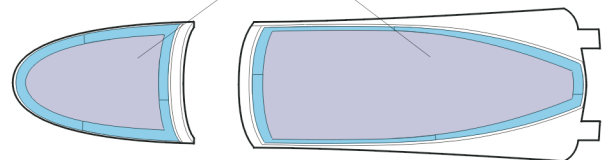
3.) INTERIOR COLOR



4.) RUBBER COLOR

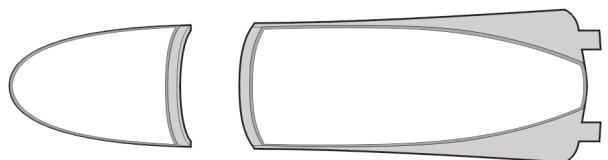
LIQUID MASK

5.) REMOVE MASK



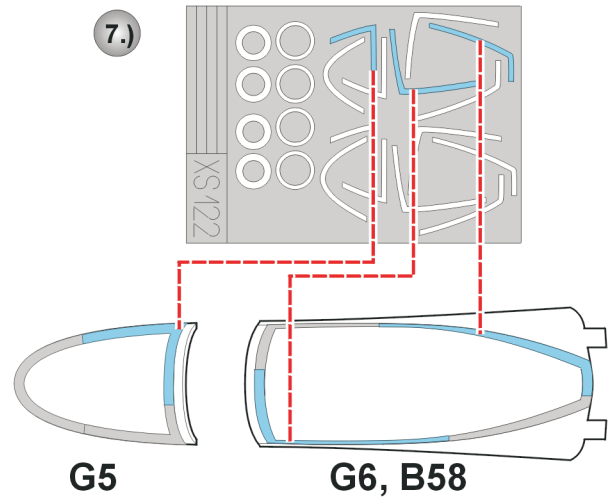
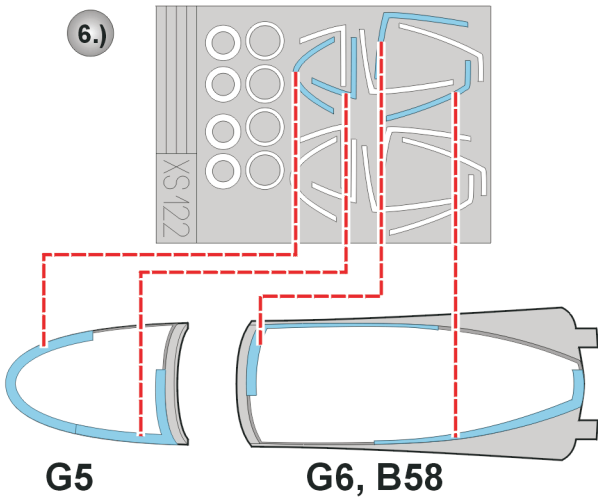
G5

G6, B58



G5

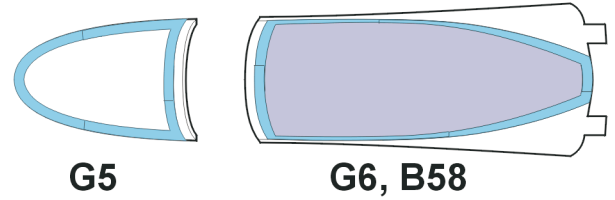
G6, B58



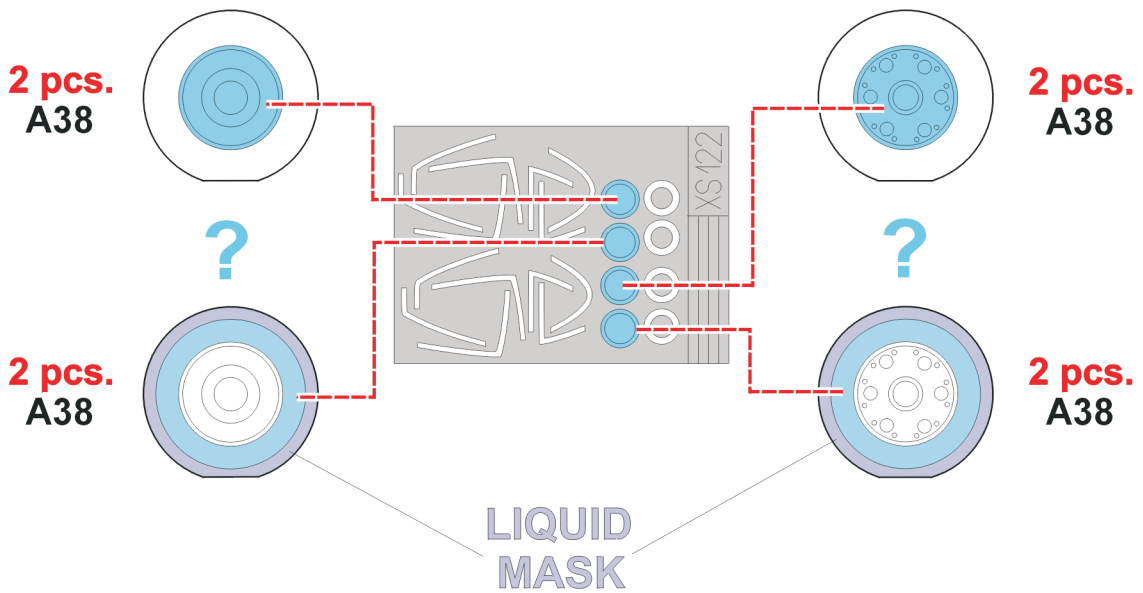
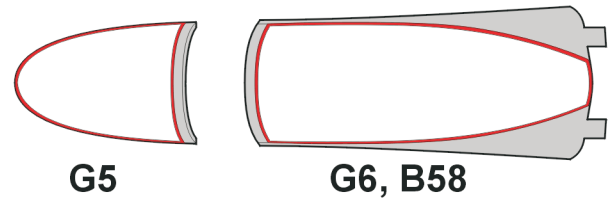
LIQUID MASK



8.) CAMOUFLAGE COLOR



9.) REMOVE MASK



REFERENCES: Sqadron/Signal Publ.:Walk Around # 18 - F/A-18 Hornet