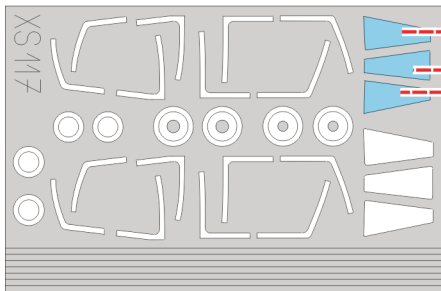
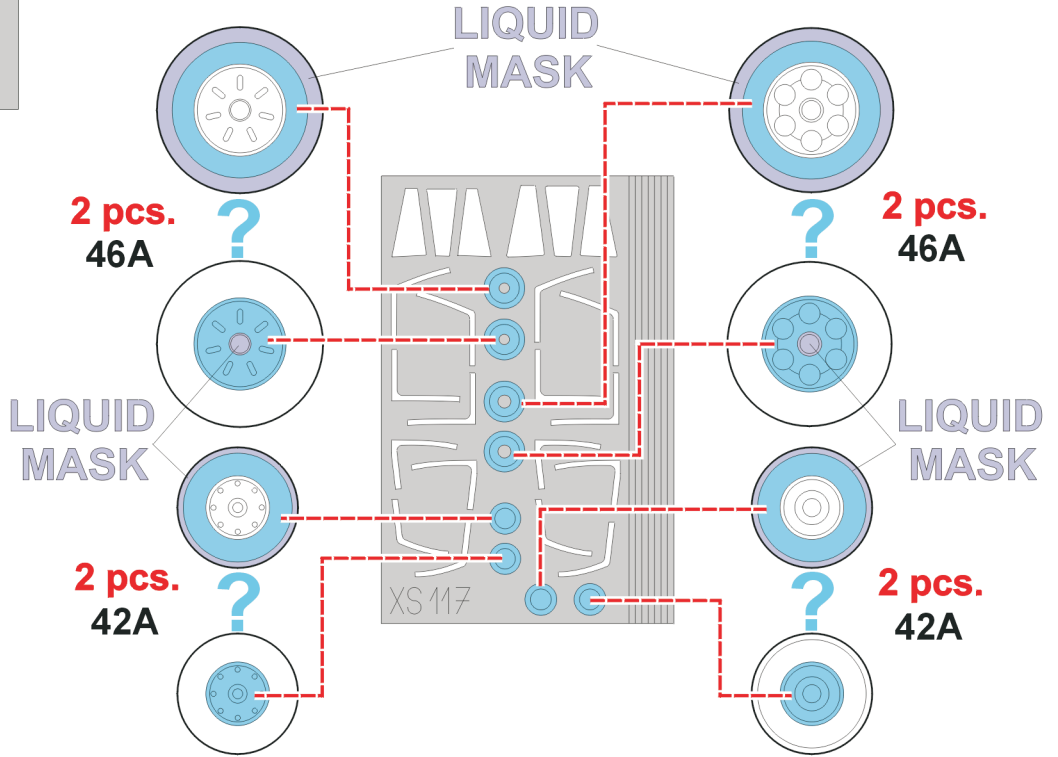
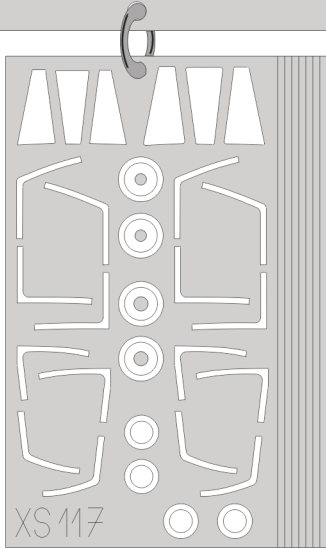


**eduard**  
**Express Mask**

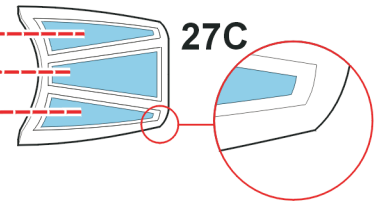
**XS 117**

# Tornado F.3

The die-cut mask for accurate canopy frame painting of the  
*Italeri 1/72 KIT*

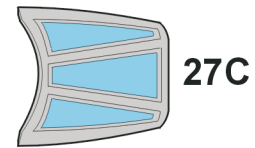


1.)



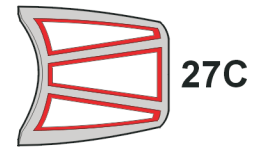
27C

2.) INTERIOR COLOR



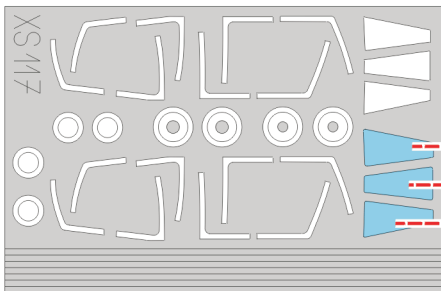
27C

3.) RUBBER COLOR

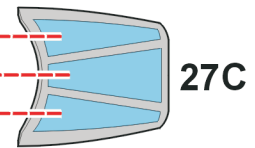


27C

4.) REMOVE MASK

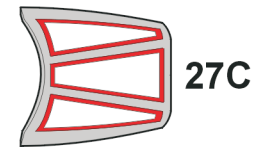


5.)



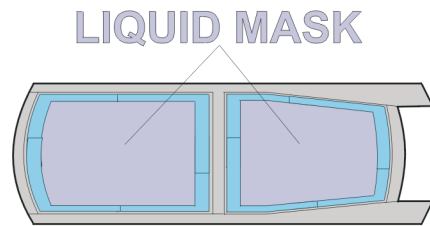
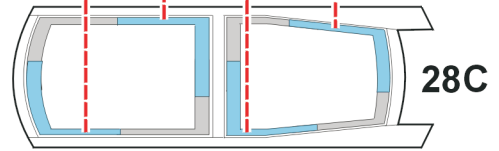
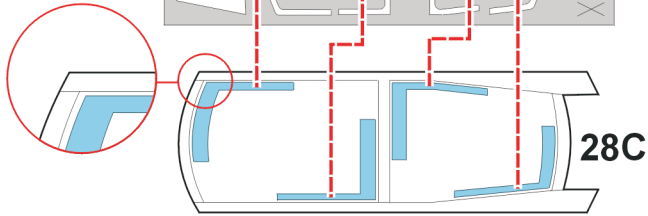
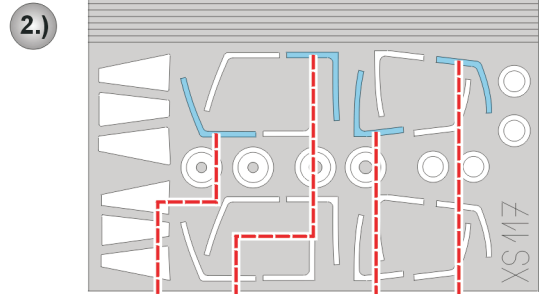
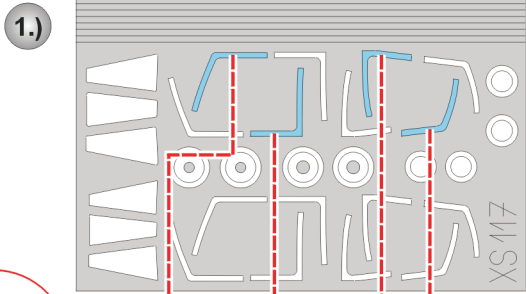
27C

6.) CAMOUFLAGE COLOR

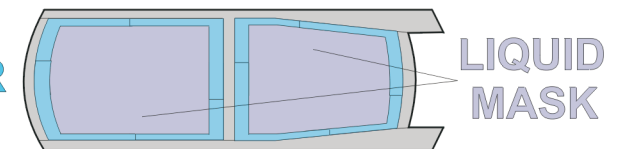
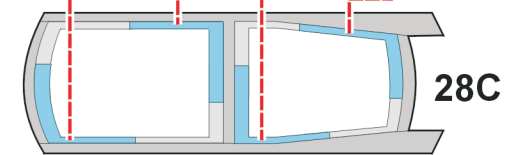
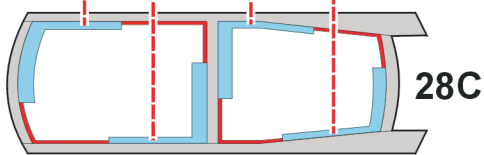
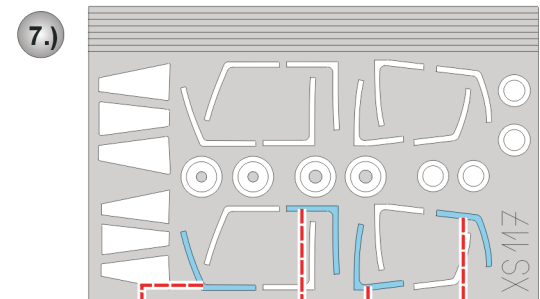
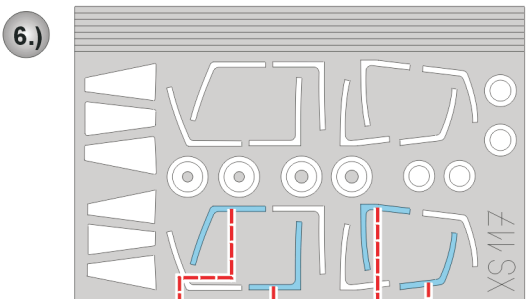
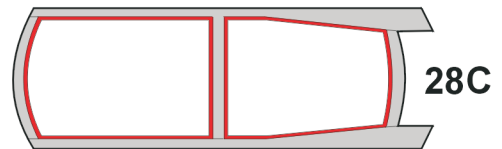


27C

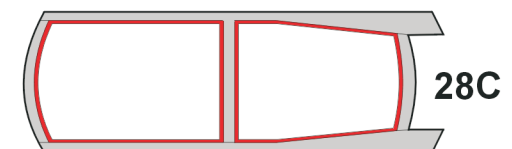
7.) REMOVE MASK



5.) REMOVE MASK



9.) REMOVE MASK



**REFERENCES:** - World Air Power Journal(No.31 Winter 1997)  
 - Aeroguide 21:Tornado ADV  
 - Zlínk No.4  
 - Przekład konstrukcji lotniczych 4/92:Tornado IDS