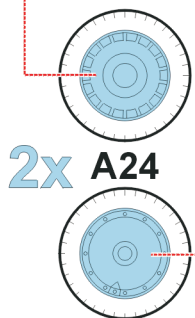
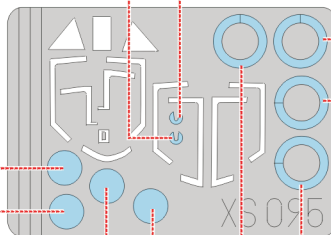
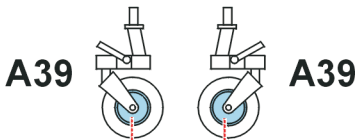
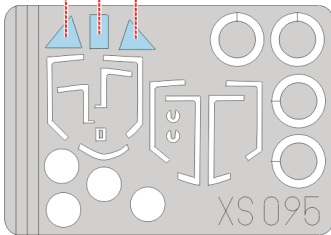
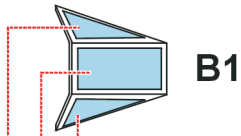


**eduard**  
**Express Mask**

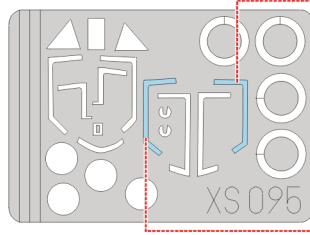
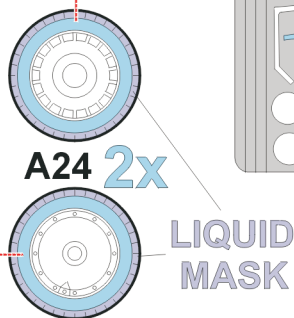
**XS 095**

# Fw-190D

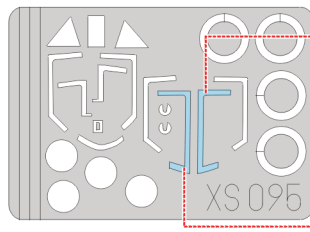
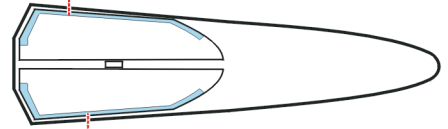
The die-cut mask for accurate canopy frame painting of the  
*Tamiya 1/72 KIT*



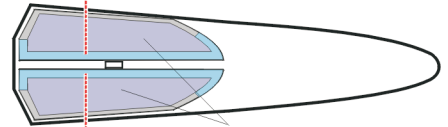
?



1.) B2



2.) B2



LIQUID MASK

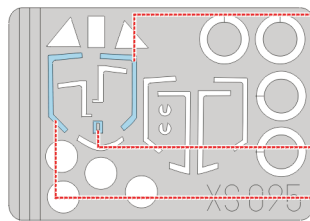


INTERIOR COLOR

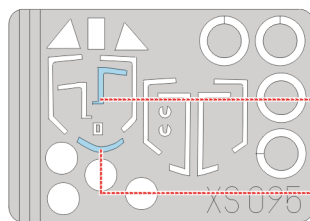
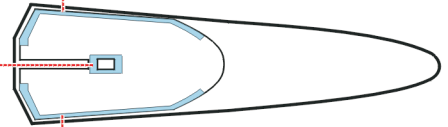
3.) B2

CAMOUFLAGE COLOR

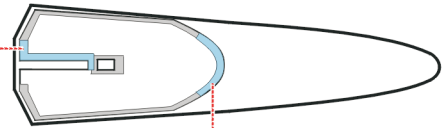
4.) B2



1.) B3



2.) B3



3.) B3

LIQUID MASK



INTERIOR COLOR

4.) B3

CAMOUFLAGE COLOR

5.) B3

**REFERENCES:**

Squadron/Signal Publ.:IN ACTION # 1019 - FW 190  
Squadron/Signal Publ.:Walk Around # 5510 - FW 190D  
Aero Detail 2: Focke-Wulf Fw190D