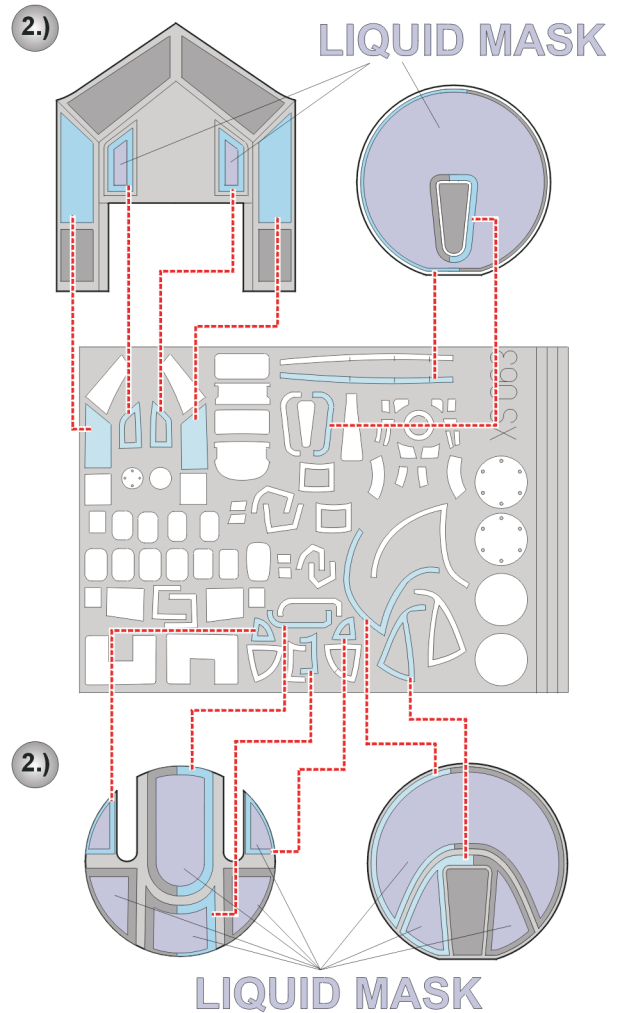
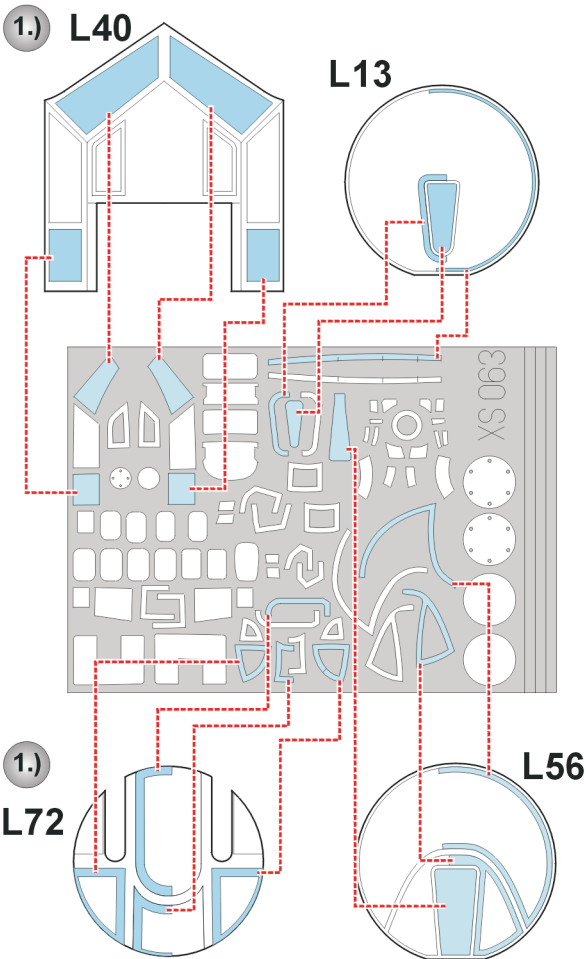
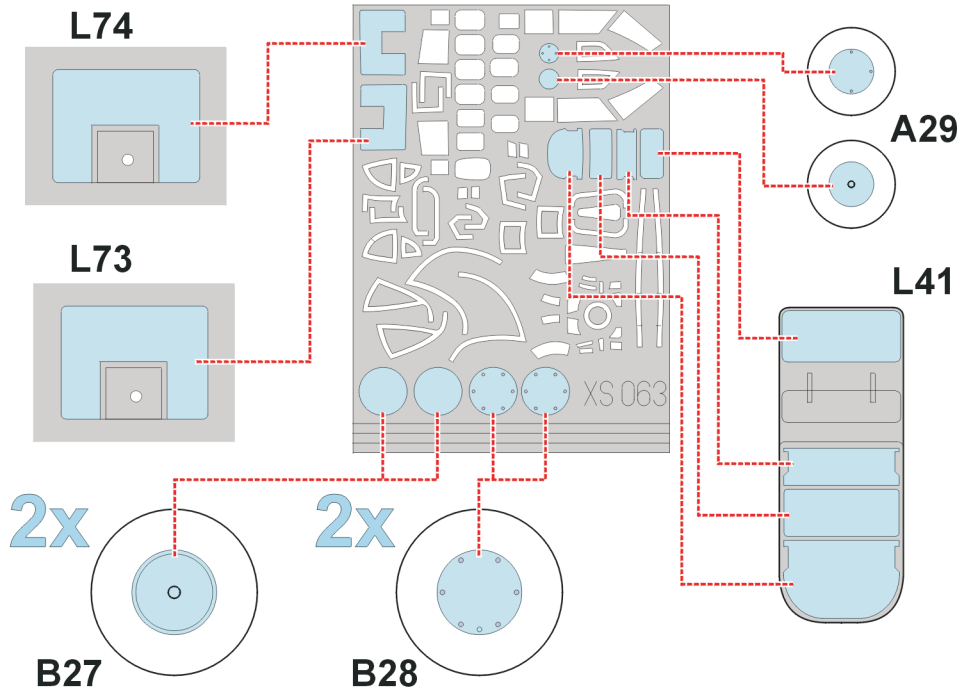


**eduard**  
**Express Mask**

**XS 063**

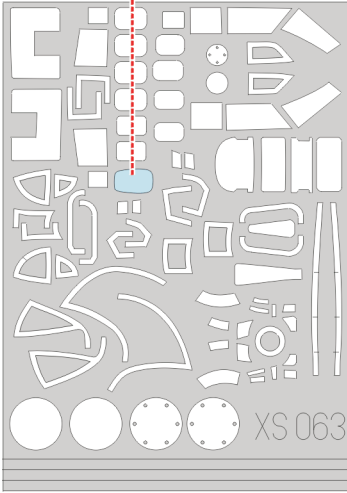
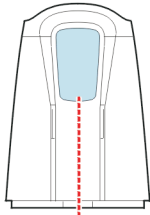
# B-17 G/F Flying Fortress

The die-cut mask for accurate canopy frame painting of the  
*Academy 1/72 KIT*



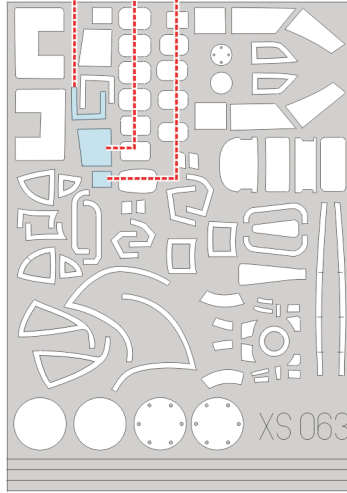
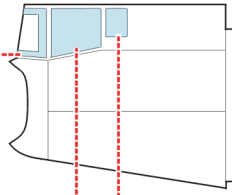
1.)

L68  
+  
L69



2.)

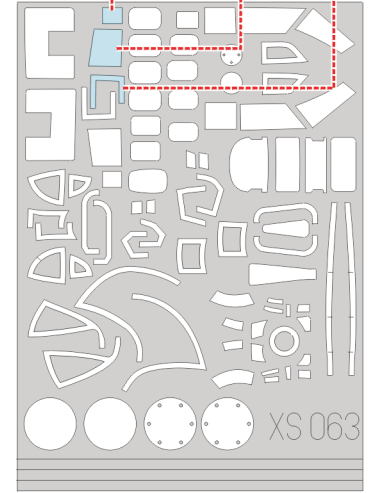
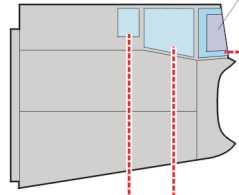
L68  
+  
L69



3.)

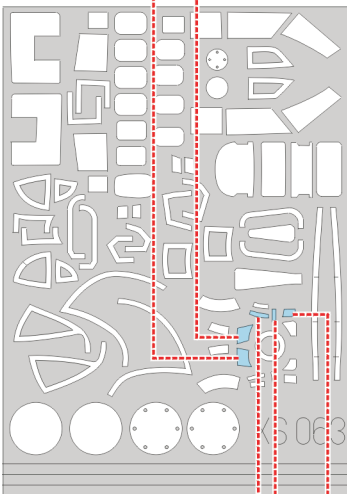
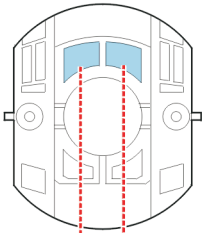
L68  
+  
L69

LIQUID MASK



1.)

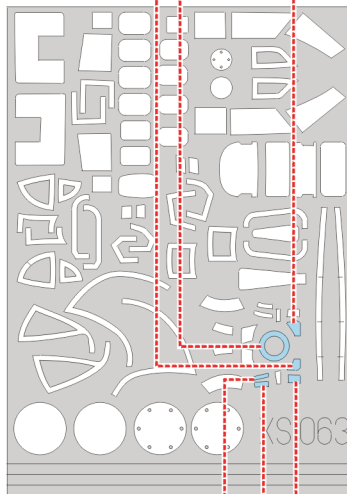
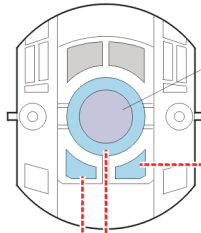
L42  
+  
L43



2.)

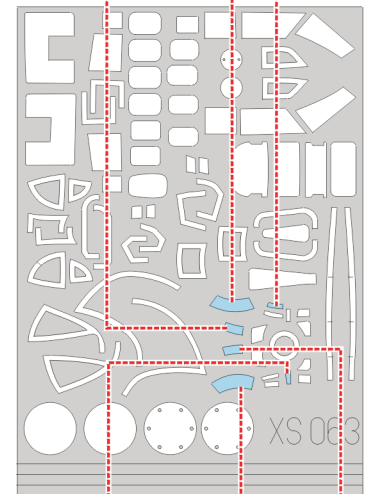
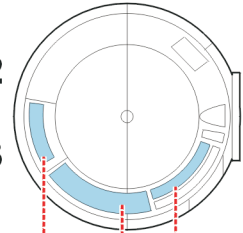
L42  
+  
L43

LIQUID MASK



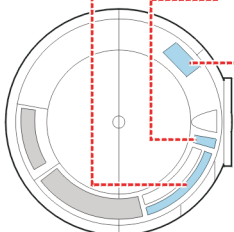
3.)

L42  
+  
L43



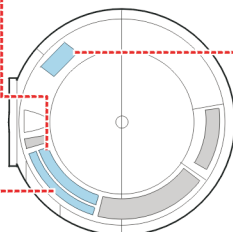
4.)

L42  
+  
L43



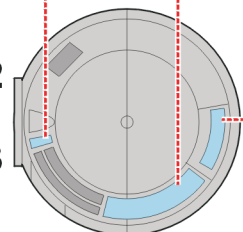
5.)

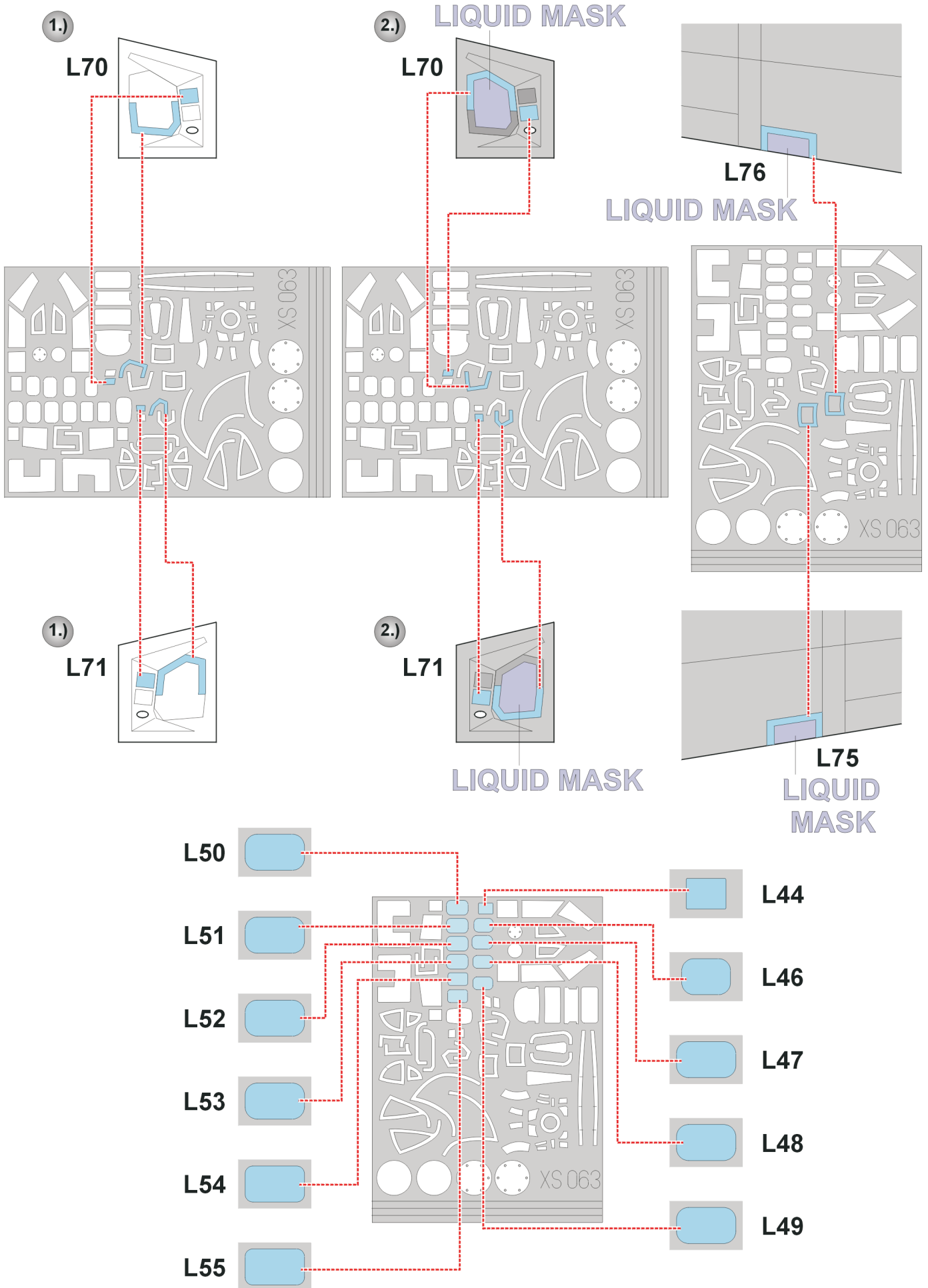
L42  
+  
L43



6.)

L42  
+  
L43





**REFERENCES:** Aero Detail #19 - BOEING B-17G Flying Fortress  
 Squadron/Signal Publ.: Walk Around # 5516 - B-17 Flying Fortress