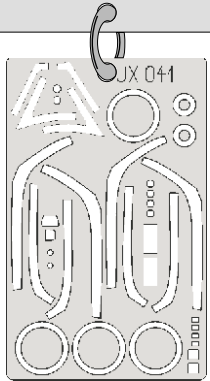


# eduard MASK

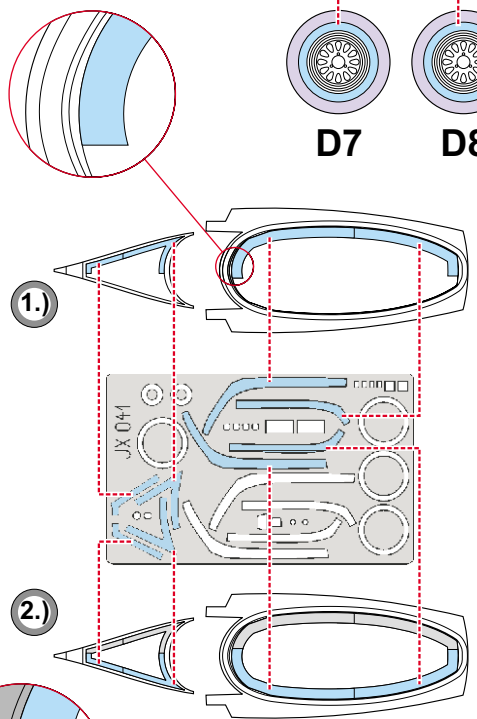
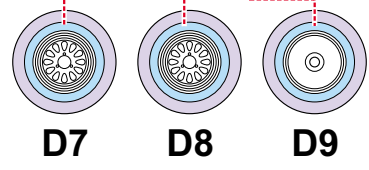
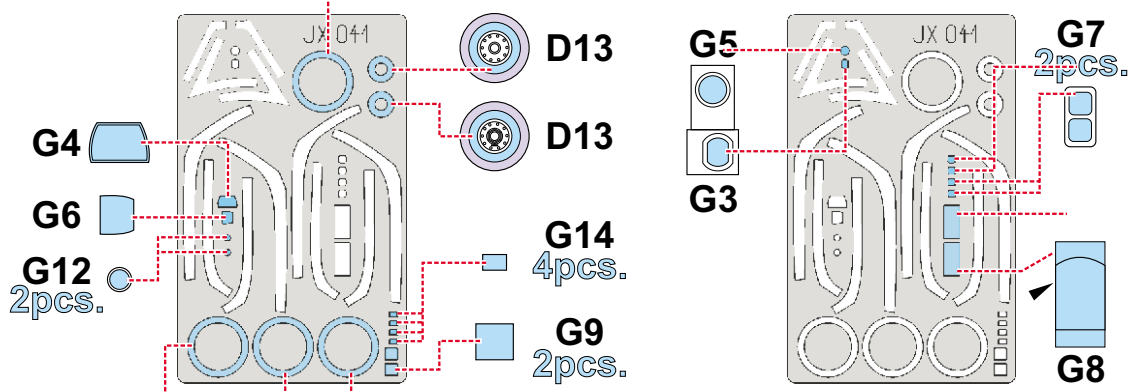
## F-16CJ Fighting Falcon 1/32

The die-cut mask for accurate canopy frame painting of the  
*Academy 12101* scale 1/32

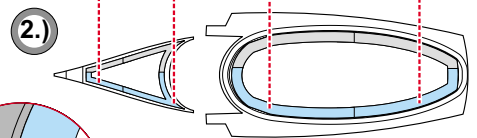
### JX 041



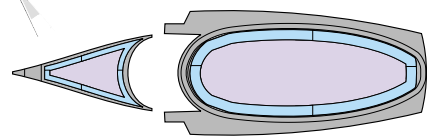
D10 LIQUID MASK



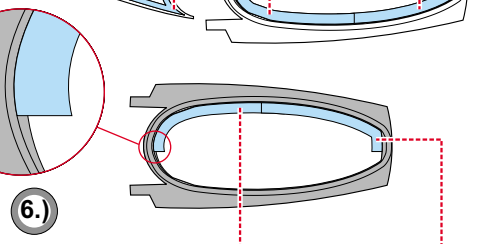
3.) INTERIOR COLOR



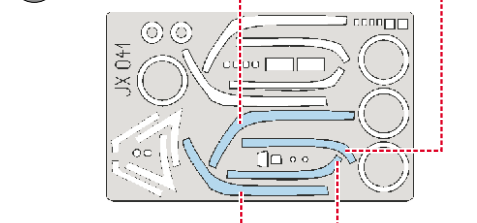
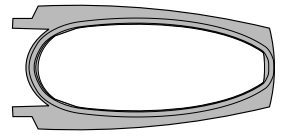
4.) RUBBER COLOR



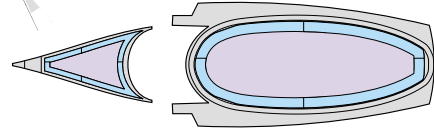
LIQUID MASK



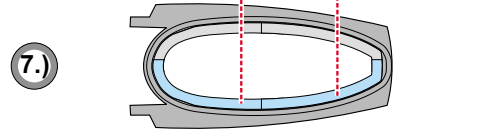
5.) REMOVE MASK



8.) CAMOUFLAGE COLOR



LIQUID MASK



9.) REMOVE MASK

