

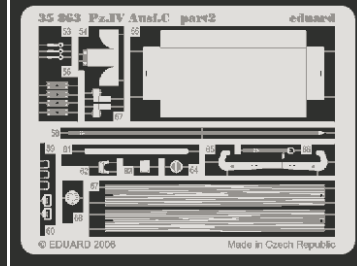
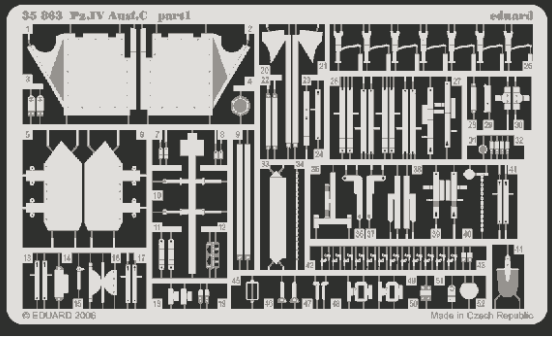


Pz.IV Ausf.C

eduard

1/35 scale detail set for **TRISTAR** kit • sada detailů pro model 1/35 **TRISTAR**

35 863



- | | | | |
|--|--|--|---------------------|
| | APPLY EXPRESS MASK AND PAINT BEFORE GLUING
POUŽIT EXPRESS MASK NABARVIT PŘED SLEPENÍM | | BEND
OHNOUT |
| | SYMMETRICAL ASSEMBLY
SYMETRICKÁ MONTÁŽ | | OPTION
VOLBA |
| | REMOVE
ODSTRANIT | | REPLACE
NAHRADIT |
| | GRIND
OBROUSIT | | |
| | DRILL HOLE
VRTAT OTVOR | | |

ORIGINAL KIT PARTS
PŮVODNÍ DÍLY STAVEBNICE

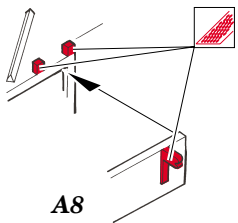
PHOTO-ETCHED PARTS
LEPTANÉ DÍLY

PARTS TO BE REMOVED
DÍLY K ODSTRANĚNÍ

FILL
TMELIT

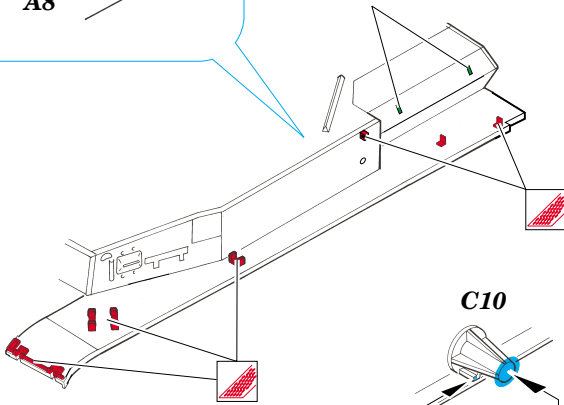
REFERENCES:

ACHTUNG PANZER No.1.....Panzerkampfwagen IV
MOTORBUCHVERLAG.....Begleitwagen Panzerkampfwagen IV

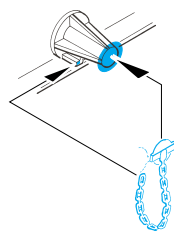


A8

filler

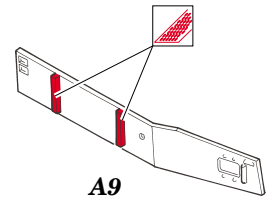


C10

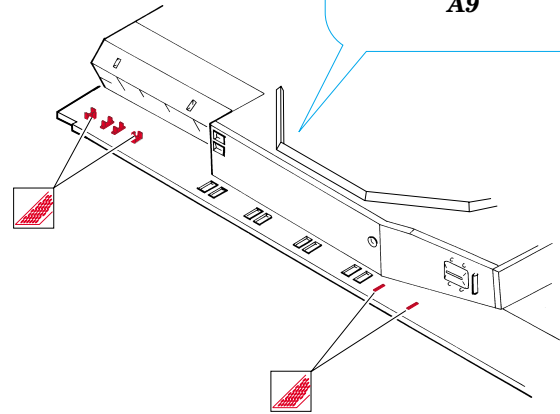


40

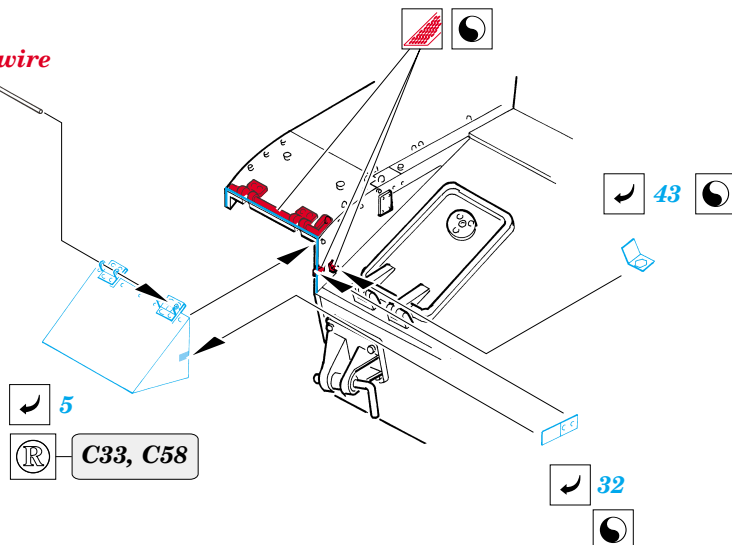
C30



A9



wire



5

C33, C58

32

68

D1, D2

plastic
 $\varnothing 2,6 \times 1,2 \text{mm}$

11,0mm

wire
 $\varnothing 0,4 \times 15,0 \text{mm}$

6

C32, C57

