

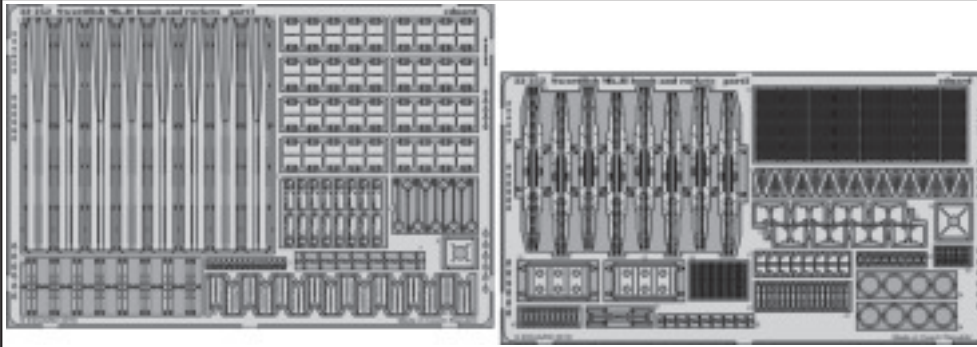


# Swordfish Mk.II bomb and rockets

eduard

32 252

1/32 scale detail set for TRUMPETER kit • sada detailů pro model 1/32 TRUMPETER



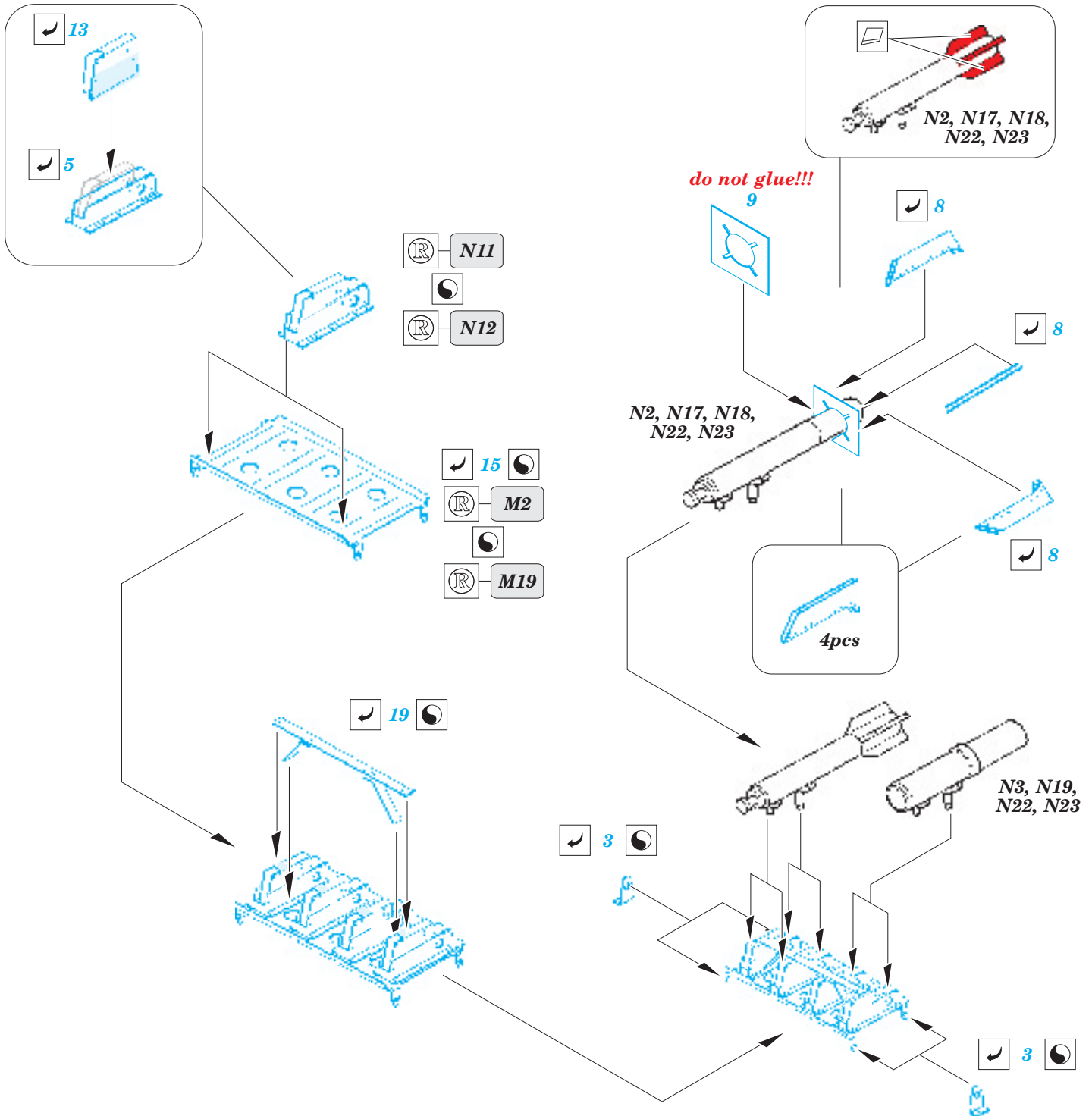
- ★ APPLY EXPRESS MASK AND PAINT BEFORE GLUING  
POUŽIT EXPRESS MASK NABARVIT PŘED SLEPENÍM
- ☉ SYMMETRICAL ASSEMBLY  
SYMETRICKÁ MONTÁŽ
- REMOVE  
ODSTRANIT
- ▨ GRIND  
OBROUSIT
- ⊘ DRILL HOLE  
VRTAT OTVOR
- ↪ BEND  
OHNOUT
- ? OPTION  
VOLBA
- Ⓜ REPLACE  
NAHRADIT

■ ORIGINAL KIT PARTS  
PŮVODNÍ DÍLY STAVEBNICE

■ PHOTO-ETCHED PARTS  
LEPTANÉ DÍLY

■ PARTS TO BE REMOVED  
DÍLY K ODSTRANĚNÍ

■ FILL  
TMELIT



do not glue!!!

14

12

4pcs

N9, N14  
3pcs

N9, N14

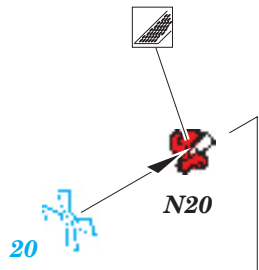
12

24

11

N5

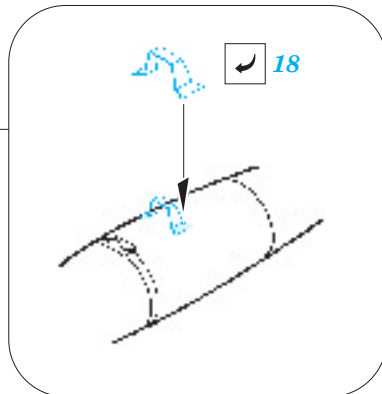
N9, N14



N6, N10, N15  
3pcs

N21

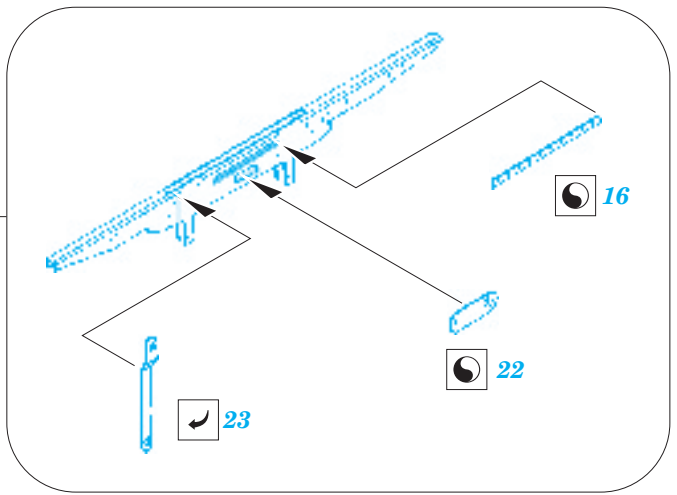
7



N16

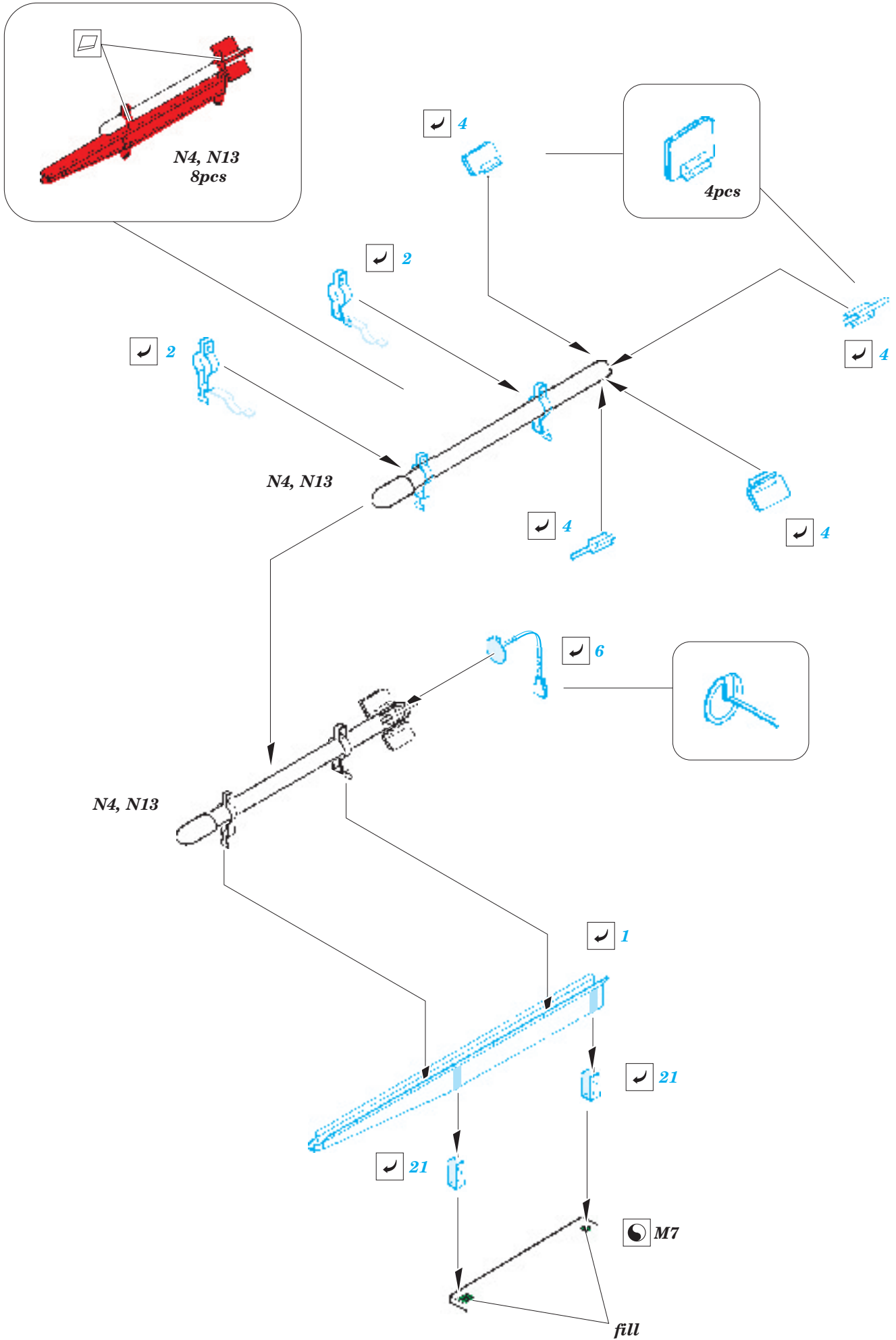
N7

17

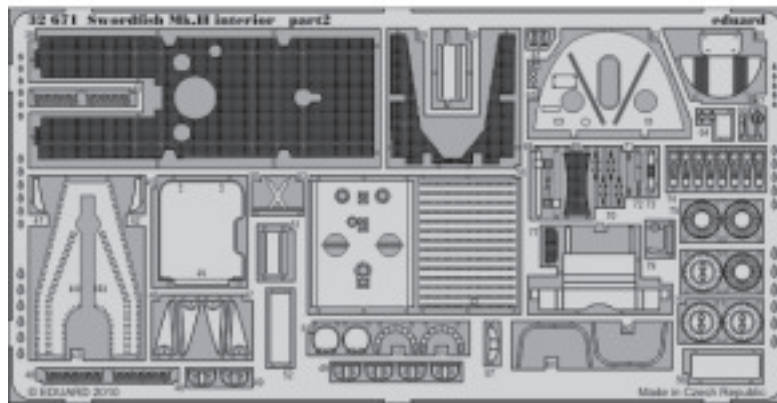


10

N8



*For further detail sets look for **eduard** 32 671 Swordfish Mk.II interior S.A.  
(not included in this set)*



*For further detail sets look for **eduard** 32 250 Swordfish Mk.II exterior  
(not included in this set)*

