

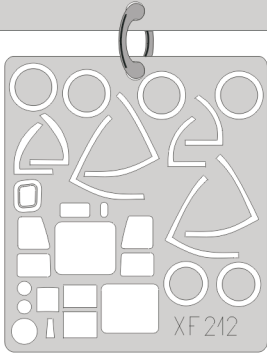
eduard
Express Mask

Ar-234C Blitz

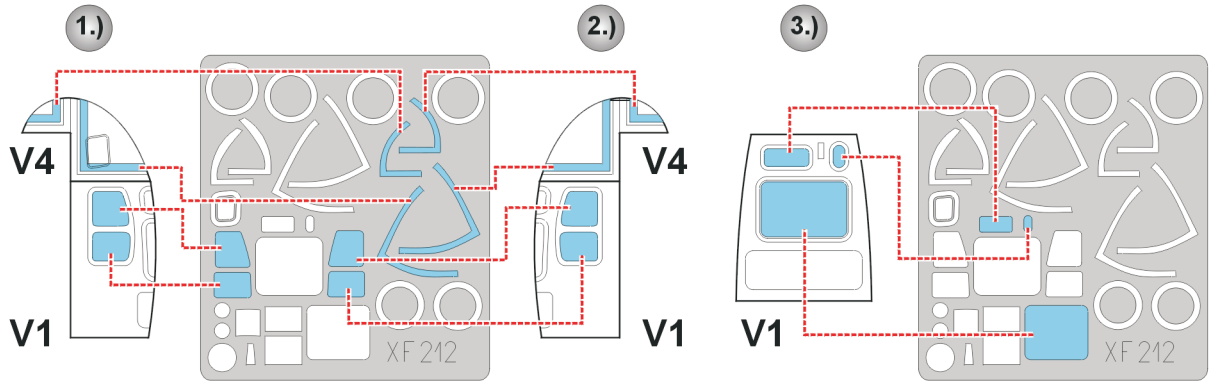
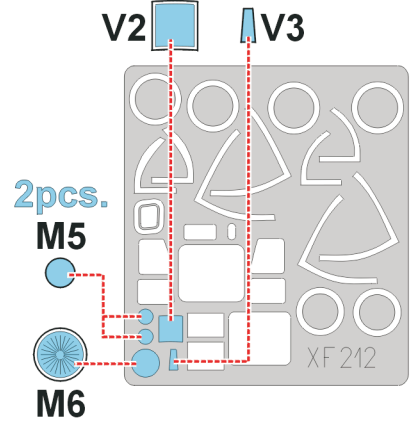
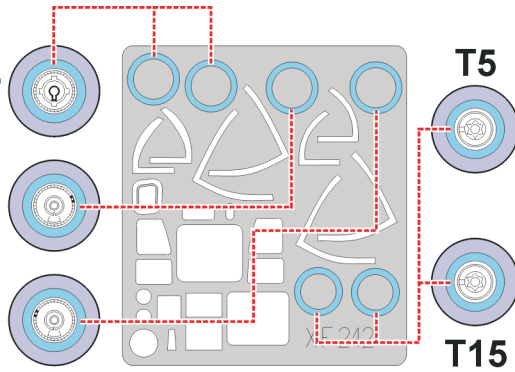
The die-cut mask for accurate canopy frame painting of the
Revell 1/48 KIT

XF 212

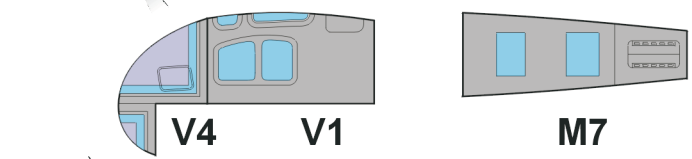
LIQUID MASK ■



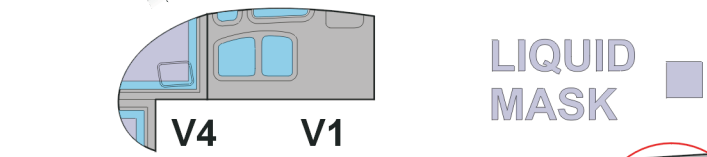
2pcs.
J12
J17
J18



5.) **INTERIOR COLOR**

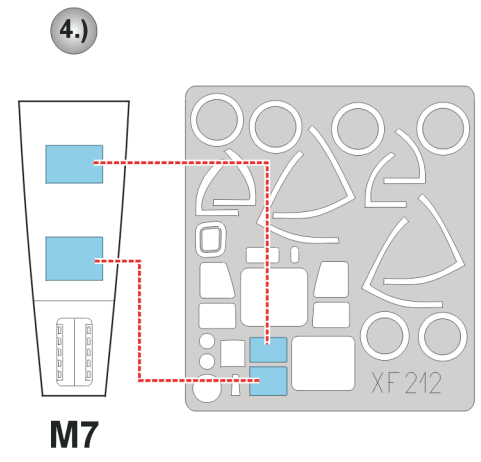


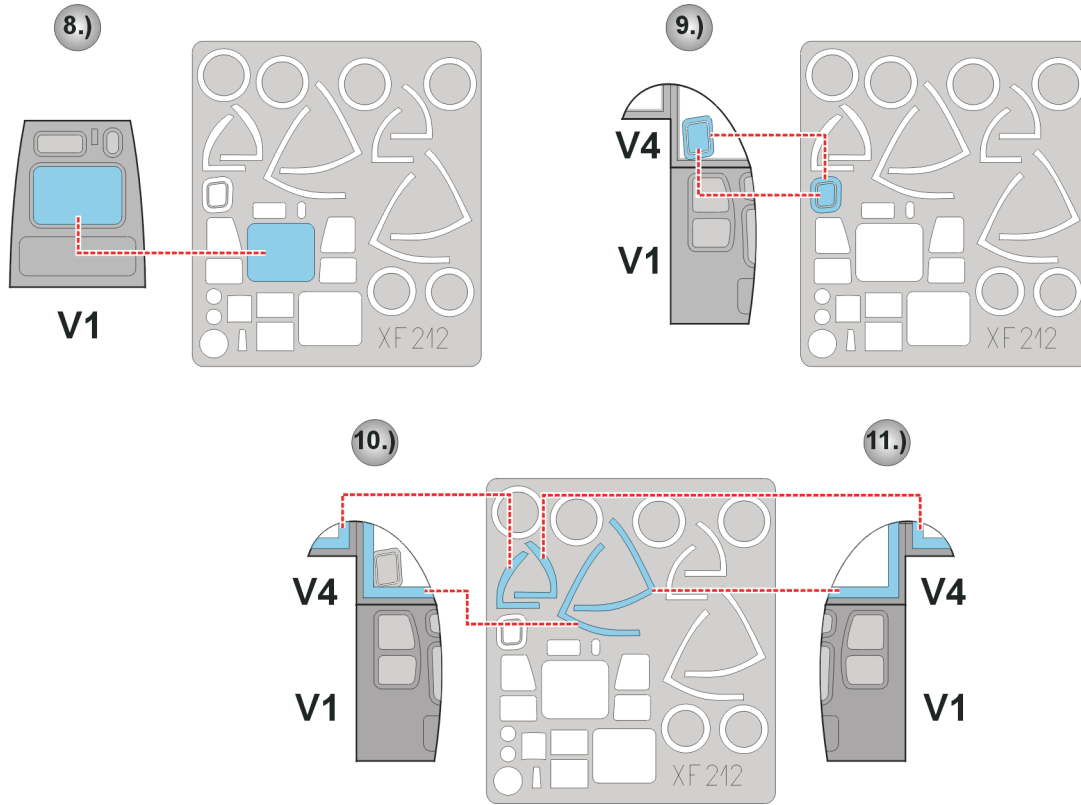
6.) **RUBBER COLOR**



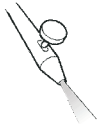
LIQUID MASK ■

7.) **REMOVE MASK**

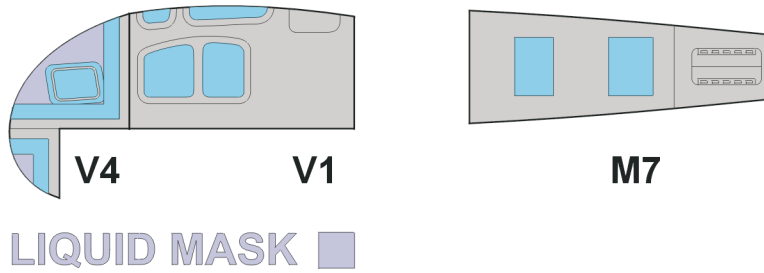




12.)



CAMOUFLAGE COLOR



13.)

REMOVE MASK

