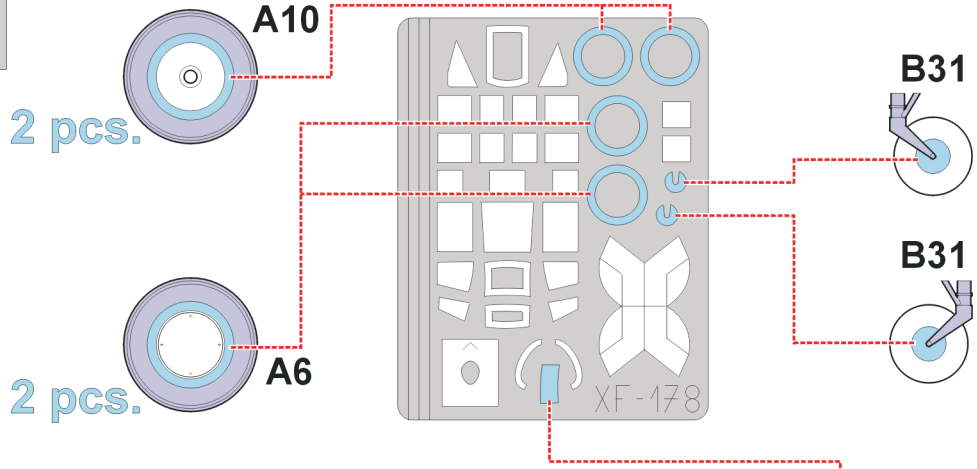


eduard
Express Mask

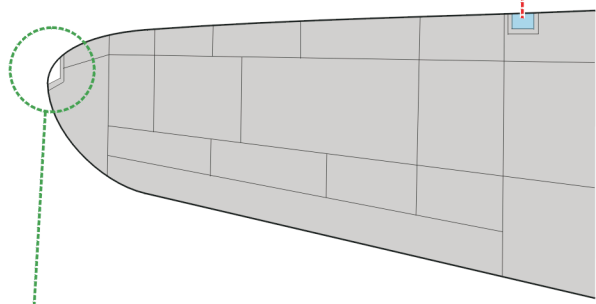
XF 178

Ki-45 Toryu/Nick

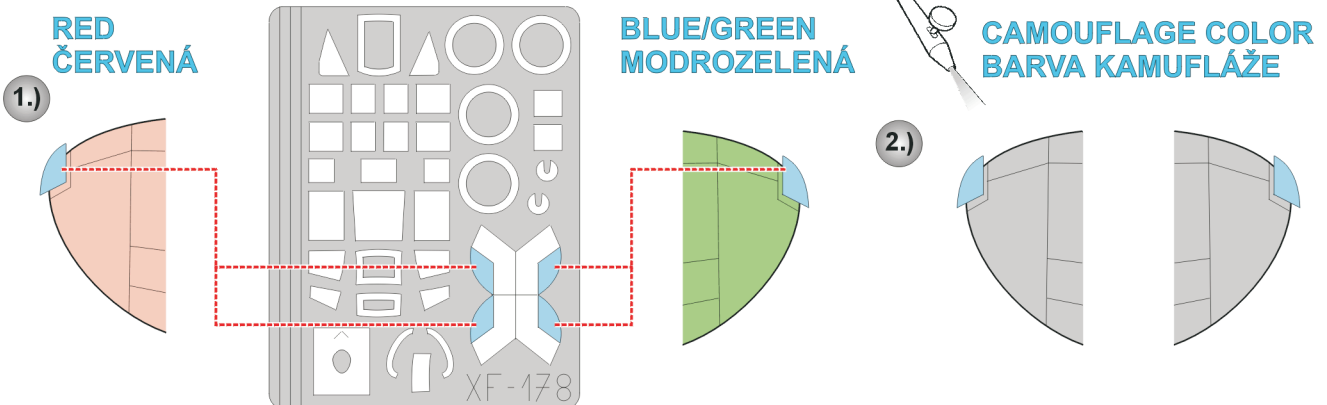
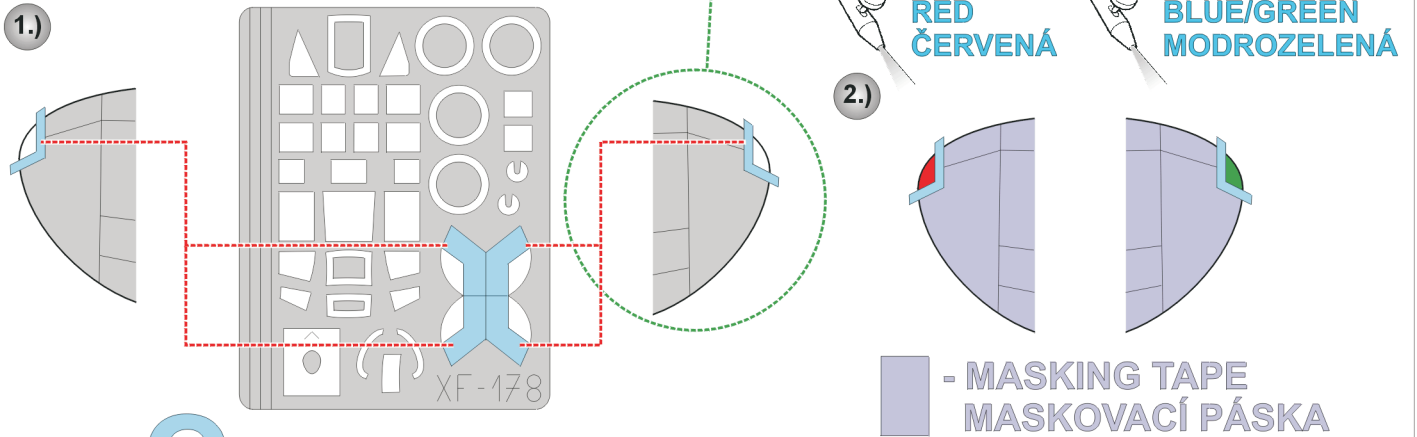
The die-cut mask for accurate canopy frame painting of the
Nichimo 1/48 KIT

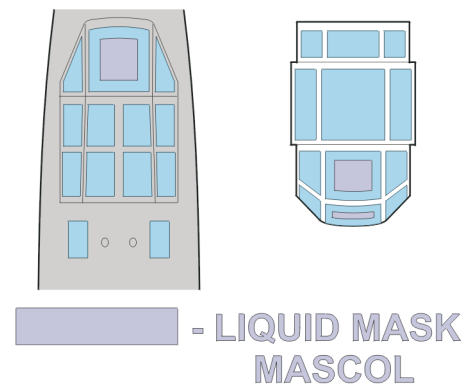
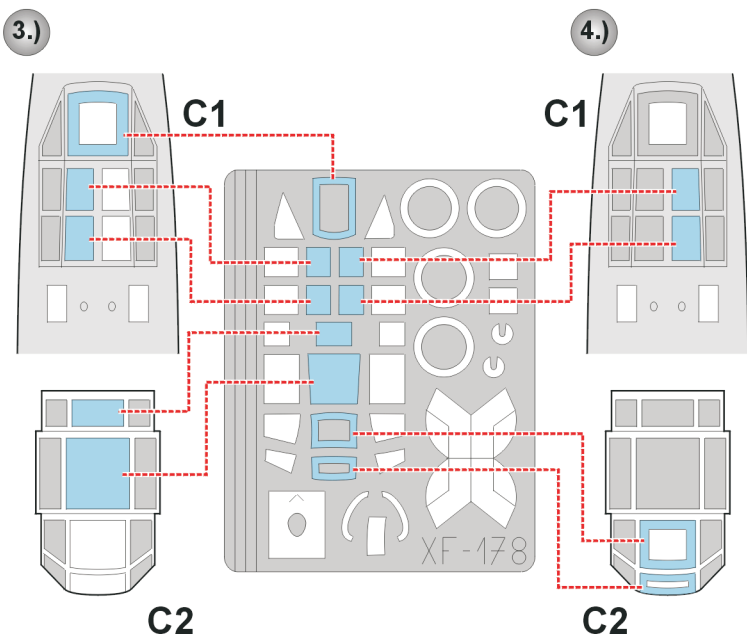
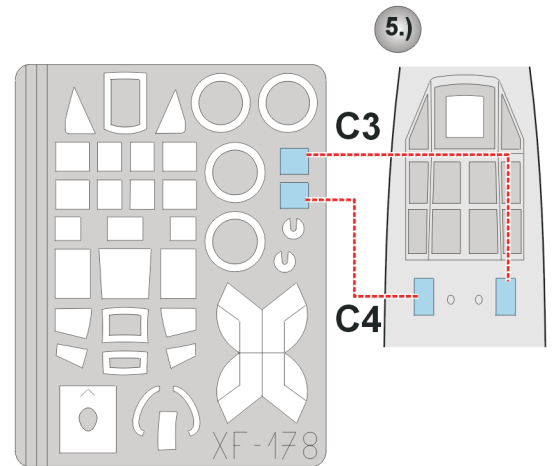
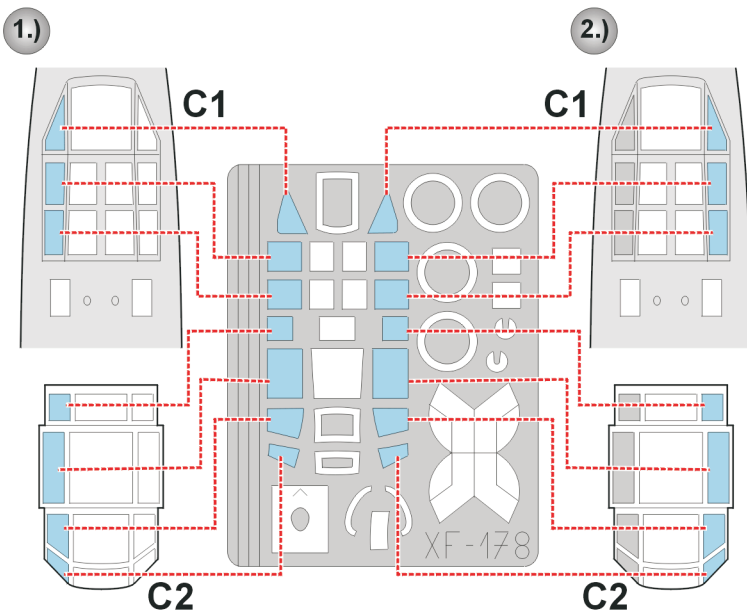
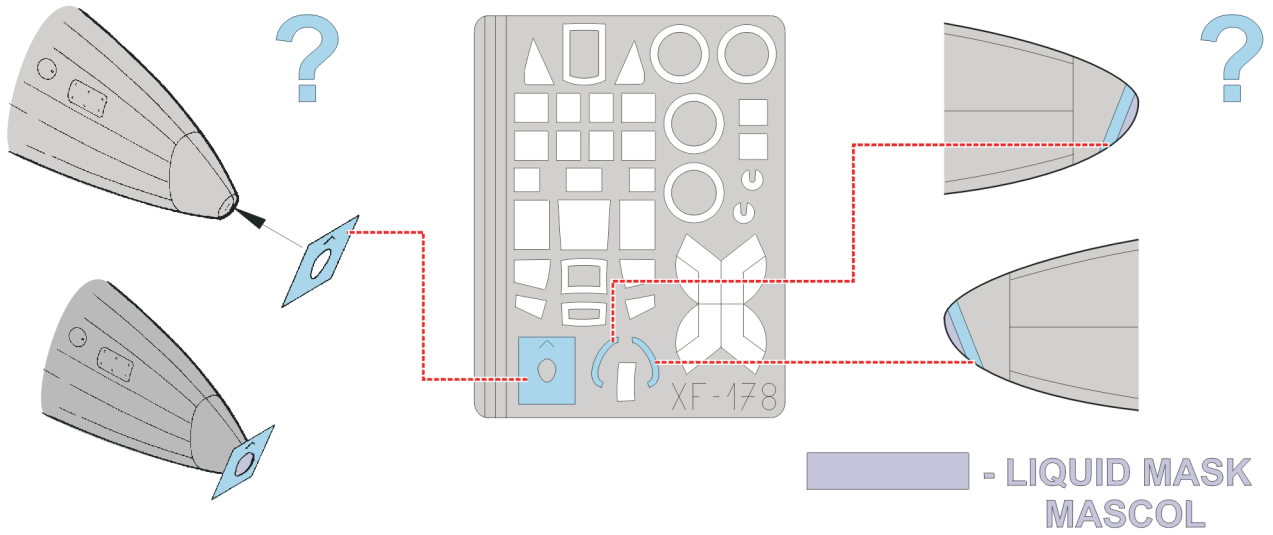


**- LIQUID MASK
MASCOL**



**CAMOUFLAGE COLOR
BARVA KAMUFLÁŽE**





REFERENCES: WWII FIGHTERS, DESIGN WITH PRECISION
Replic #61/septembre 1996