



Lysander Mk.III



The Westland Lysander was designed in the late thirties as a replacement for the older Hawker Audax biplanes in the army co-operation role. Good slow speed characteristics for visual observation, short take-off and landing capability, provision for message pickup, aerial reconnaissance, a radio, and a small bomb load were some of the requirements. The first variant, the Lysander Mk.I, was available in March, 1938. The Lysander Mk.III, with a new Mercury XX powerplant, and later the Mercury 30, were available in August, 1940. The Mk.IIIA variant was improved by the addition of floor and side cockpit armour, twin Browning guns, new radio equipment and a strengthened rear fuselage. Some Mk.III's were later upgraded to the IIIA standard. Both the Mk.III and Mk.IIIA were converted to SD (Special Duties) version, used for long range delivery and pickup of agents inside enemy territory. At least 25 aircraft were thus converted, the last of which remained operational until October, 1945.

Wingspan - 15,24 m

Length - 9.3 m

Maximum speed - 336 km/h



Westland Lysander byl skonstruován ve druhé polovině třicátých let jako náhrada zastarávajících dvouplášňů Hawker Audax. Byly požadovány dobré letové vlastnosti v pomalém letu, krátký start a přistání, schopnost vyzvedávání zpráv od pozemních jednotek, rádiové vybavení a závěsníky pro malé pumy. První verze, Lysander Mk.I, přicházela k jednotkám RAF v březnu 1938. Lysander Mk.III, poháněný novým motorem Mercury XX, a později Mercury 30, se do výzbroje dostal v srpnu 1940. Verze Mk.IIIA byla vylepšena montáží dodatečného pancíře na boky a podlahu prostorů posádky, novým radiovým vybavením a zesílením zadní části trupu. Řada Mk.III byla později upravena na standard verze Mk.IIIA. Obě tyto verze byly v počtu asi 25 kusů konvertovány na verzi SD (Special Duties - Zvláštní účely), používanou pro vysazování a vyzvedávání agentů na nepřátelském území. Lysandery Mk.III (SD) zůstaly ve službě až do října 1945.

Rozpětí - 15,24 m

Délka - 9.3 m

Maximální rychlost - 336 km/h

ATTENTION *

UPOZORNĚNÍ *

ACHTUNG *

ATTENTION *

注意



Carefully read instruction sheet before assembling. When you use glue or paint, do not use near open flame and use in well ventilated room. Keep out of reach of small children. Children must not be allowed to suck any part, or pull vinyl bag over the head.



Před započítím stavby si pečlivě prostudujte stavební návod. Při používání barev a lepidel pracujte v dobře větrané místnosti. Lepidla ani barvy nepoužívejte v blízkosti otevřeného ohně. Model není určen malým dětem, mohlo by dojít k požití drobných dílů.



lire soigneusement la fiche d'instructions avant d'assembler. Ne pas utiliser de colle ou de peinture à proximité d'une flamme nue, et aérer la pièce de temps en temps. Garder hors de portée des enfants en bas âge. Ne pas laisser les enfants mettre en bouche ou sucer les pièces, ou passer un sachet vinyl sur la tête.



Von dem Zusammensetzen die Bauanleitung gut durchlesen. Kleber und Farbe nicht nahe von offenem Feuer verwenden und das Fenster von Zeit zu Zeit Belüftung öffnen. Bausatz von kleinen Kindern fernhalten. Verhüten Sie, daß Kinder irgendwelche Bauteile in den Mund nehmen oder Plastiktüten über den Kopf ziehen.

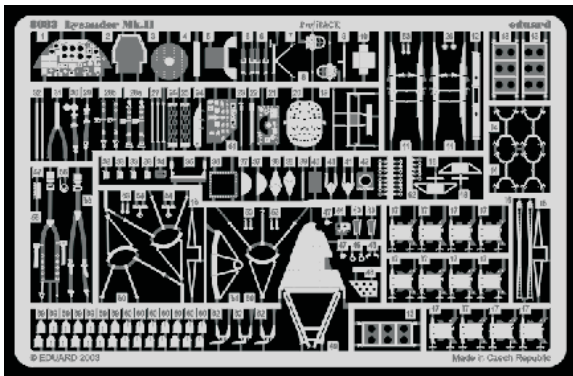


組み立てる前に必ず説明書をお読み下さい。接着剤や塗料をご使用の際は、窓を開けて十分な換気をおこない、火のそばでは使用しないで下さい。小さな子供の手の届かない所に必ず保管してください。部品や破片を噛んだり、なめたり、飲んだりすると大変危険です。又、部品を取り出した後のビニール袋は、小さな子供が頭から被ったりすると窒息する恐れがありますので、破り捨てて下さい。

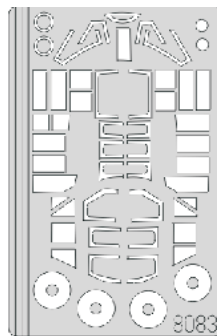
						
OPTIONAL FACULTATIF NACH BELIEBEN VOLBA 選択する	BEND PLIER SIL VOUS PLAIT BITTE BIEGEN OHNOUT 折る	OPEN HOLE FAIRE UN TROU OFFNEN VYVRTAT OTVOR 穴を開ける	SYMETRICAL ASSEMBLY MONTAGE SYMÉTRIQUE SYMMETRISCHE AUFBAU SYMETRICKÁ MONTÁŽ 左右均等に組み立てる	NOTCH L INCISION DER EINSCHNITT ZÁŘEZ 切る	REMOVE RETIREREN ODRÍZNOUT 移す	APPLY EXPRESS MASK AND PAINT BEFORE GLUING POUŽIT EXPRESS MASK NABARVIT PŘED SLEPENÍM

GUNZE		APPROXIMATE COLOR MATCH				
AQUEOUS	Mr.COLOR		TAMIYA	HUMBROL	REVELL	TESTORS
H 2	2	BLACK / SCHWARZ / NOIR / ČERNÁ	X 1	21	7	1747
H 4	4	YELLOW / GELB / JAUNE /) LUTÁ	X 8	69	12	1514
H 8	8	SILVER / SILBER / ARGENT / STŘÍBRNÁ	X 11	11	90	1546
H 12	33	FLAT BLACK / MATT SCHWARZ / NOIR MAT / MATOVÁ ČERNÁ	XF 1	33	8	1749
H 13	3	RED / ROT / ROUGE / ČERVENÁ	XF 9	73		
H 27	44	TAN / GELB BRAUN / MARRON CLAIR / TRÍSLOVÁ		9	80	
H 28	78	METAL BLACK / METALL SCHWARZ / GRIS METAL / OCELOVĚ ČERNÁ		201		2713
H 34	113	YELLOWISH BUFF / GELB / JAUNE /) LUTÁ		103		
H 47	41	RED BROWN / ROT BRAUN / BRUN-ROUGE / ČERVENOHNĚDÁ	XF 64	160		
H 58	27	INTERIOR GREEN / INTERIEUR GRÜN / VERT INTÉRIEUR / INT. ZELENÁ		151		1715
H 72	22	DARK EARTH / ERDFARBE / TERRE FONCÉE / ZEMITÁ HNĚDÁ	XF 52	29	87	
H 73	23	DARK GREEN / DUNKEL GRÜN / VERT FONCÉ / TMAVĚ ZELENÁ	XF 26	30		1786
H 74	26	SKY / HIMMEL / BLEU OEUF DE CANARD / NEBESKÁ MODŘ	XF 26	23		2349
H 76	61	GUN METAL / STAHLBLAU / GRIS METAL / DĚLOVINA	X10	53	383	1423
H 77	137	TIRE BLACK / REIFEN SCHWARZ / PNEU NOIR / BARVA PNEUMATIK		182		
H 335	335	MED. SEA GREY / MITTEL SEE GRAU / GRIS CENTRAL MER / STŘ. MOŘ. ŠEDÁ	XF 53	126	75	1721
H 344	81	RUST / ROST / ROUILLE / REZ		113	83	
Mr.METAL COLOR						
MC 219		BRASS / MESSING / CIUVRE JAUNE / MOSAZ		54	92	1582

PE - PHOTO ETCHED DETAIL PARTS



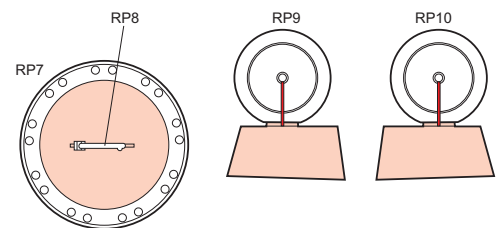
eduard
Express Mask



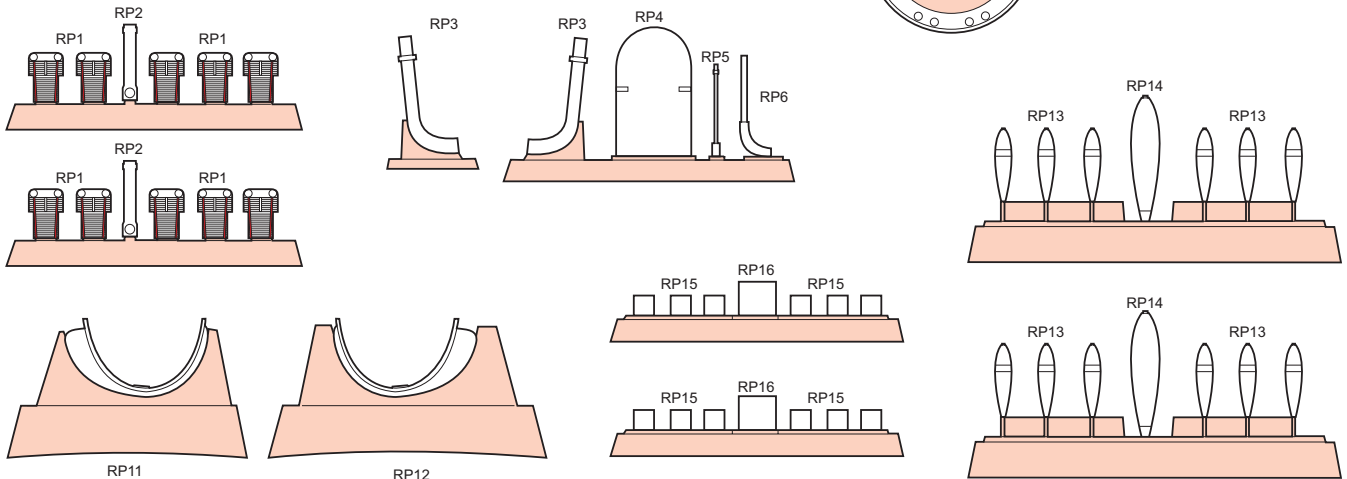
PRINT



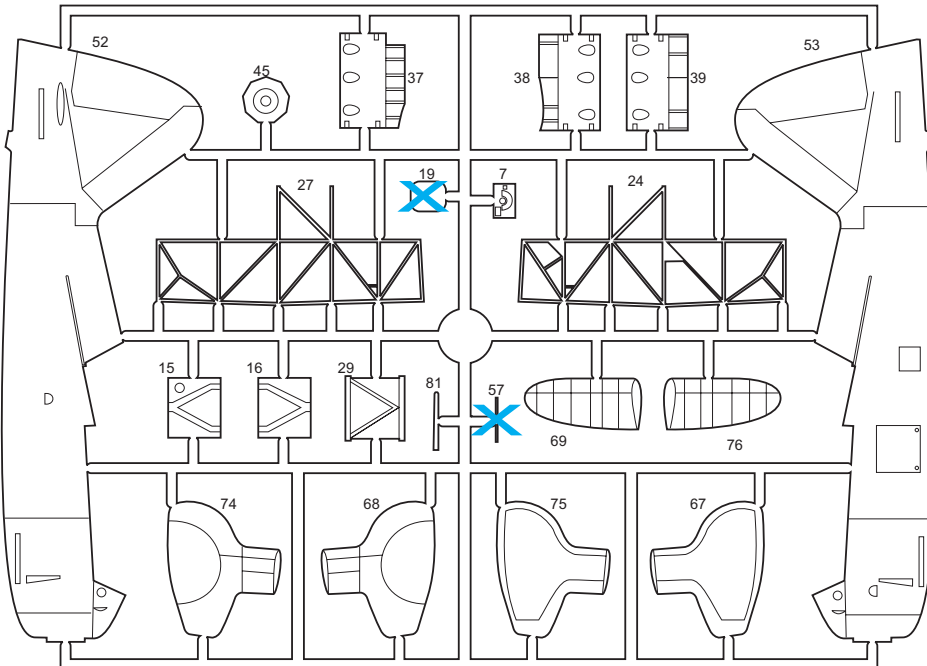
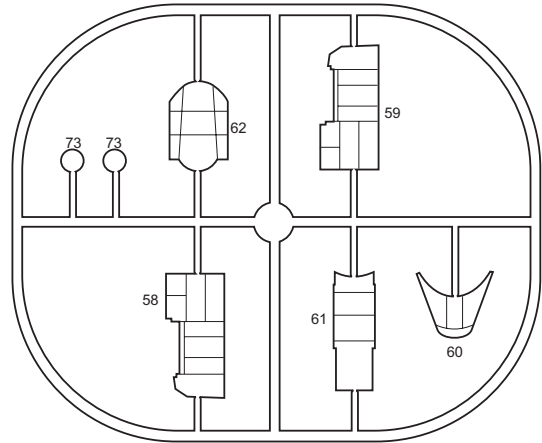
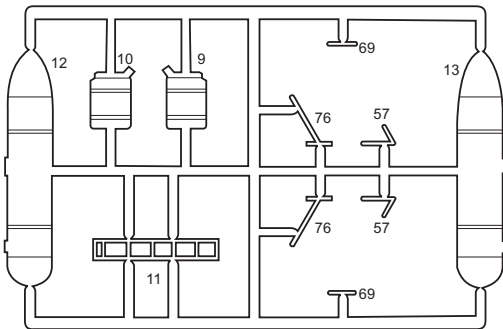
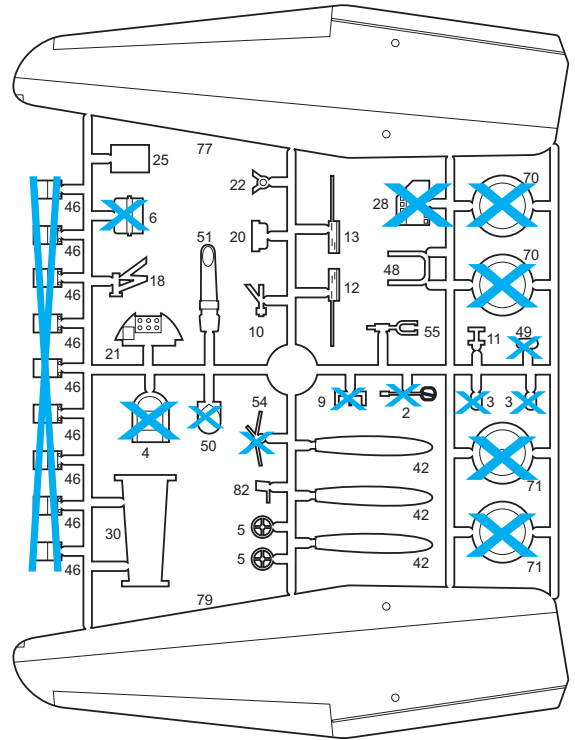
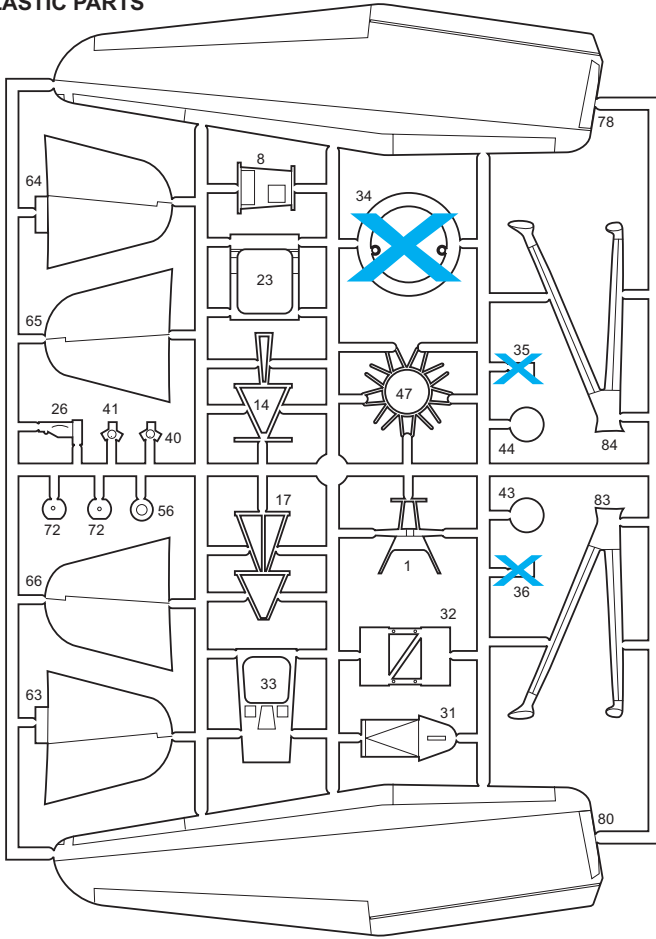
FILM



RP - RESIN PARTS

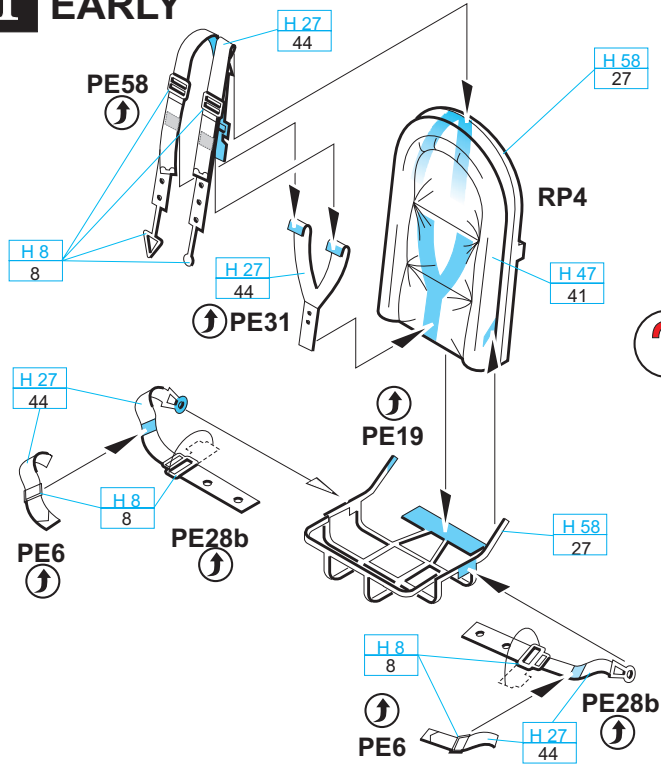


PLASTIC PARTS

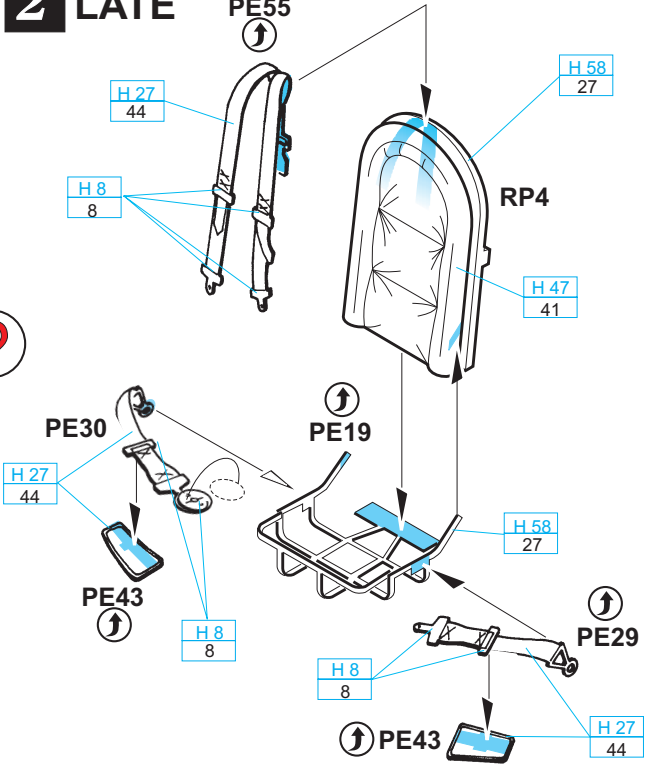


Parts not for use.
 Tyto díly nepouívejte při stavbě.
 Teile werden nicht verwendet.
 Pièces a ne pas utiliser.
 使用しない部品

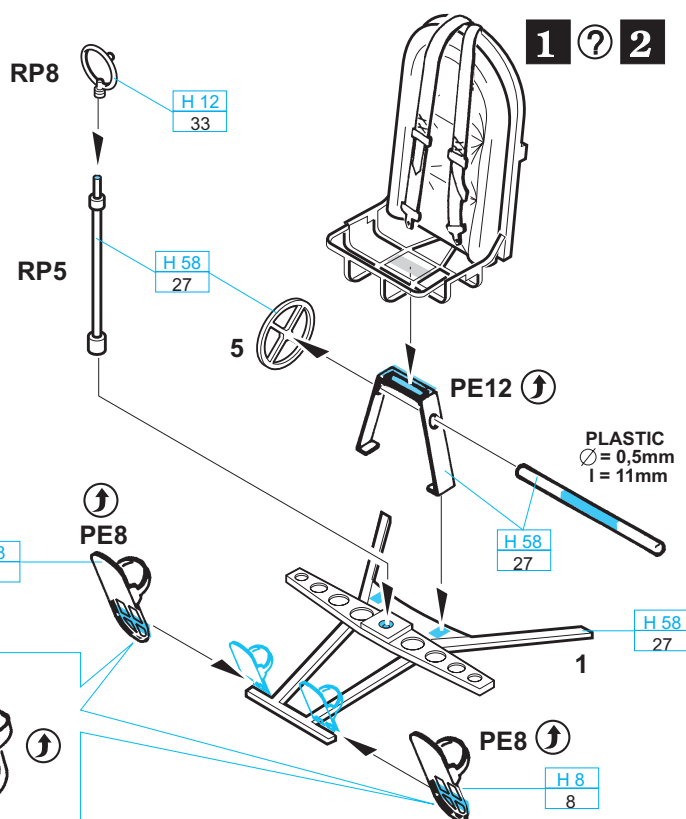
1 EARLY



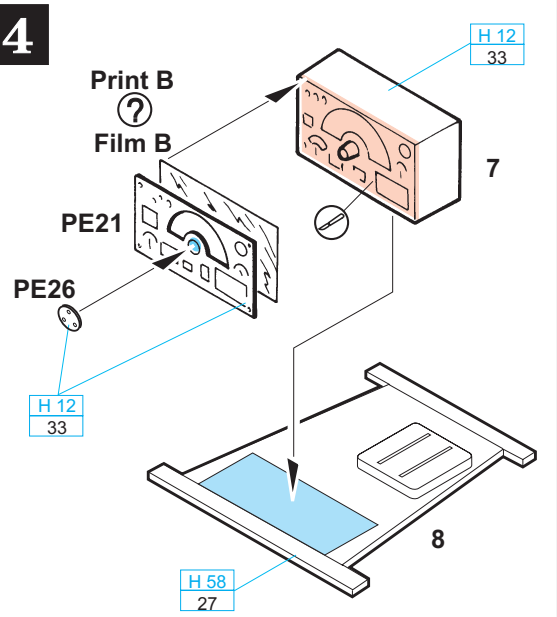
2 LATE



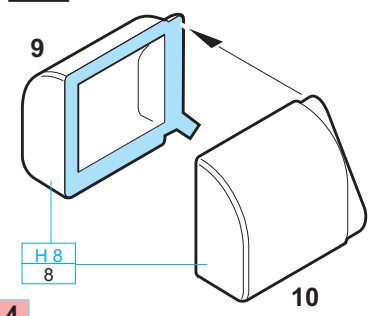
3



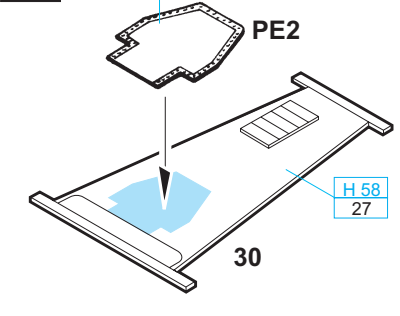
4



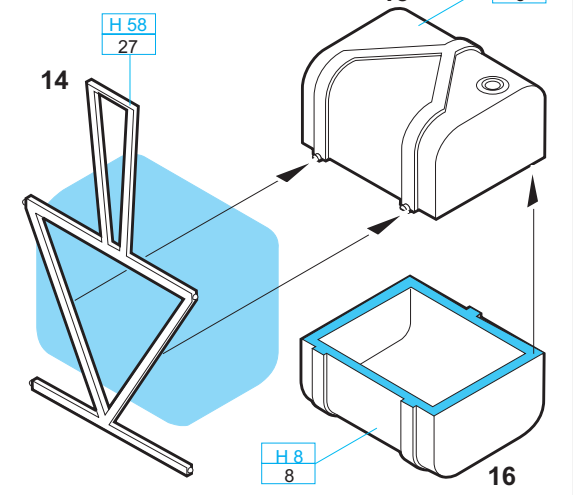
5 LYSANDER Mk.III SD



6

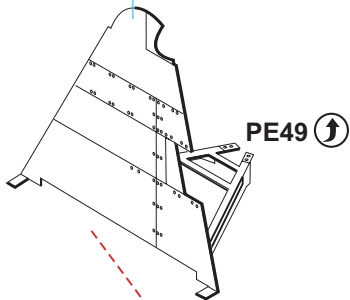


7



13

H 58
27

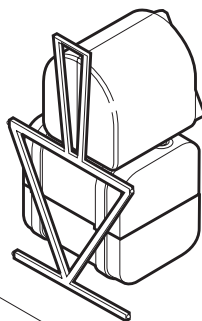


12

LYSANDER Mk.III SD

5

H 8
8



H 8
8

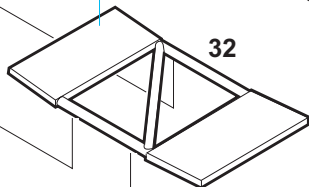


H 58
27

7

H 58
27

32

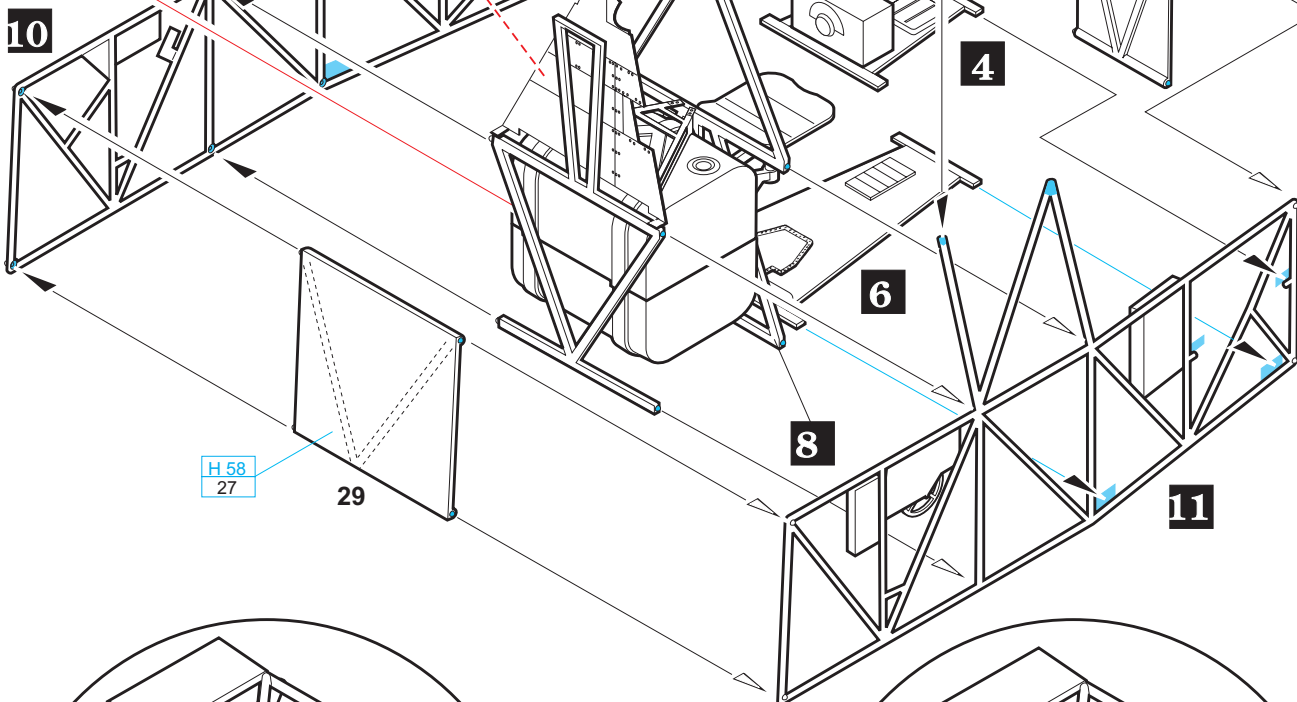


7

?

12

10



31

H 58
27

4

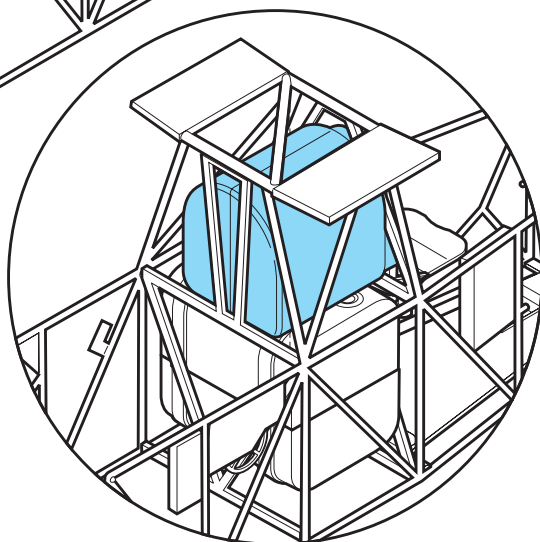
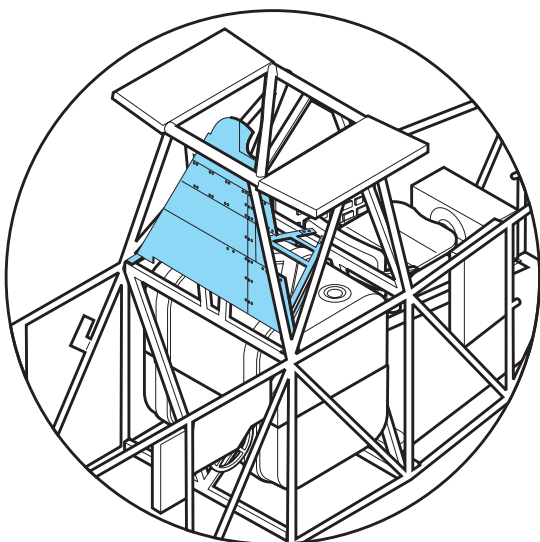
6

8

11

H 58
27

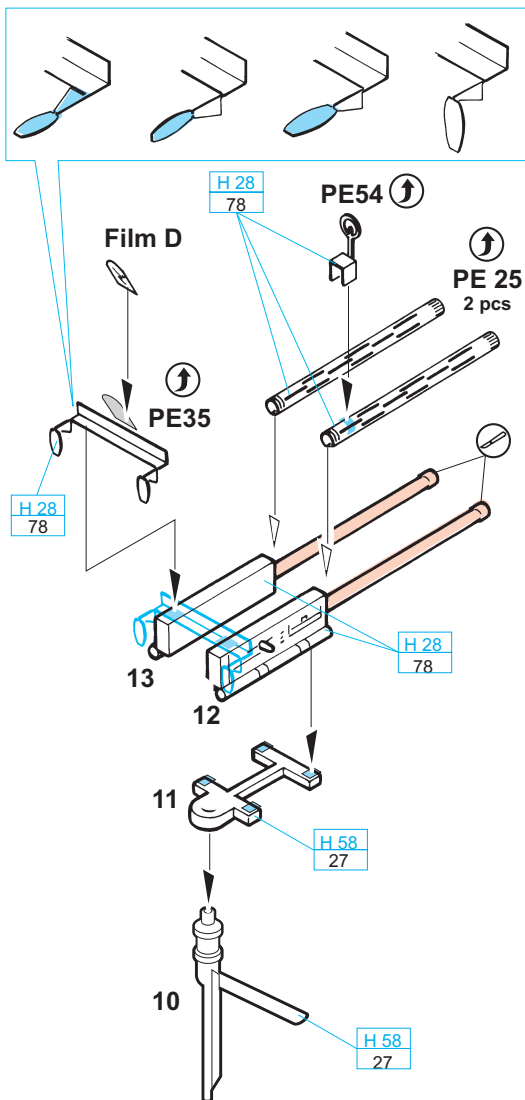
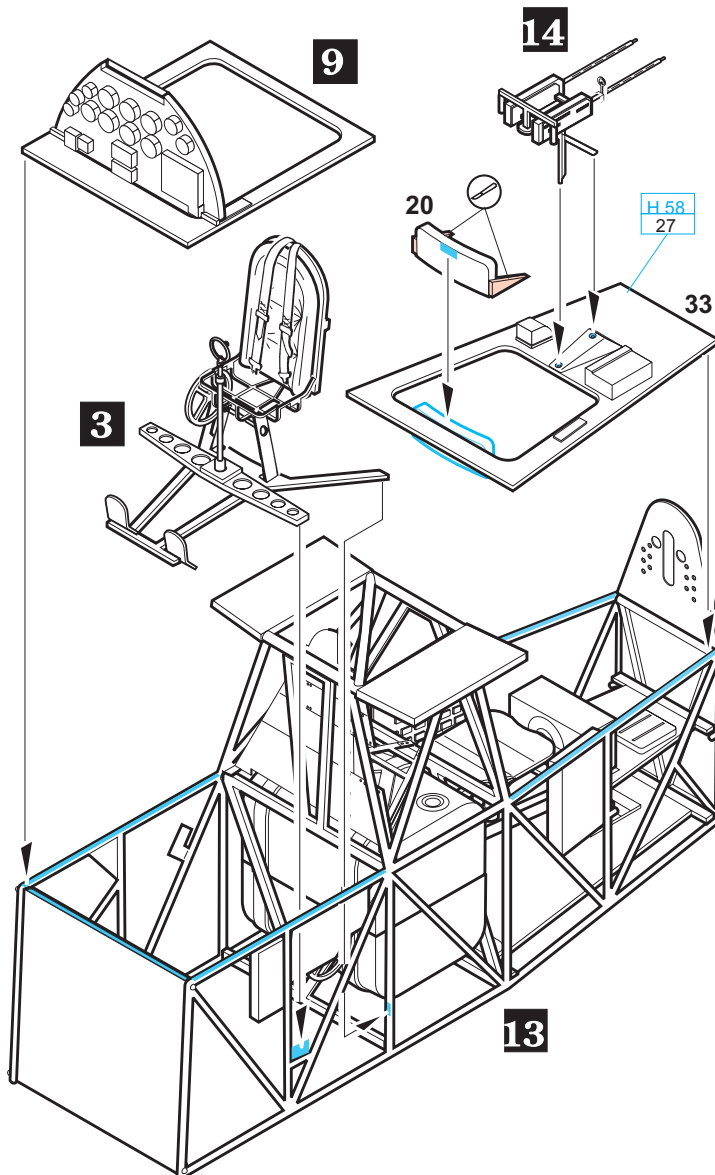
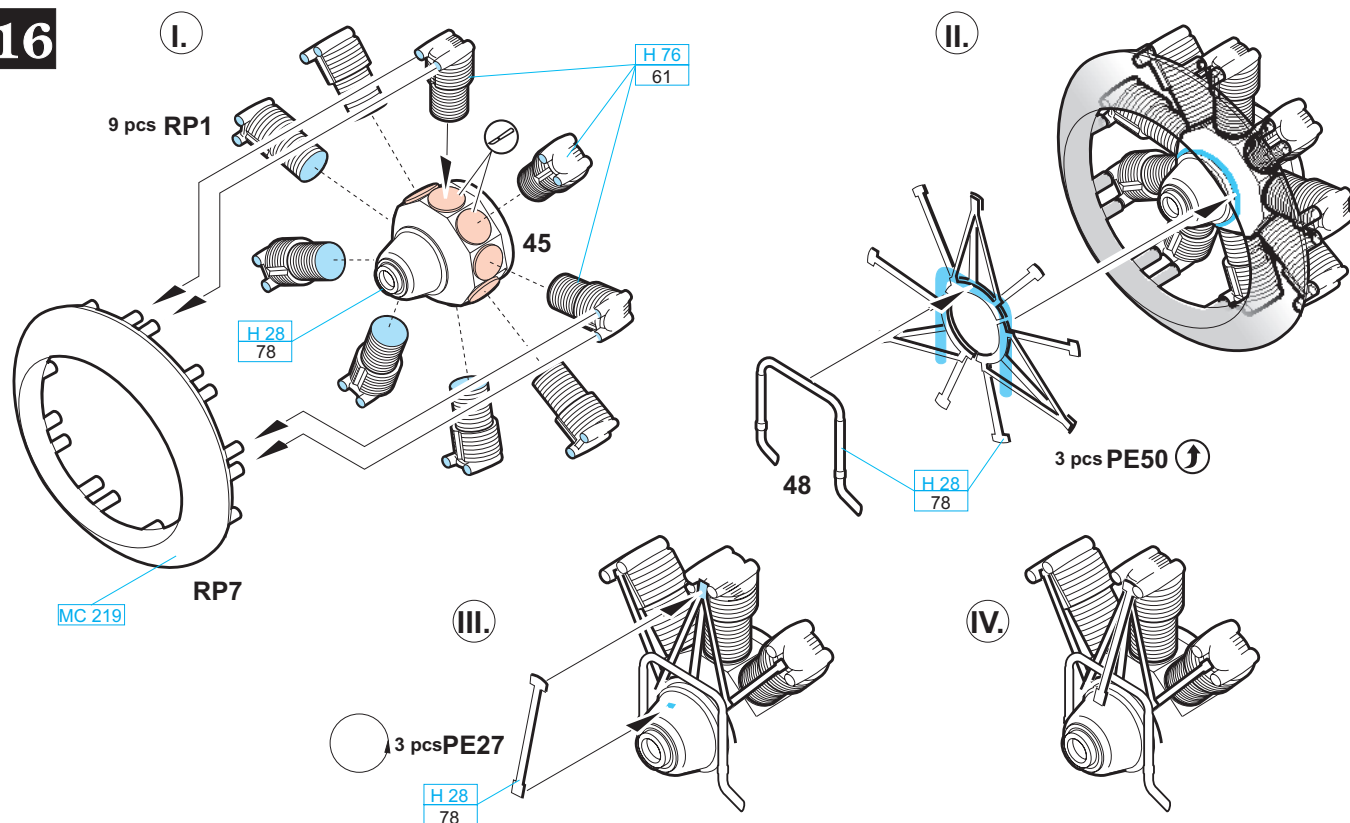
29

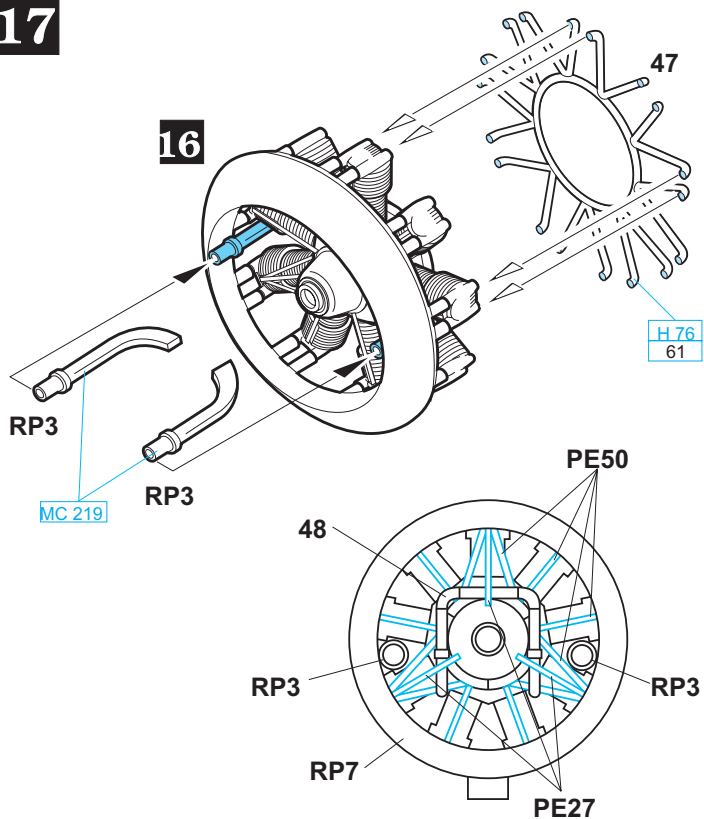
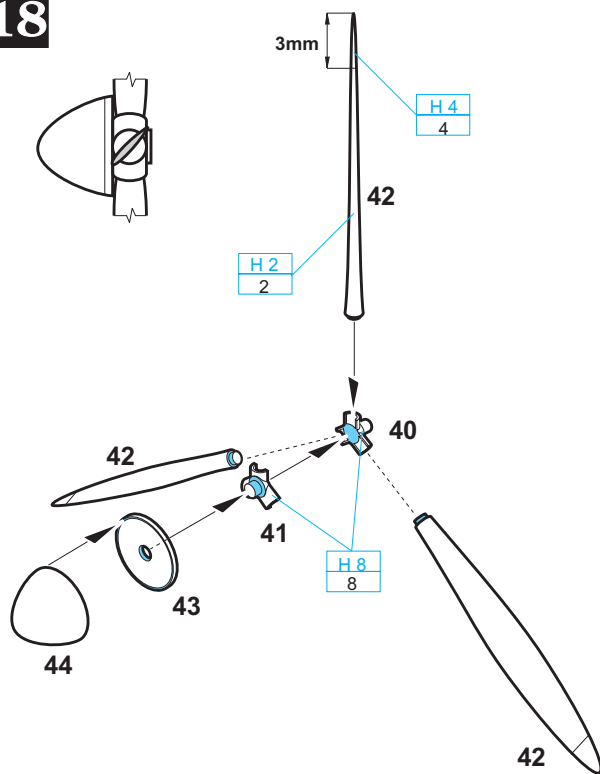
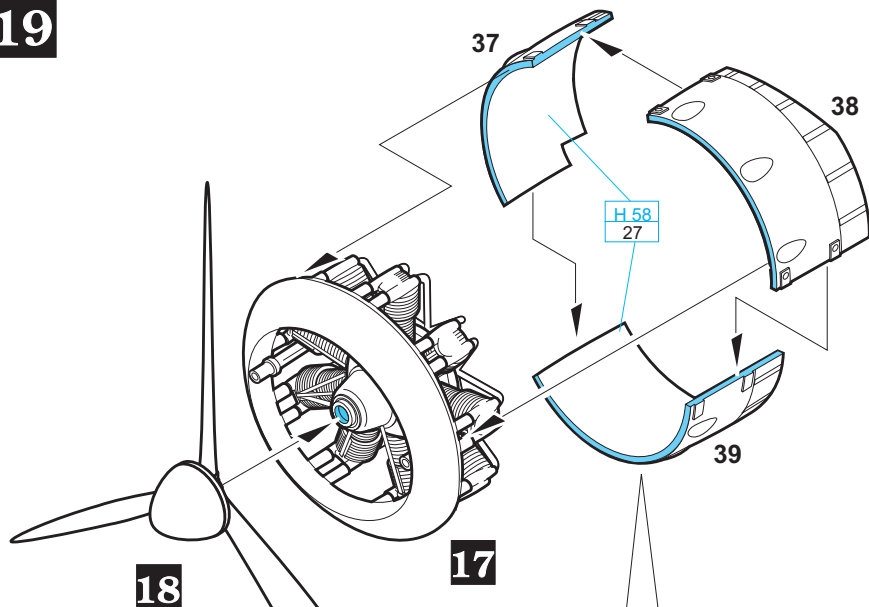
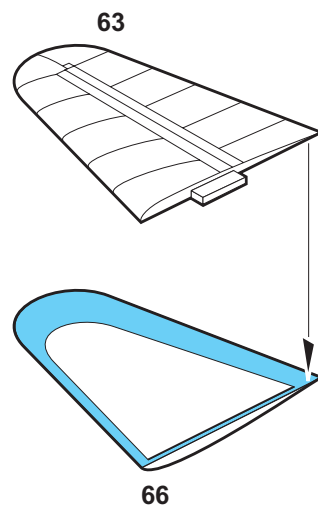
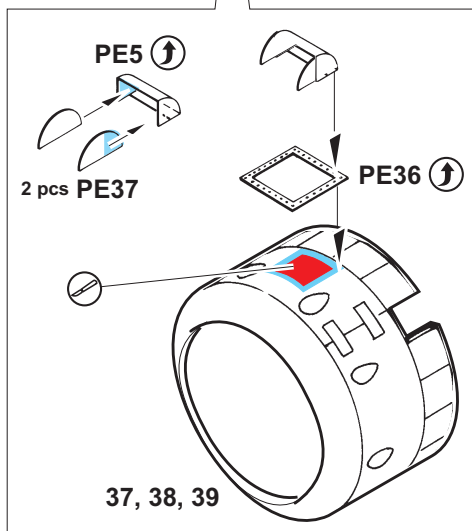
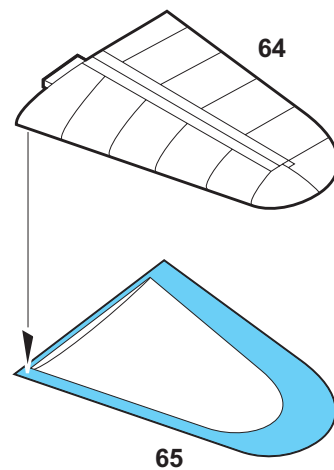


6

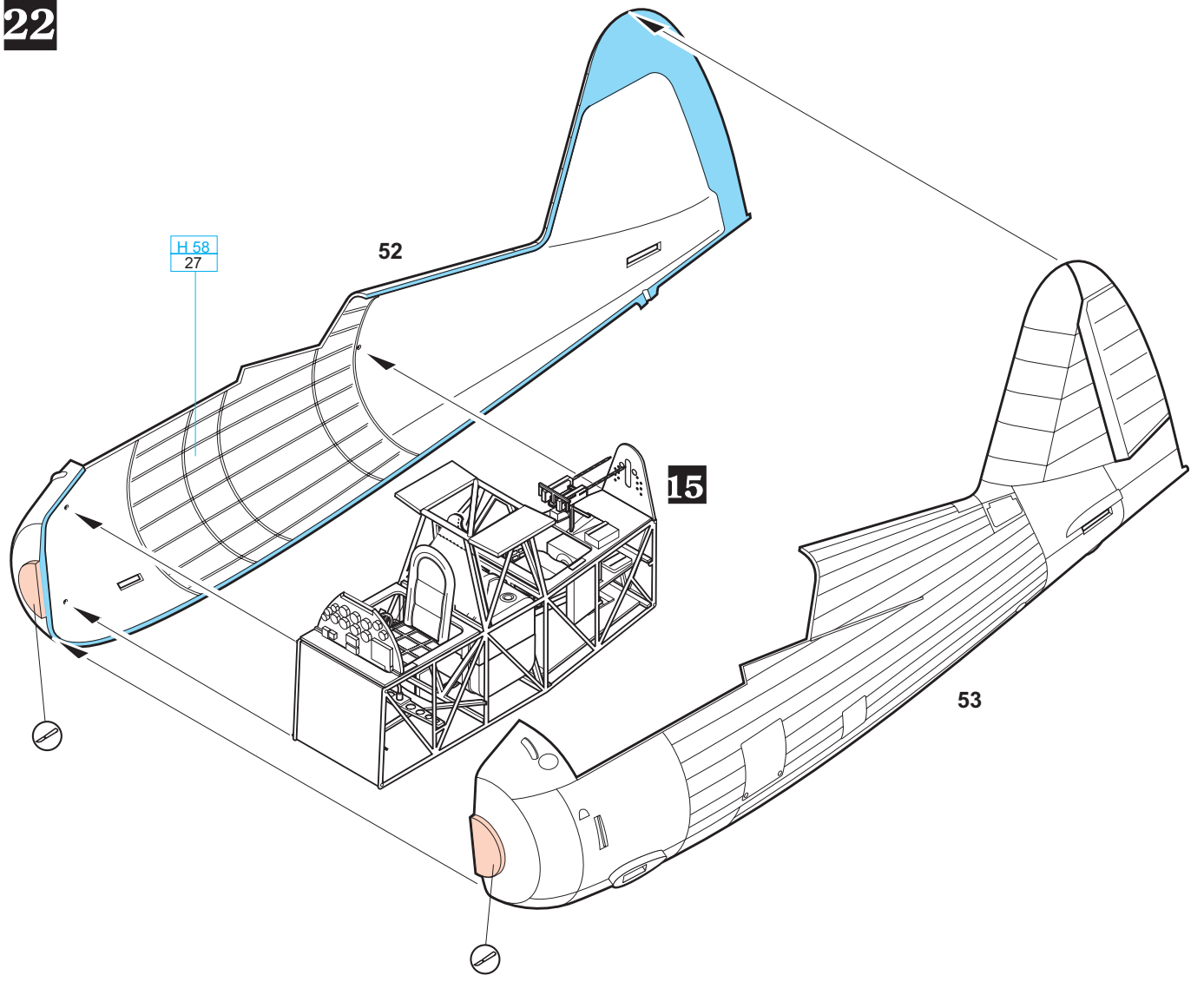
LYSANDER Mk.III

LYSANDER Mk.III SD

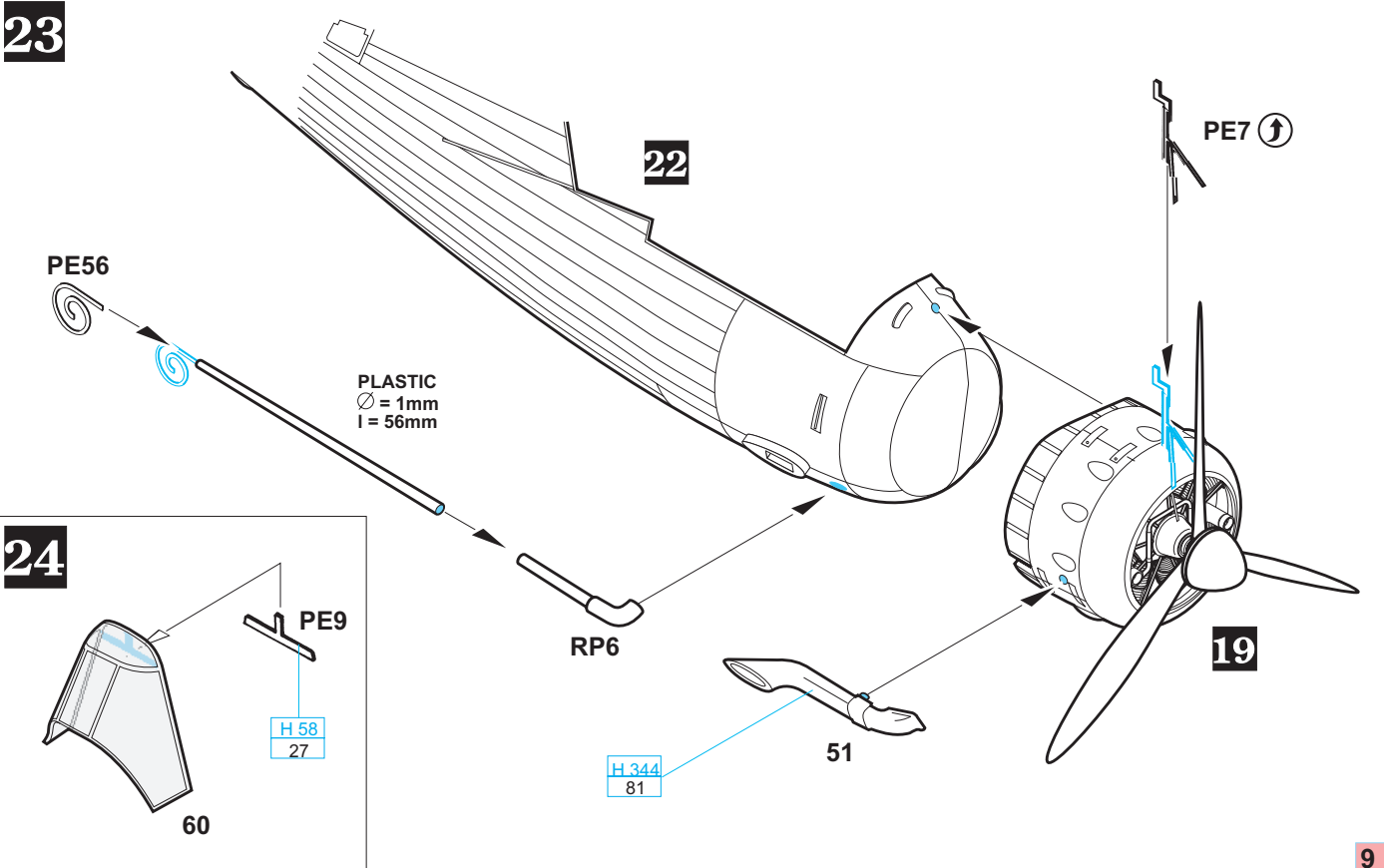
14**15****16**

17**18****19****20****21**

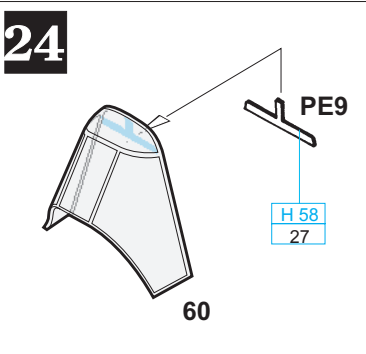
22

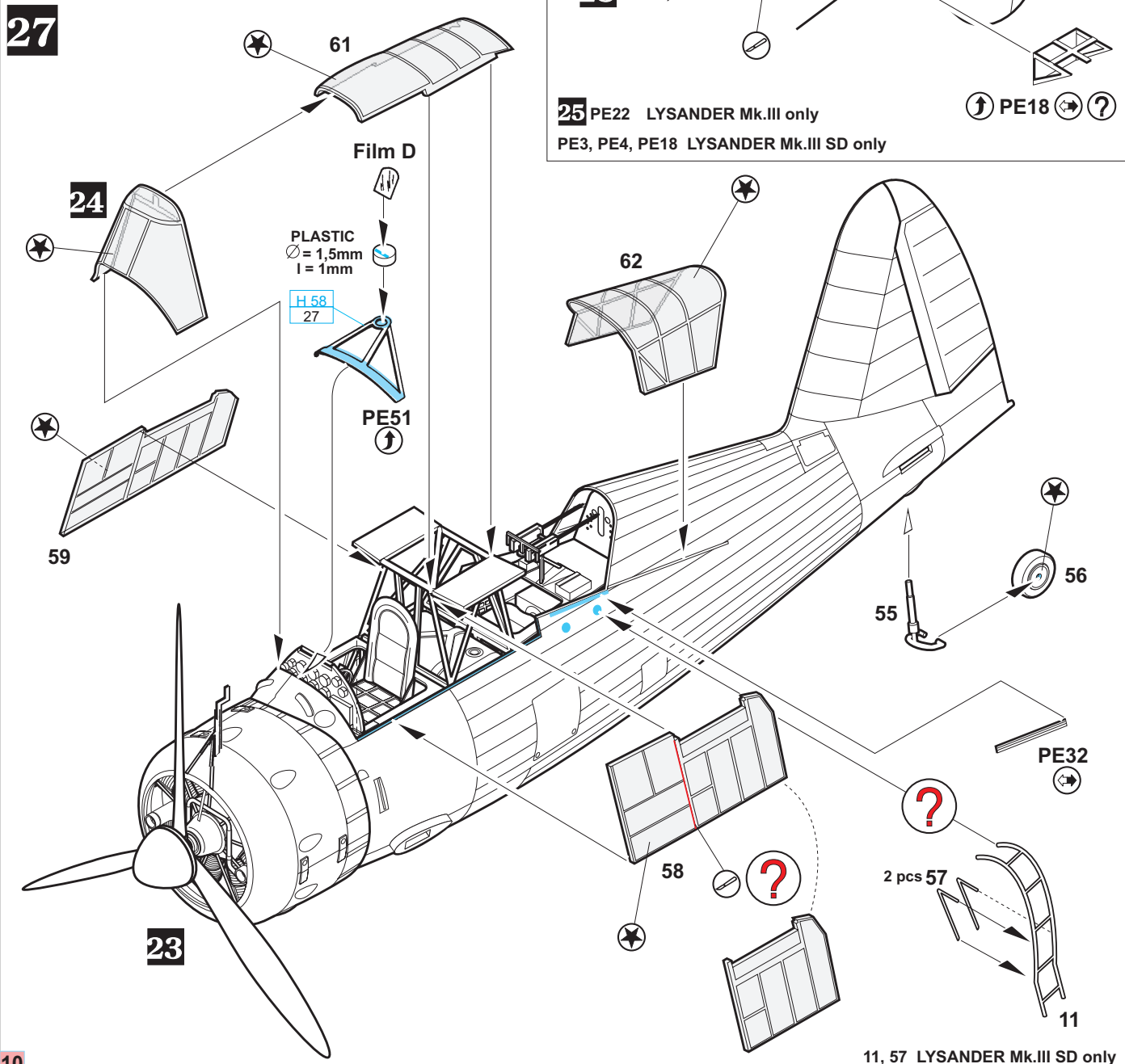
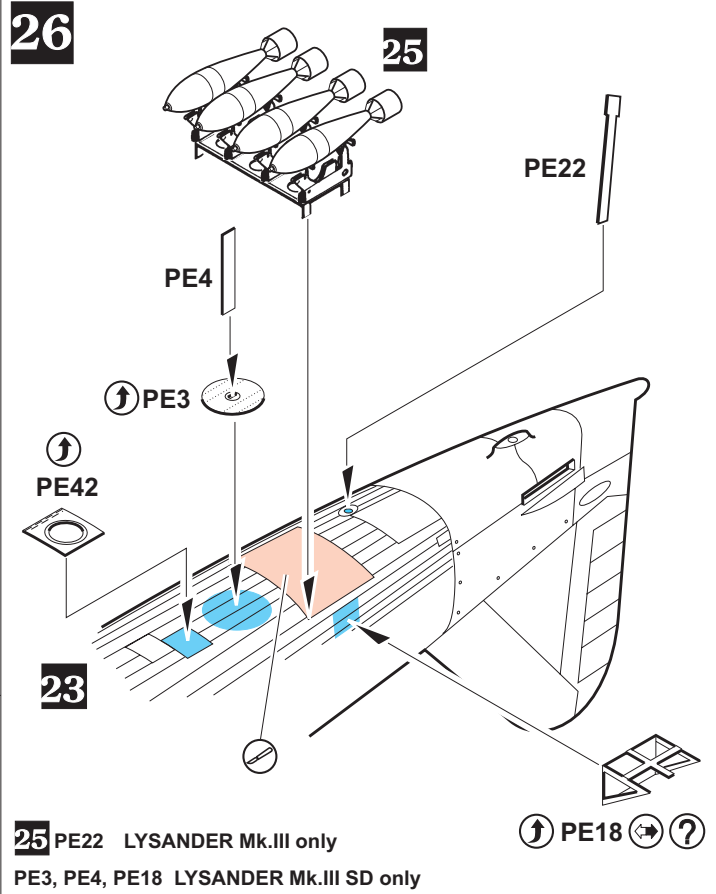
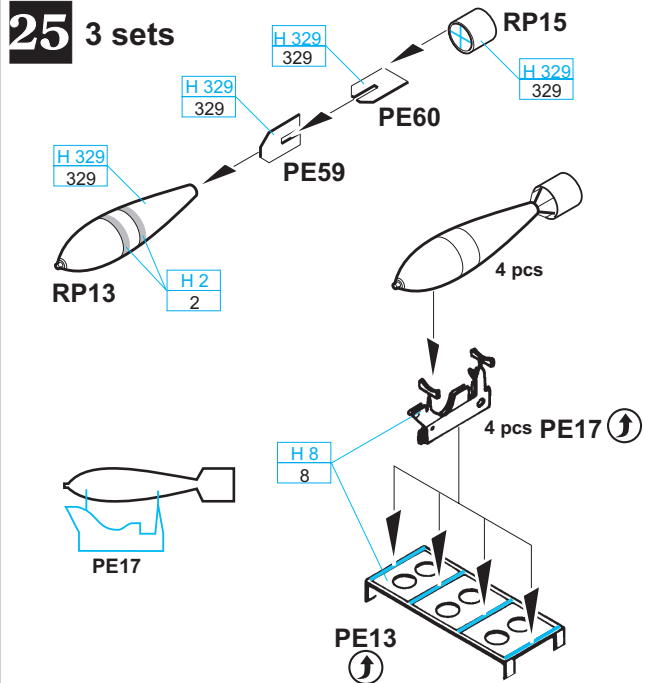


23

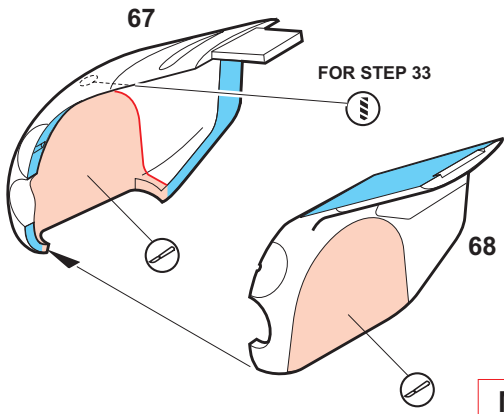


24



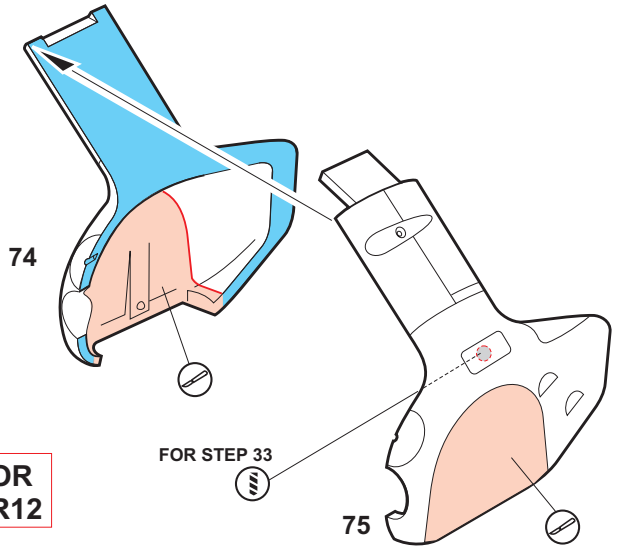


28

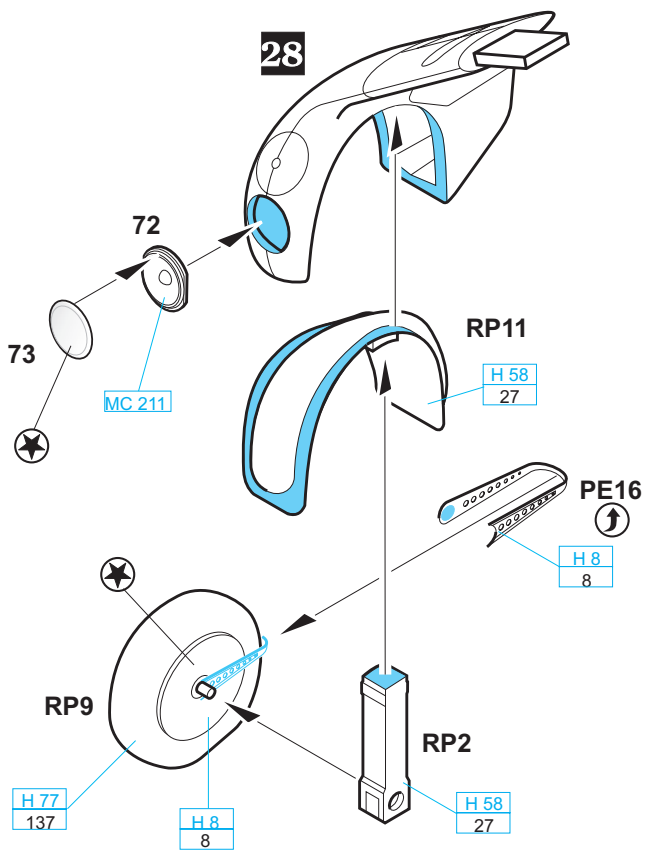


**MAKE HOLE FOR
FIT PUR 11, PUR12**

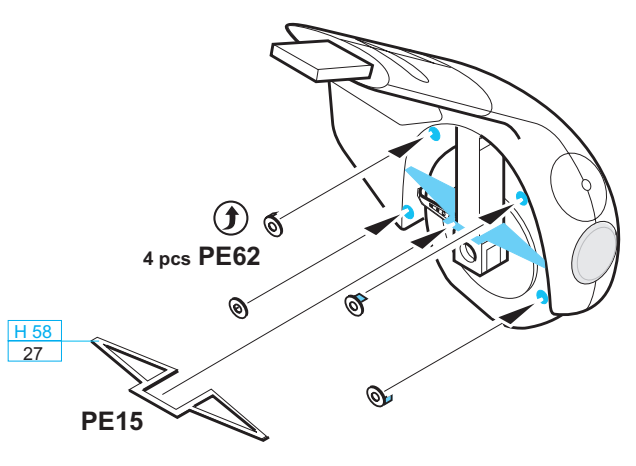
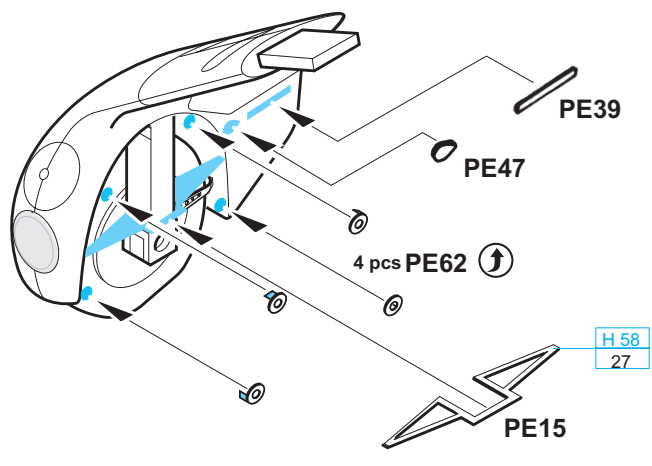
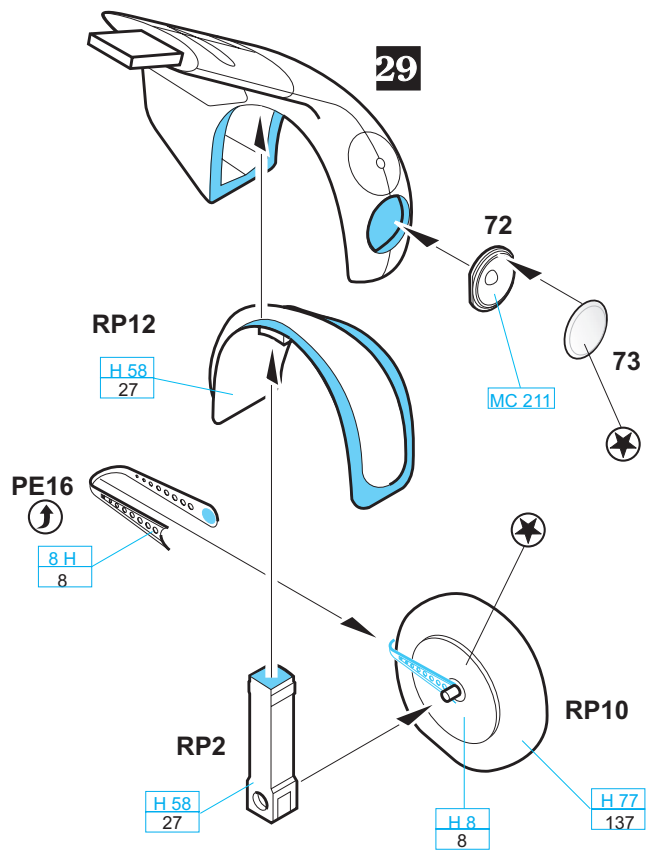
29



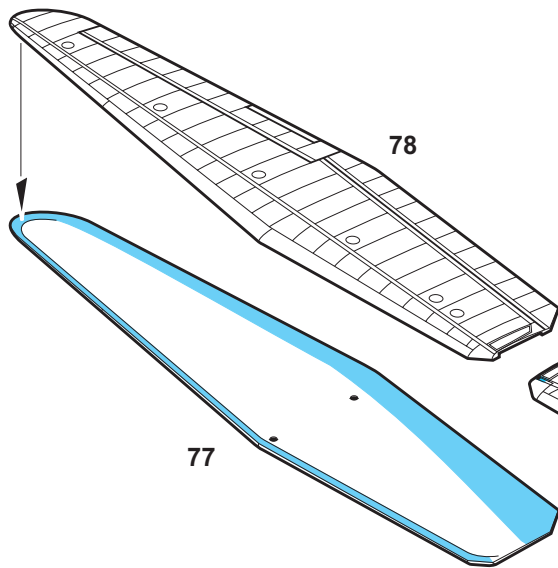
30



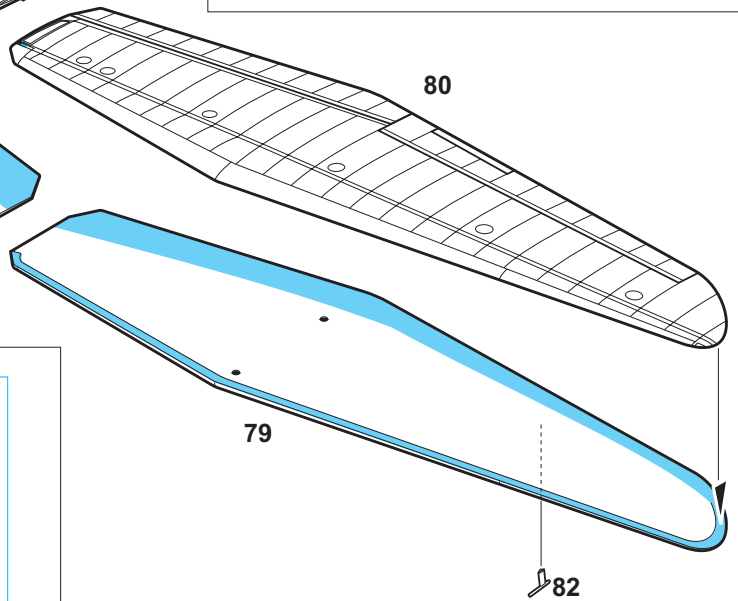
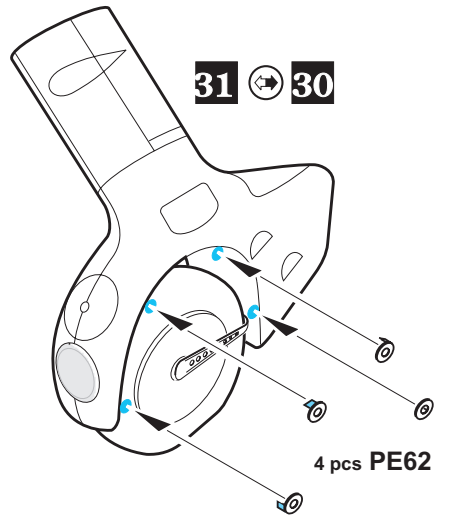
31



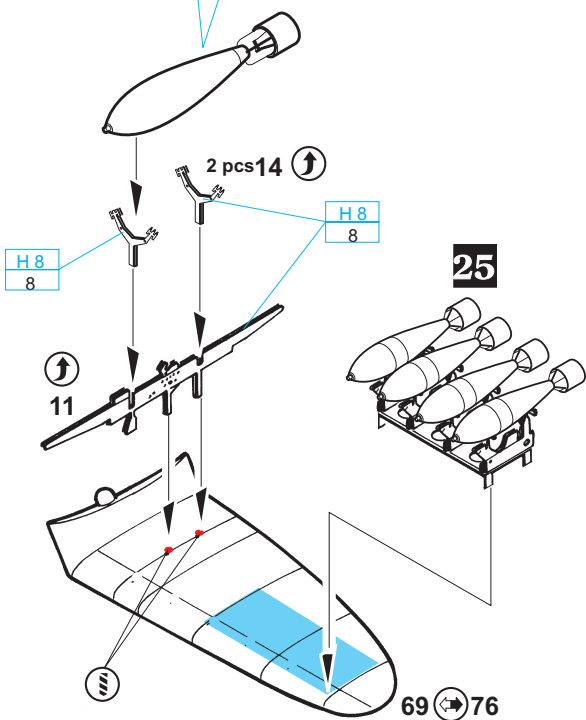
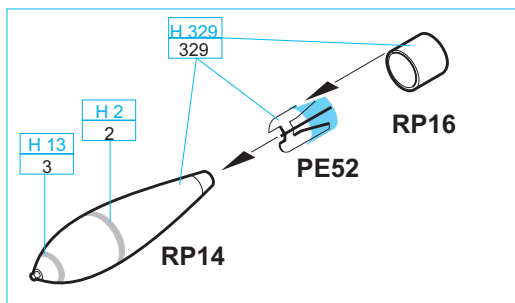
32



33

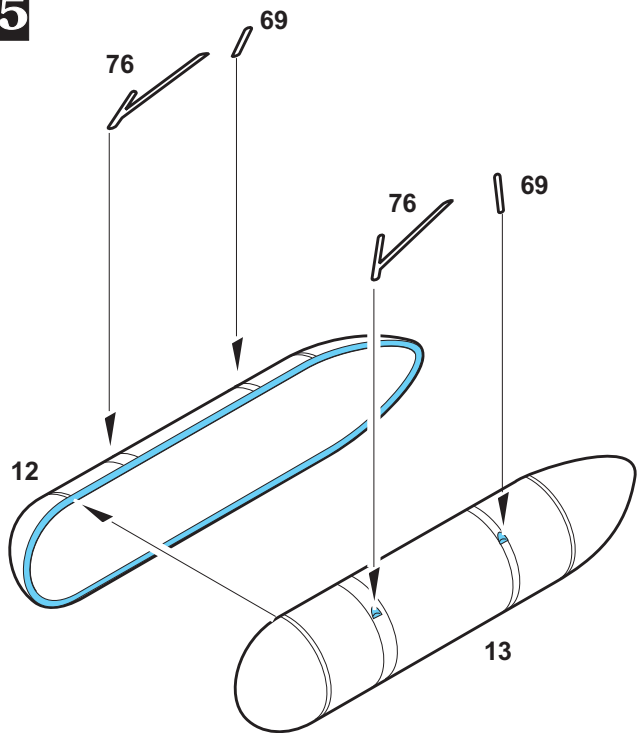


34



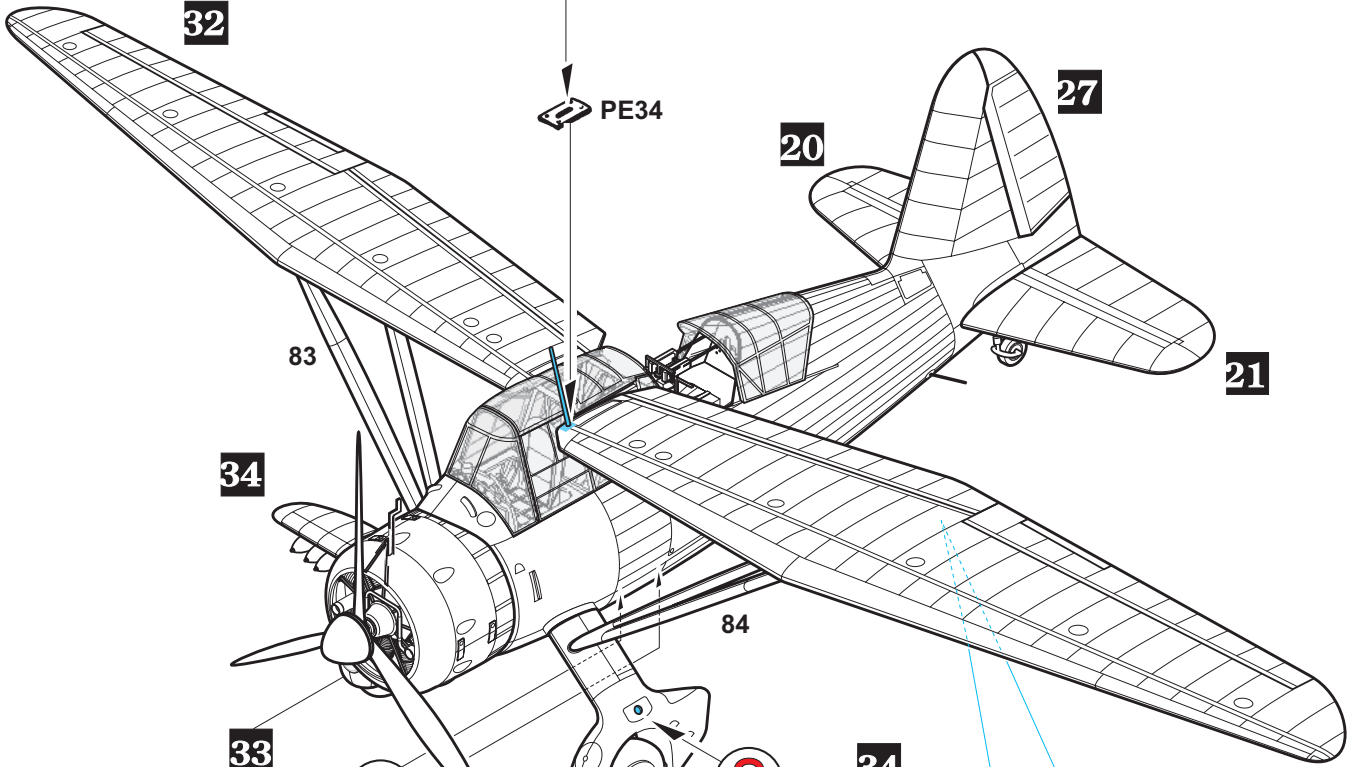
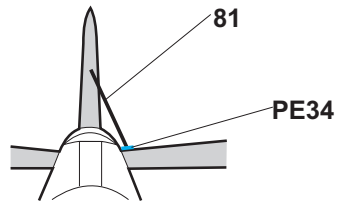
LYSANDER Mk.III

35



LYSANDER Mk.III SD

81 LYSANDER Mk.III only



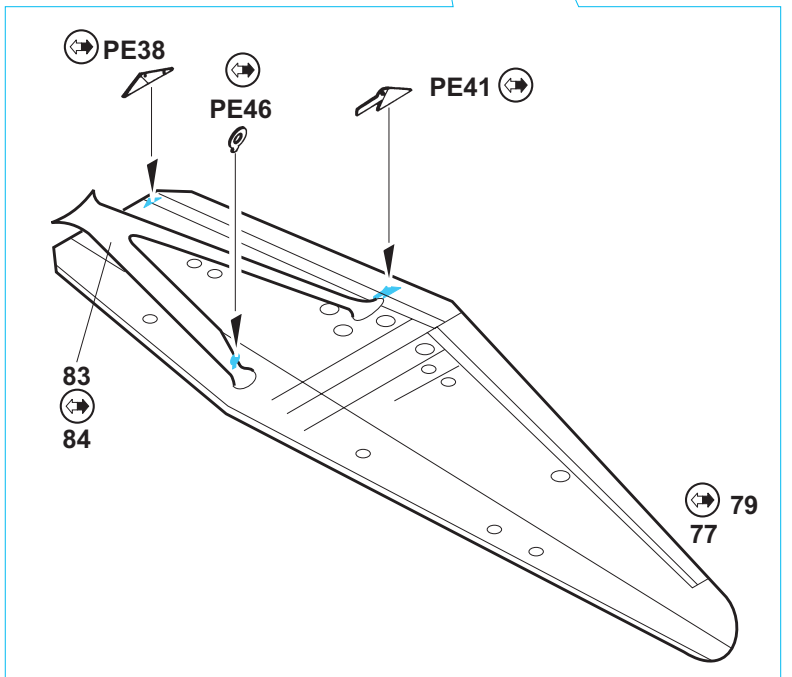
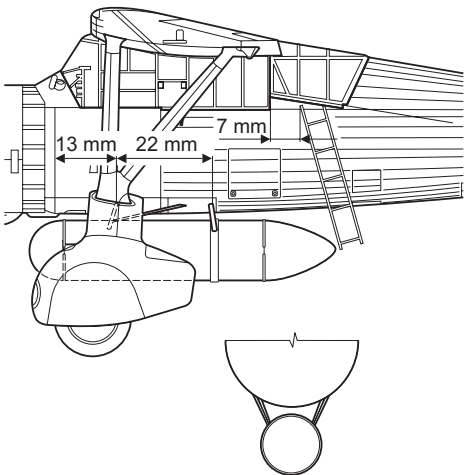
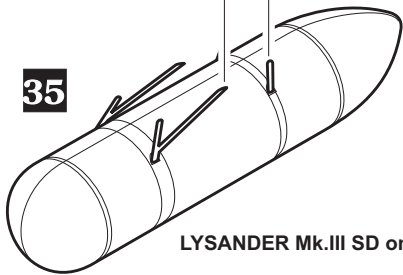
?

?

LYSANDER Mk.III only

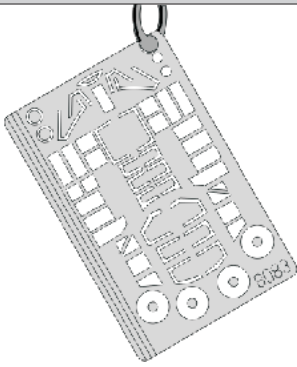
35

LYSANDER Mk.III SD only

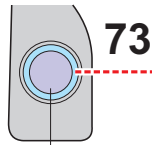


eduard
Express Mask

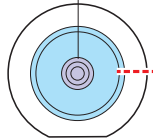
8083



2 pcs.



LIQUID MASK



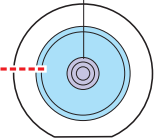
RP9 (RP10)
2 pcs.

56

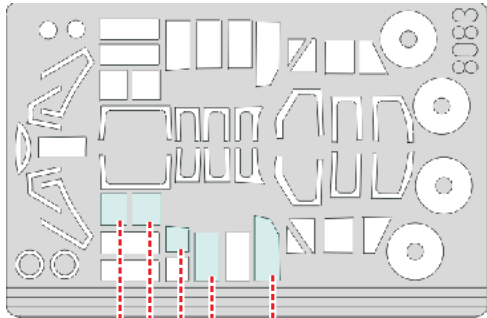
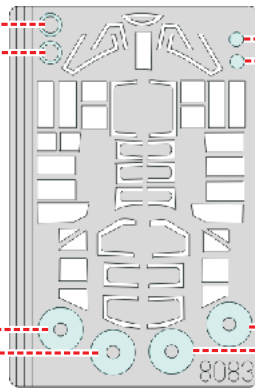
56



LIQUID MASK

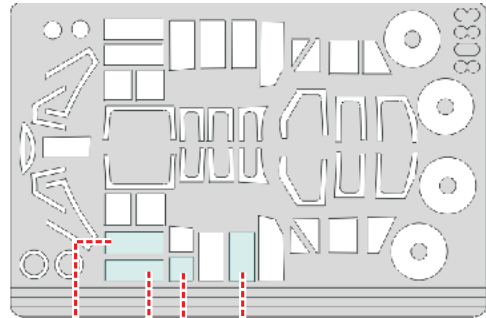
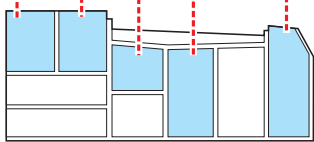


RP9 (RP10)
2 pcs.



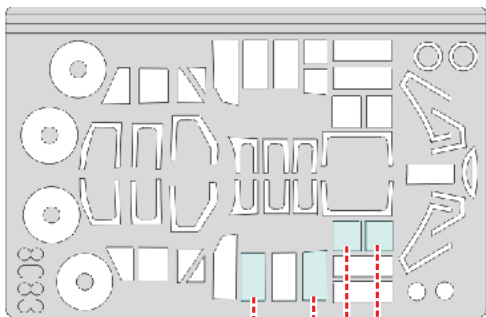
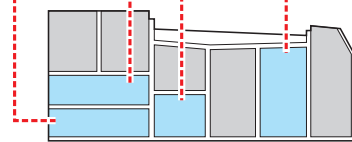
1.)

58



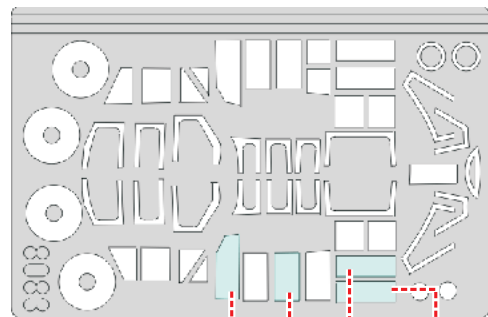
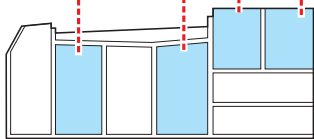
2.)

58



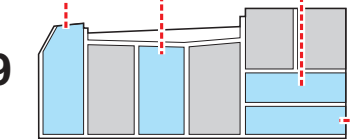
3.)

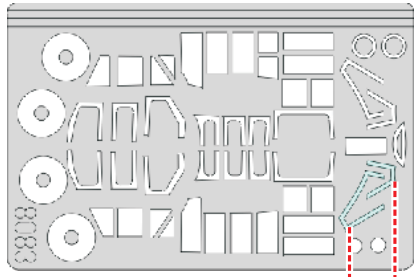
59



4.)

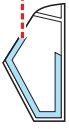
59



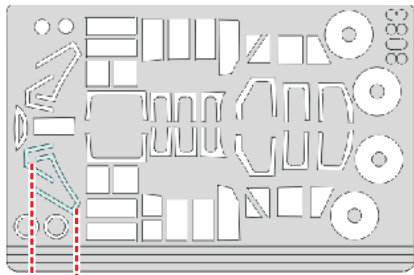
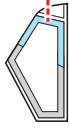


5.)

60

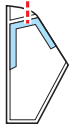


6.)

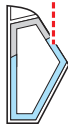


7.)

60

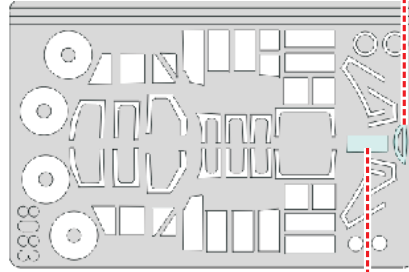
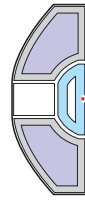


8.)



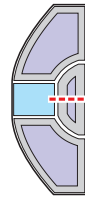
9.)

60

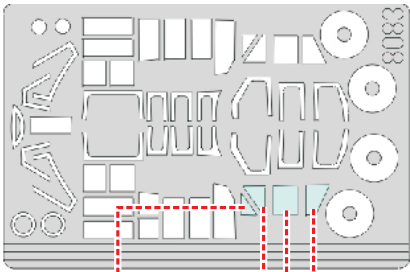


10.)

60

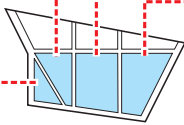


- LIQUID MASK



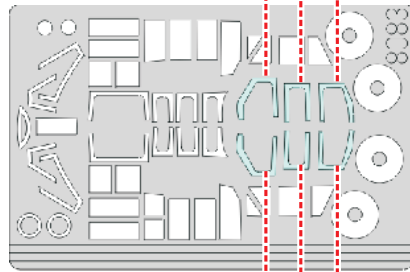
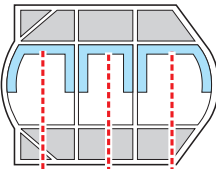
11.)

62



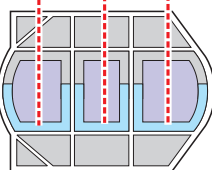
13.)

62



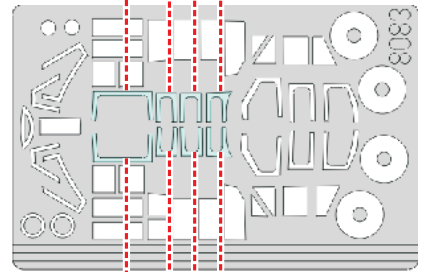
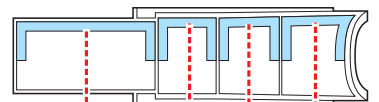
14.)

62



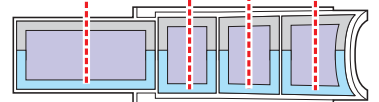
15.)

61



16.)

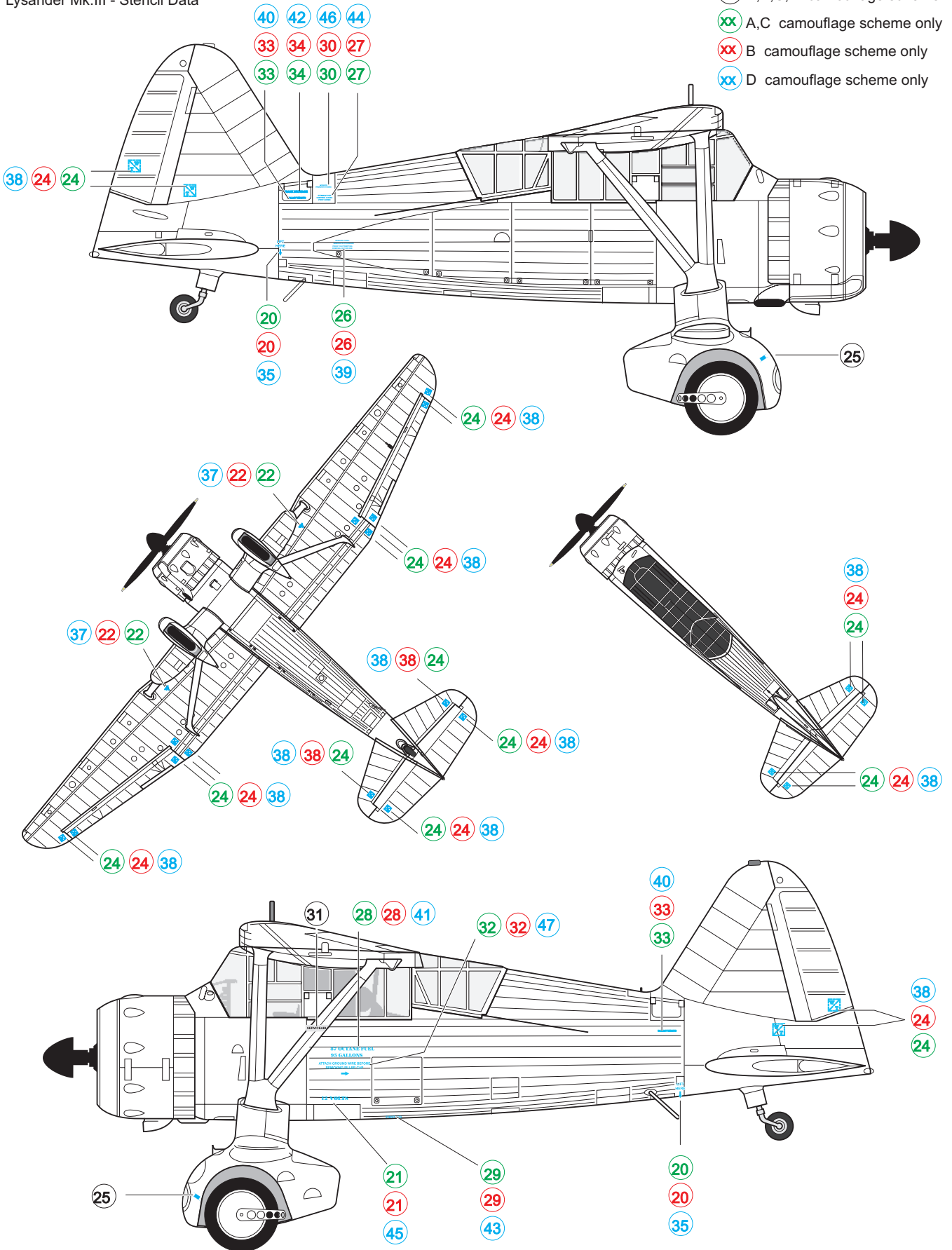
61



- LIQUID MASK

Lysander Mk.III - Stencil Data

- ⓧ A,B,C,D camouflage scheme
- ⓧ A,C camouflage scheme only
- ⓧ B camouflage scheme only
- ⓧ D camouflage scheme only





MARKING & PAINTING



OZNAČENÍ A ZBARVENÍ



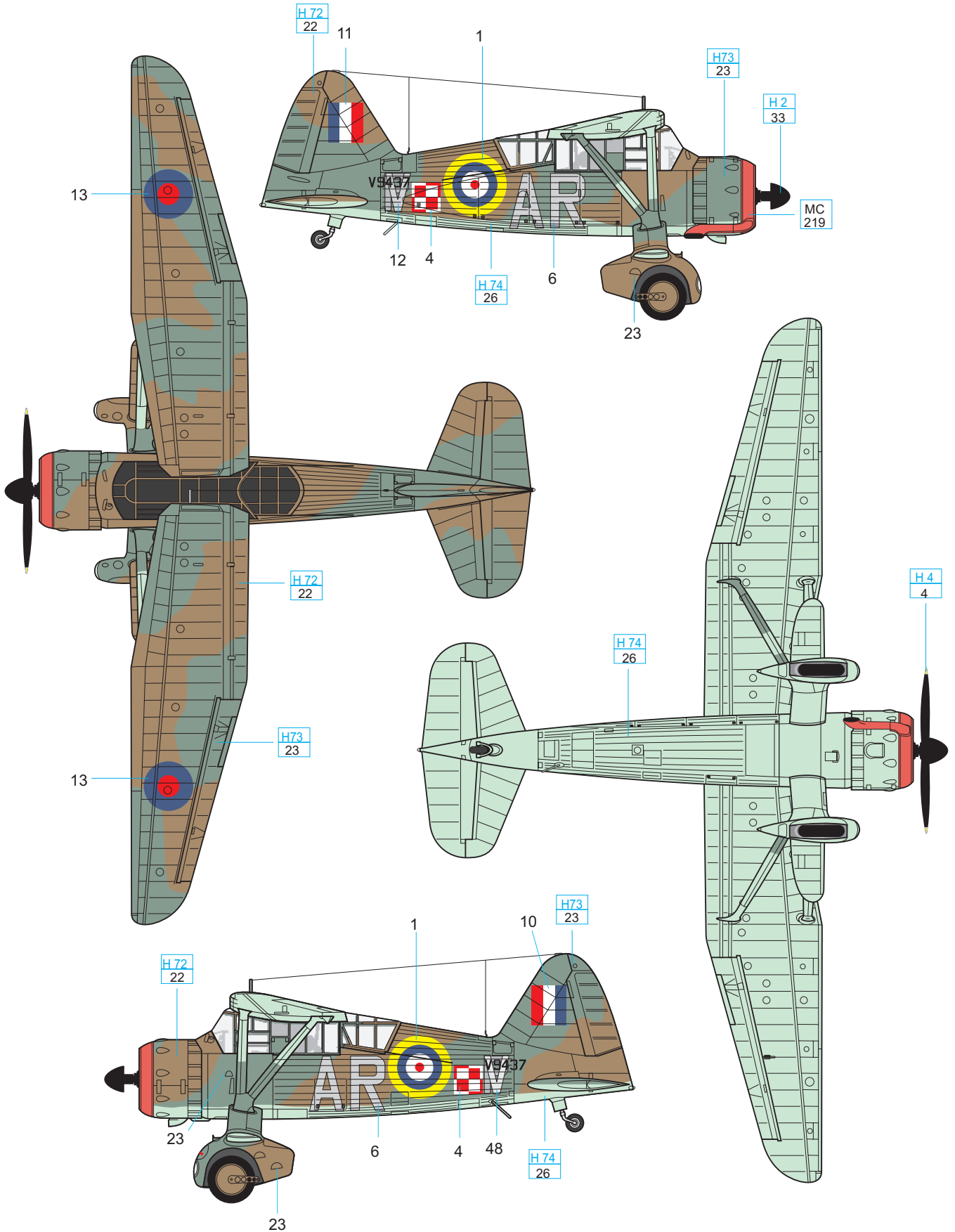
MARKIERUNGEN UND BEMALUNG



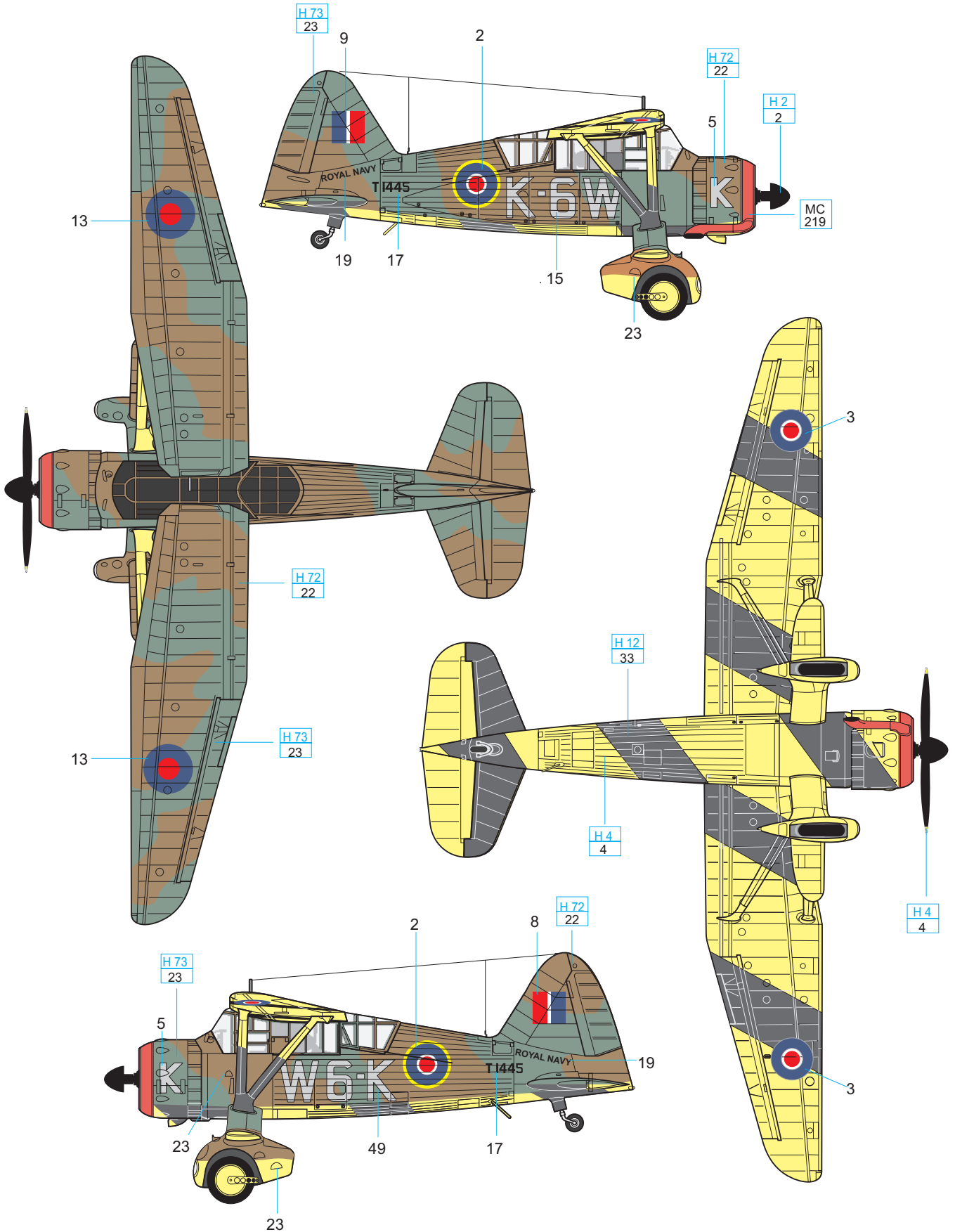
DECORATION ET PEINTURE

A

Lysander Mk.IIIA, No.309 (AC) "Ziemia Czerwienska(Polish) Sq.RAF, Dunino Aerodrome,Fife 1942-43
Lysander Mk.IIIA, 309. (AC)polská peru8RAF "Ziemia Czerwienska, Dunino Aerodrome,Fife 1942-43

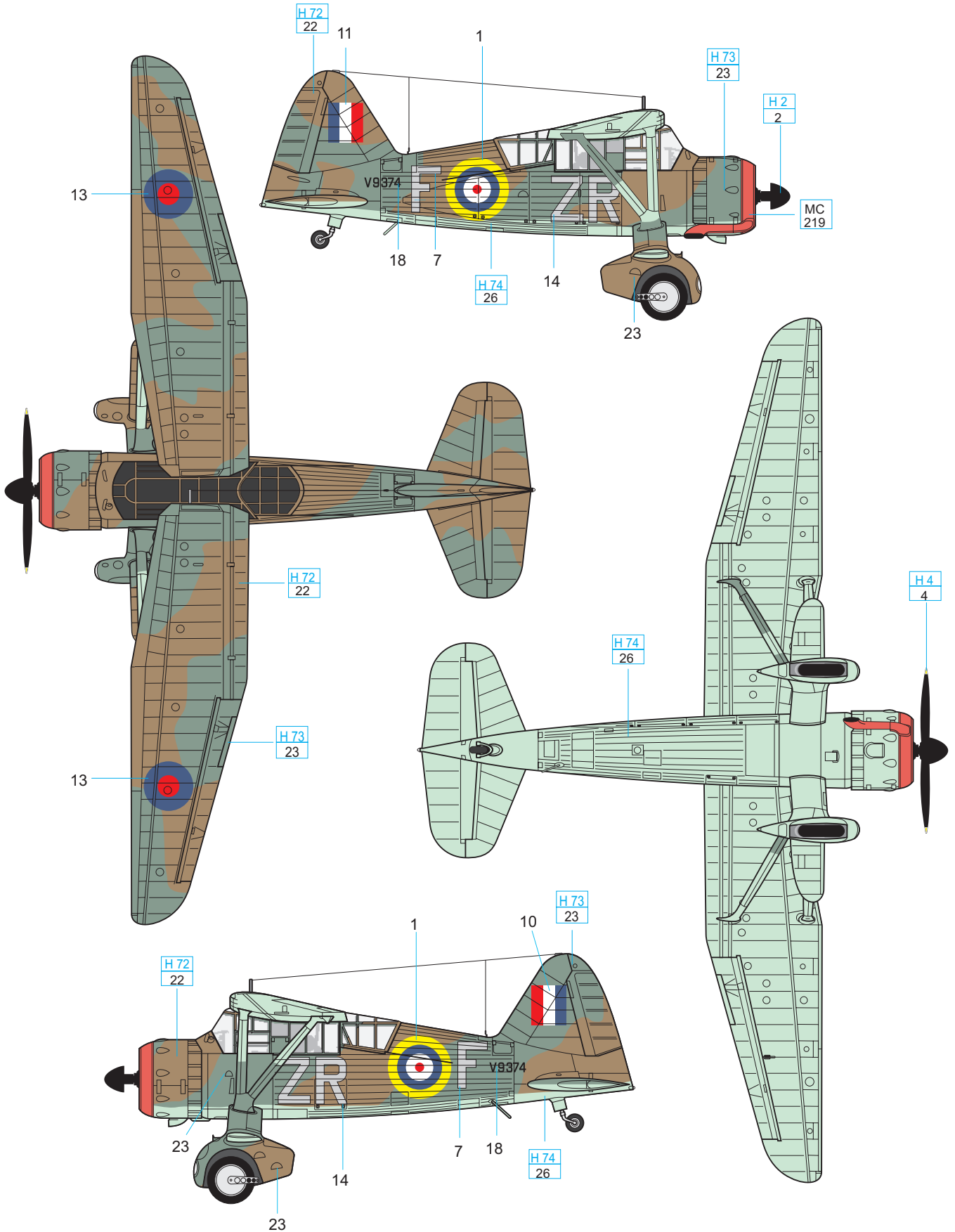


B Lysander TT Mk.III, No.755 NAS, FAA, Worthy Down, Hants., 1941-42
 Lysander TT Mk.II, 755. peru NAS, FAA, Worthy Down, Hants., 1941-42



C

Lysander Mk.IIIA, No.613 Sq.RAF, 1941
 Lysander Mk.IIIA, 613. peru RAF, 1941



D Lysander Mk.IIIA, No.161 (SD) Sq.RAF, Tempsford, 1942
 Lysander Mk.IIIA, 161. (SD) peru RAF, Tempsdorf, 1942

