



Fokker D.VII

ATTENTION * UPOZORNĚNÍ * ACHTUNG * ATTENTION * 注意

- GB** Carefully read instruction sheet before assembling. When you use glue or paint, do not use near open flame and use in well ventilated room. Keep out of reach of small children. Children must not be allowed to suck any part, or pull vinyl bag over the head.
- CZ** Před započatím stavby si pečlivě prostudujte stavební návod. Při používání barev a lepidel pracujte v dobře větrané místnosti. Lepidla ani barvy nepoužívejte v blízkosti otevřeného ohně. Model není určen malým dětem, mohlo by dojít k požití drobných částí.
- F** lire soigneusement la fiche d'instructions avant d'assembler. Ne pas utiliser de colle ou de peinture à proximité d'une flamme nue, et aérer la pièce de temps en temps. Garder hors de portée des enfants en bas âge. Ne pas laisser les enfants mettre en bouche ou sucer les pièces, ou passer un sachet vinyl sur la tête.
- D** Von dem Zusammensetzen die Bauanleitung gut durchlesen. Kleber und Farbe nicht nahe von offenem Feuer verwenden und das Fenster von Zeit zu Zeit Belüftung öffnen. Bausatz von kleinen Kindern fernhalten. Verhüten Sie, daß Kinder irgendwelche Bauteile in den Mund nehmen oder Plastiktüten über den Kopf ziehen.
- JP** 組み立てる前に必ず説明書をお読み下さい。接着剤や塗料をご使用の際は、窓を開けて十分な換気をおこない、火のそばでは使用しないで下さい。小さな子供の手の届かない所に必ず保管してください。部品や破片を噛んだり、なめたり、飲んだりすると大変危険です。又、部品を取り出した後のビニール袋は、小さな子供が頭から被ったりすると窒息する恐れがありますので、破り捨てて下さい。

INSTRUKTION SIGNS * INSTR. SYMBOLY * INSTRUKTION SINNBILDEN * SYMBOLES * 記号の説明

- | | | | | | | |
|---|---|---|--|---|--|--|
| 
OPTIONAL
FACULTATIF
NACH BELIEBEN
VOLBA
選択する | 
BEND
PLIER SIL VOUS PLAIT
BITTE BIEGEN
OHNOUT
折る | 
OPEN HOLE
FAIRE UN TROU
OFFNEN
VYVRTAT OTVOR
穴を開ける | 
SYMETRICAL ASSEMBLY
MONTAGE SYMÉTRIQUE
SYMMETRISCHE AUFBAU
SYMETRICKÁ MONTÁŽ
左右均等に組み立てる | 
NOTCH
L INCISION
DER EINSCHNITT
ZÁŘEZ
切る | 
REMOVE
RETIRER
ENTFERNEN
ODŘÍZNOUT
移す | 
APPLY EXPRESS MASK
AND PAINT BEFORE
GLUING
POUŽIT EXPRESS MASK
NABARVIT PŘED SLEPENÍM |
|---|---|---|--|---|--|--|



GUNZE		
AQUEOUS	Mr.COLOR	
H 11	62	WHITE
H 12	33	FLAT BLACK
H 37	43	WOOD BROWN
H 47	41	RED BROWN
H 53	13	GRAY
H 85	45	SAIL COLOR
H 302	302	GREEN
H 344		RUST
H 423	423	DARK GREEN
H 306	306	GRAY

S. METALIC	Mr.COLOR	
SM01	8	SUPER FINE SILVER
SM04		SUPER STAINLESS

Mr.METAL COLOR	
MC212	IRON
MC214	DARK IRON
MC219	BRASS

PARTS



DÍLY



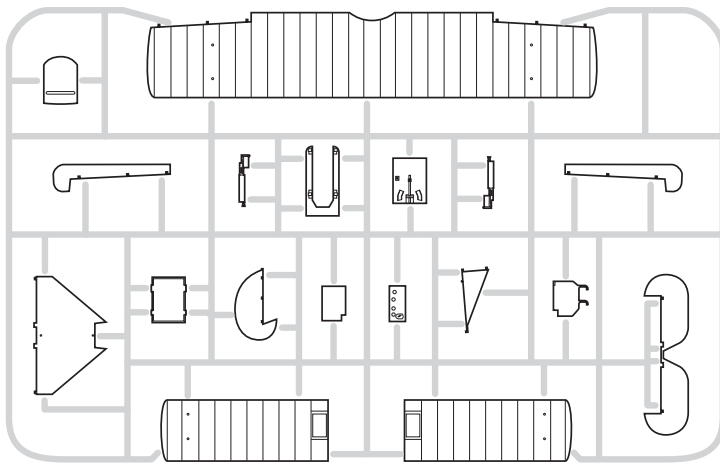
TEILE



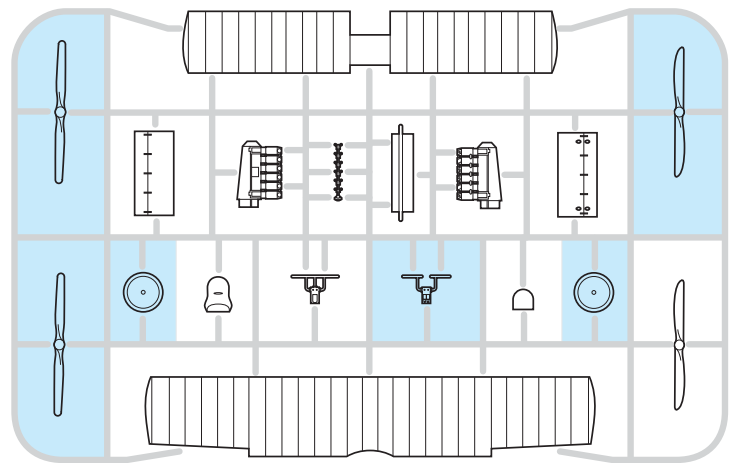
PIÈCES

PLASTIC PARTS

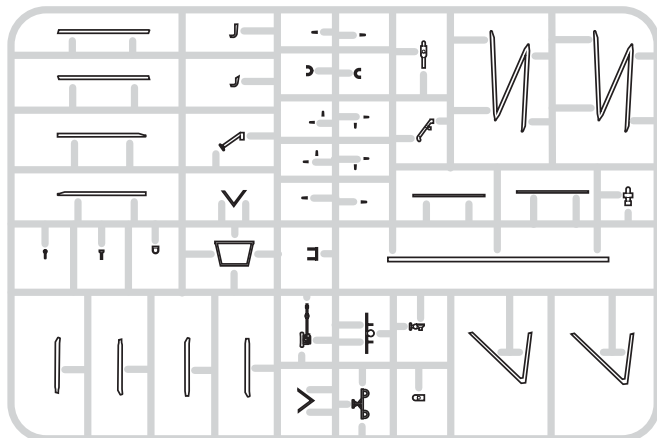
A>



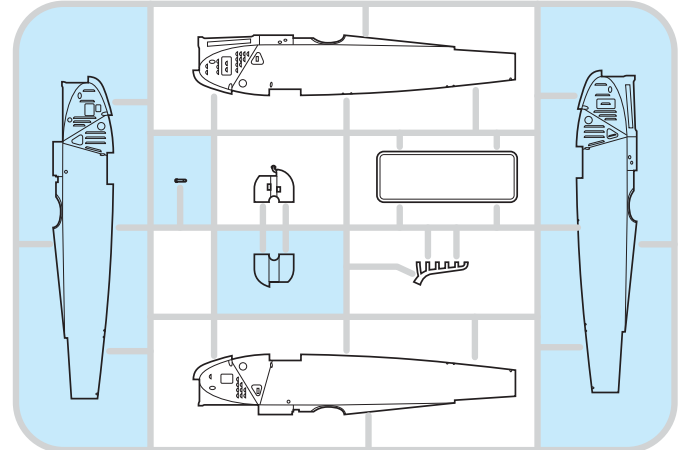
B>



C>

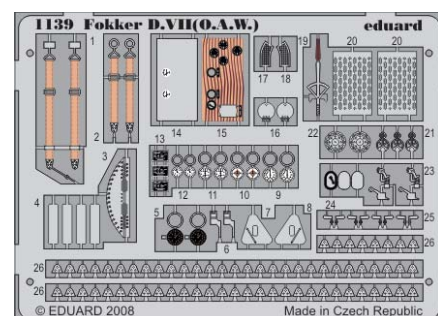
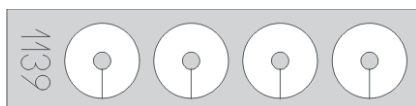


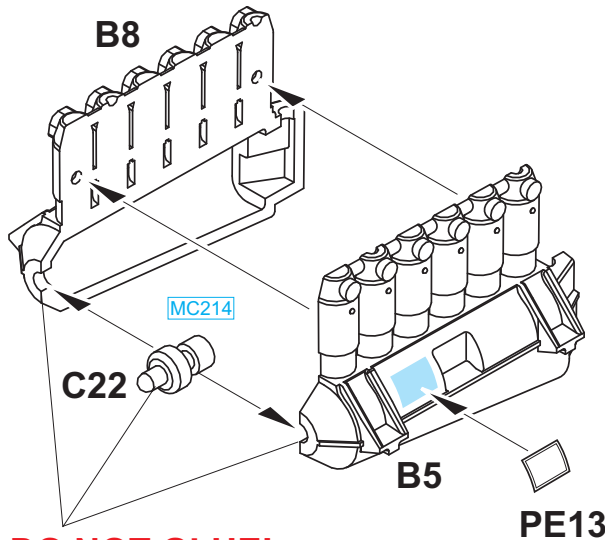
D>



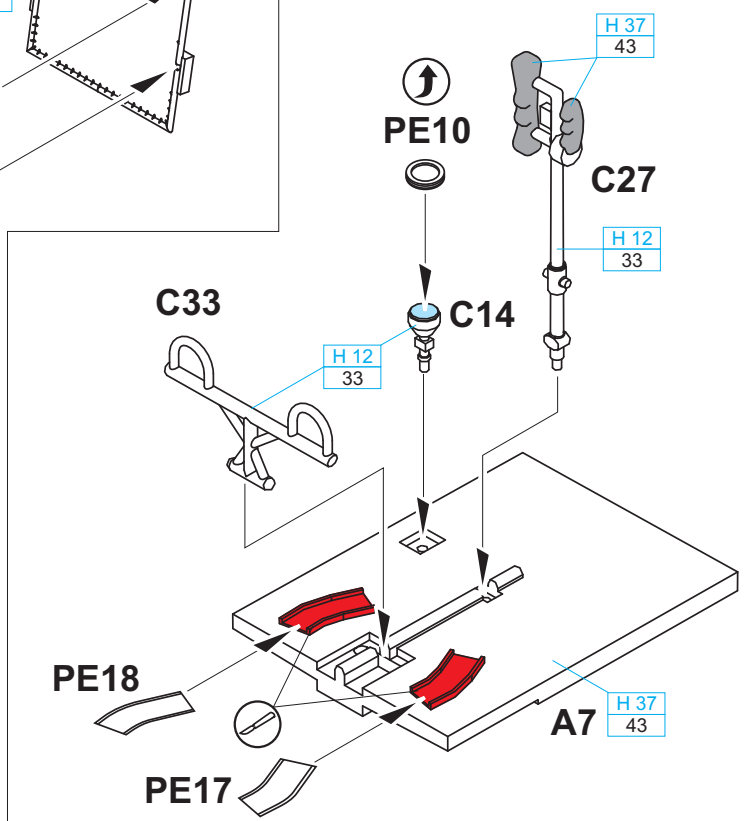
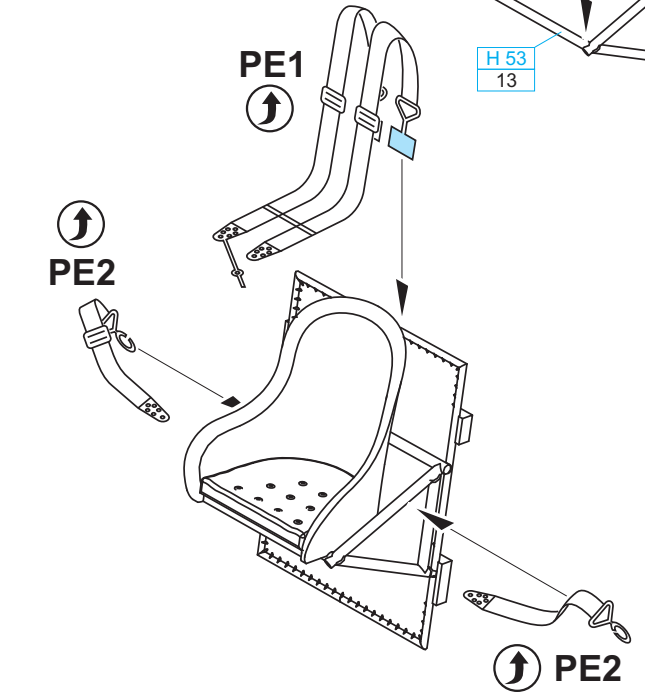
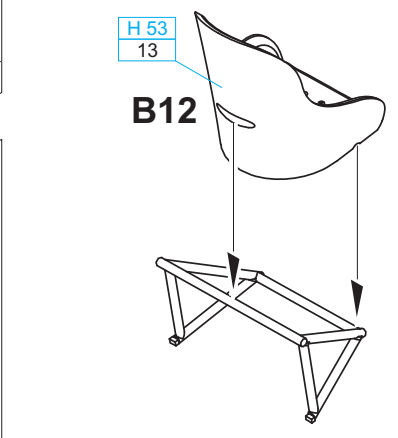
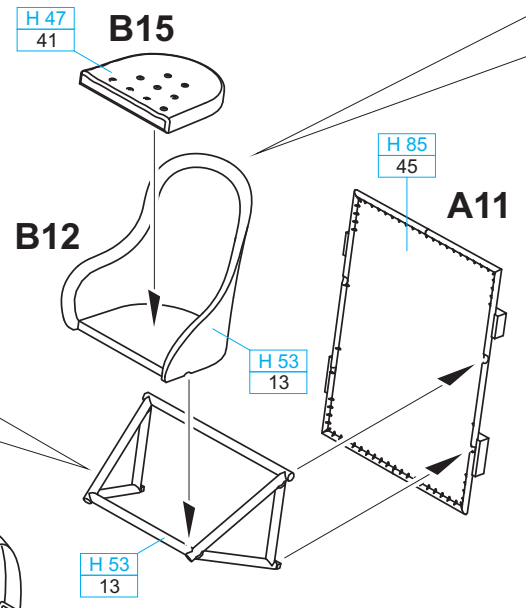
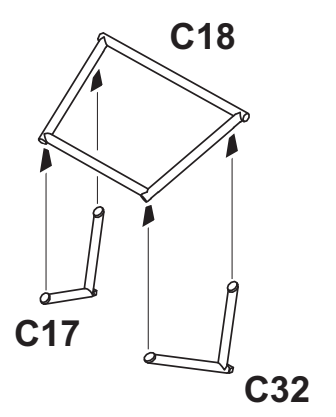
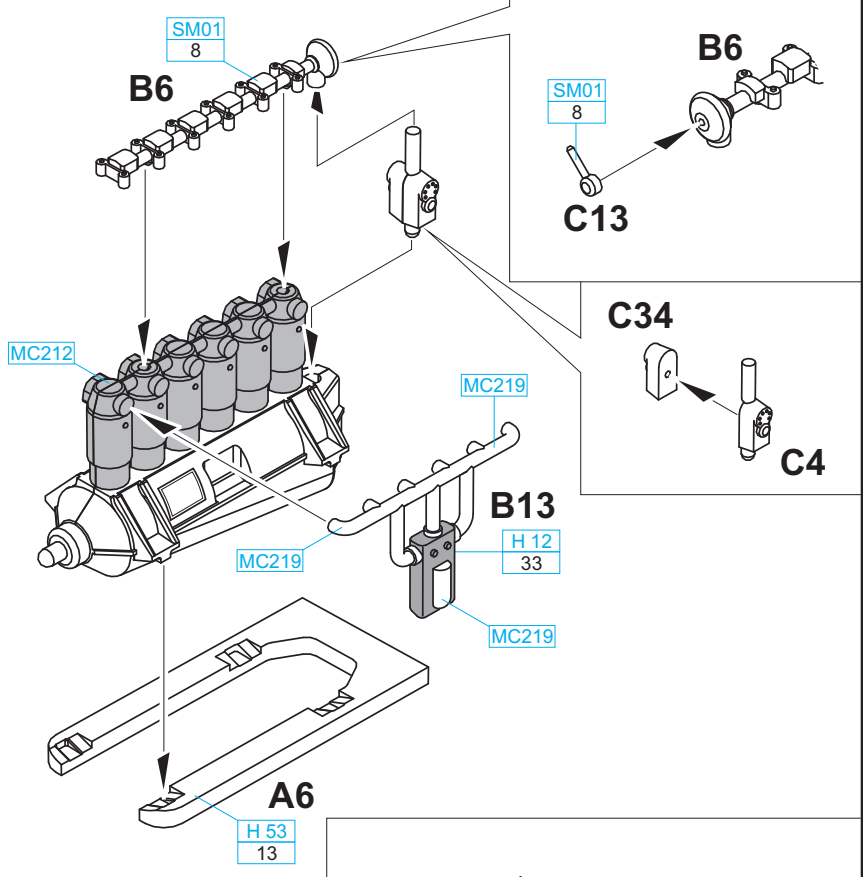
PE - PHOTO ETCHED DETAIL PARTS

eduard
MASK

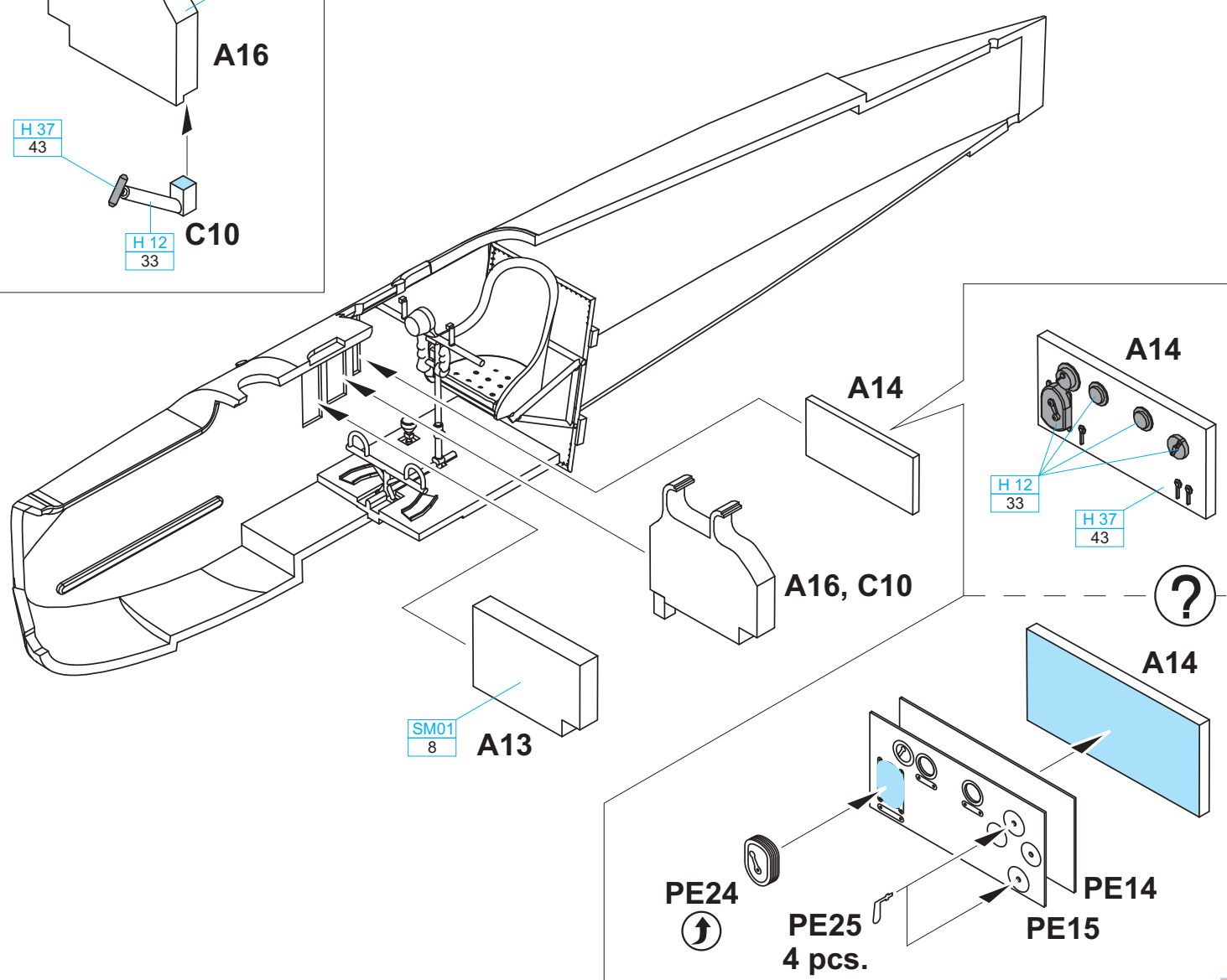
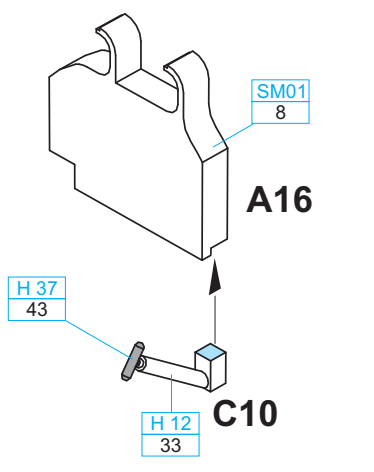
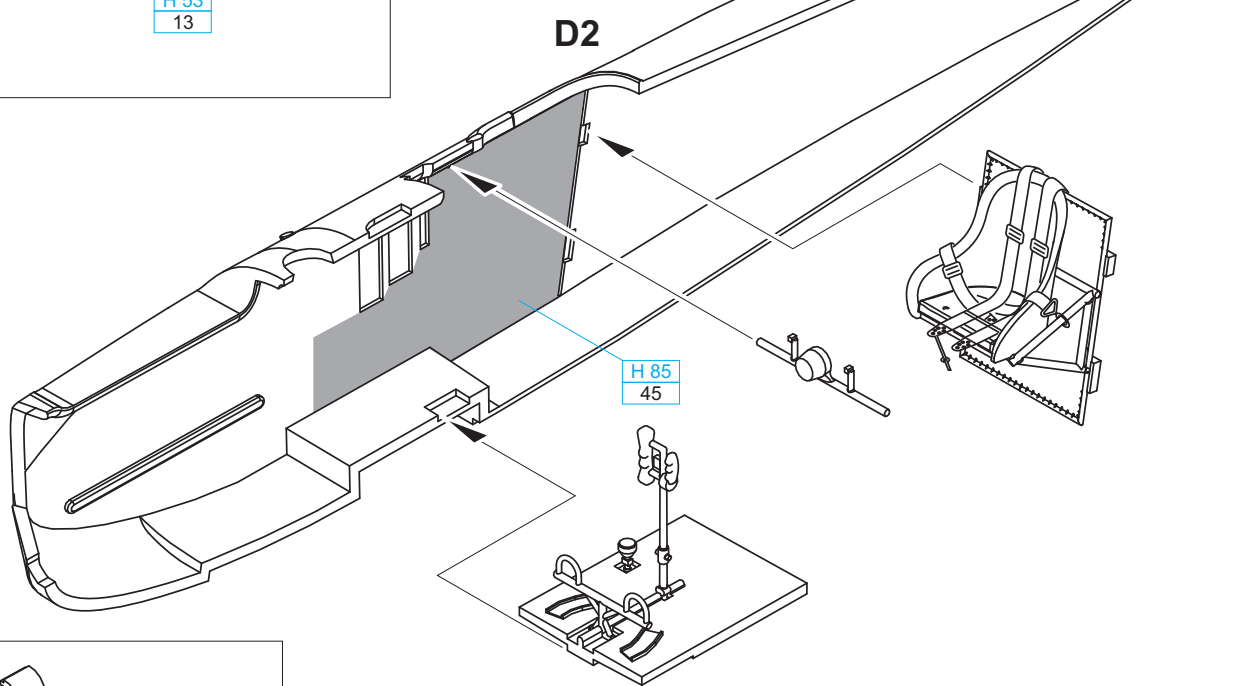
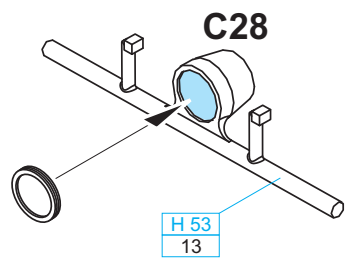


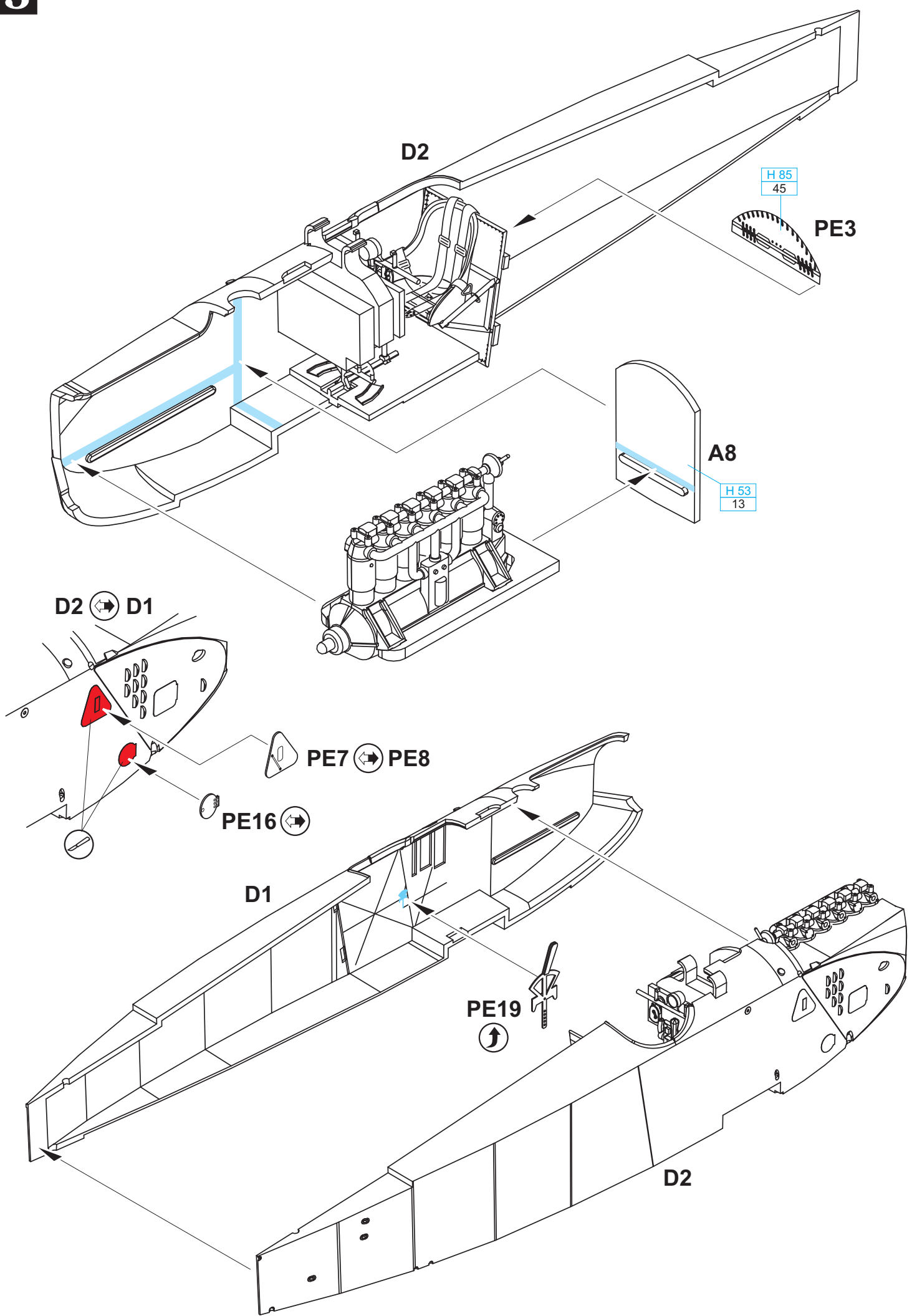


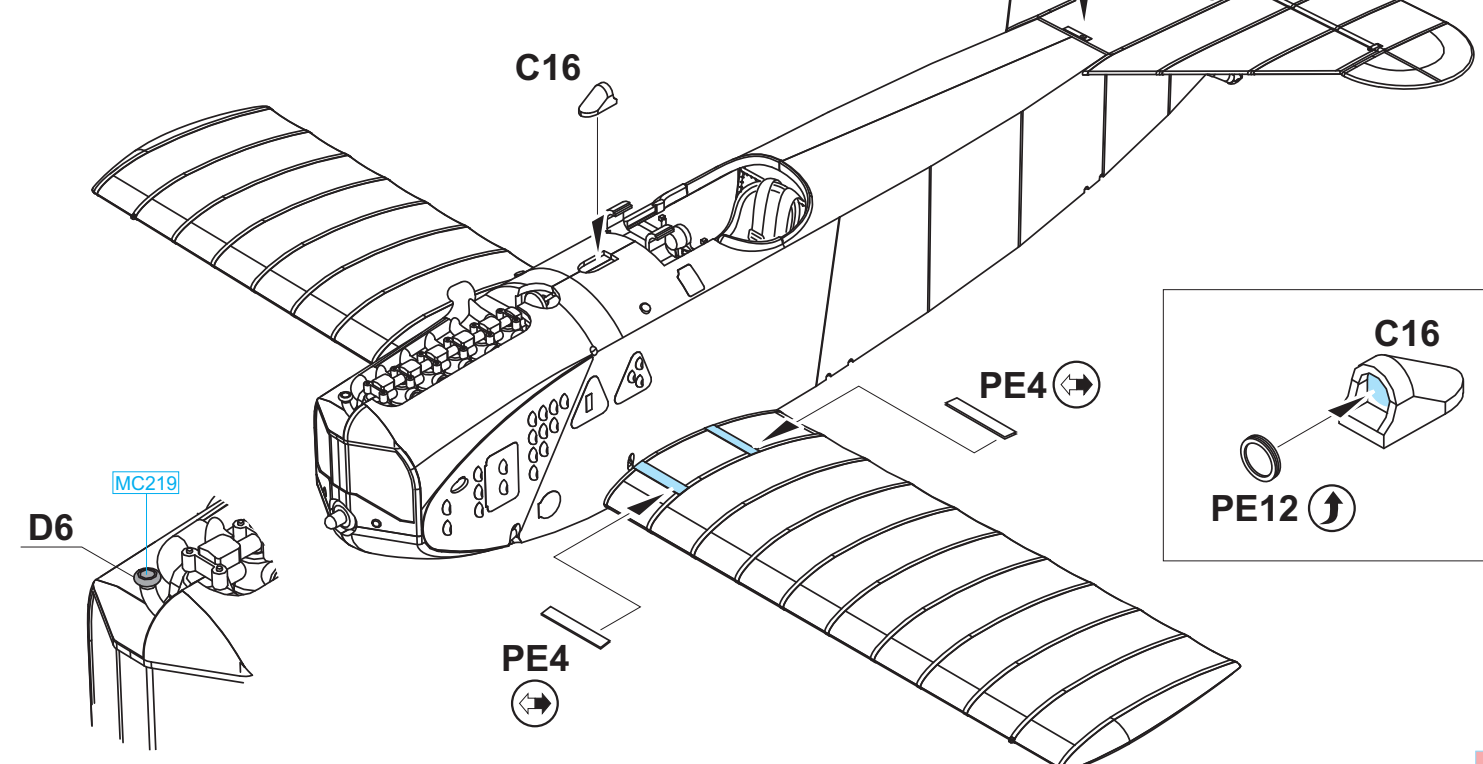
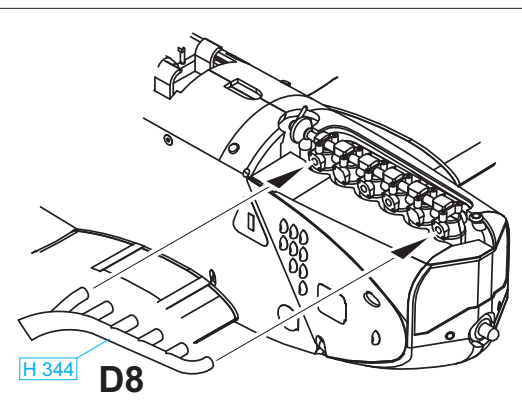
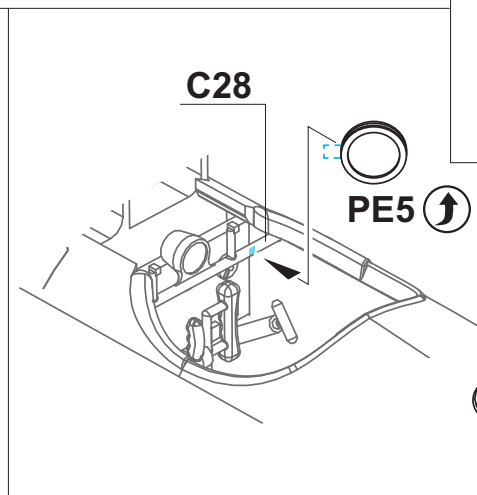
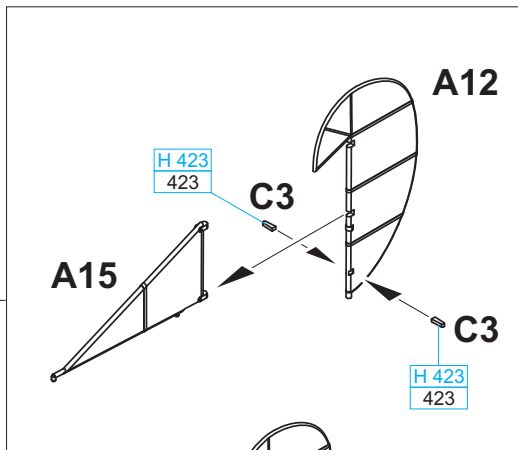
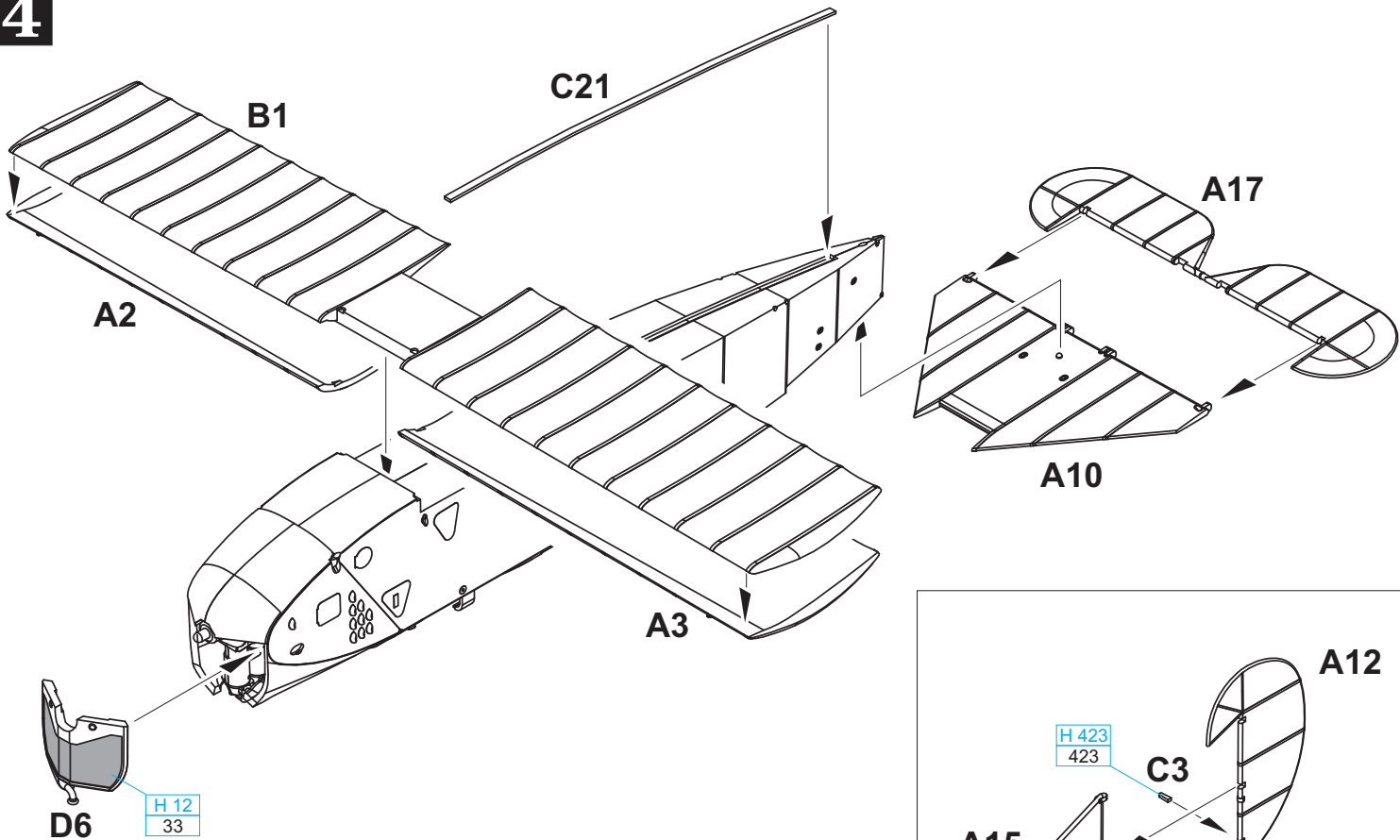
**DO NOT GLUE!
NELEPIT!**

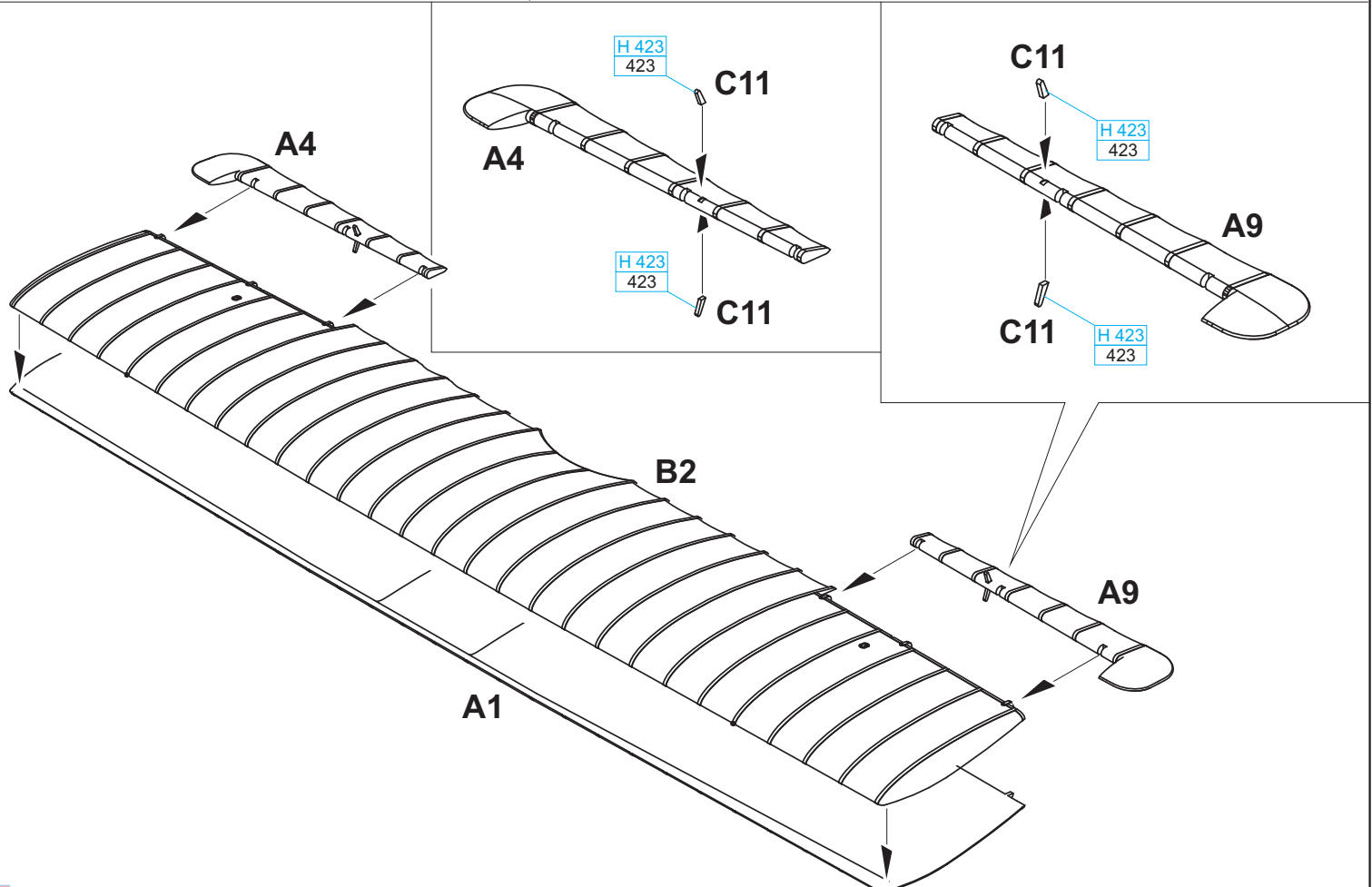
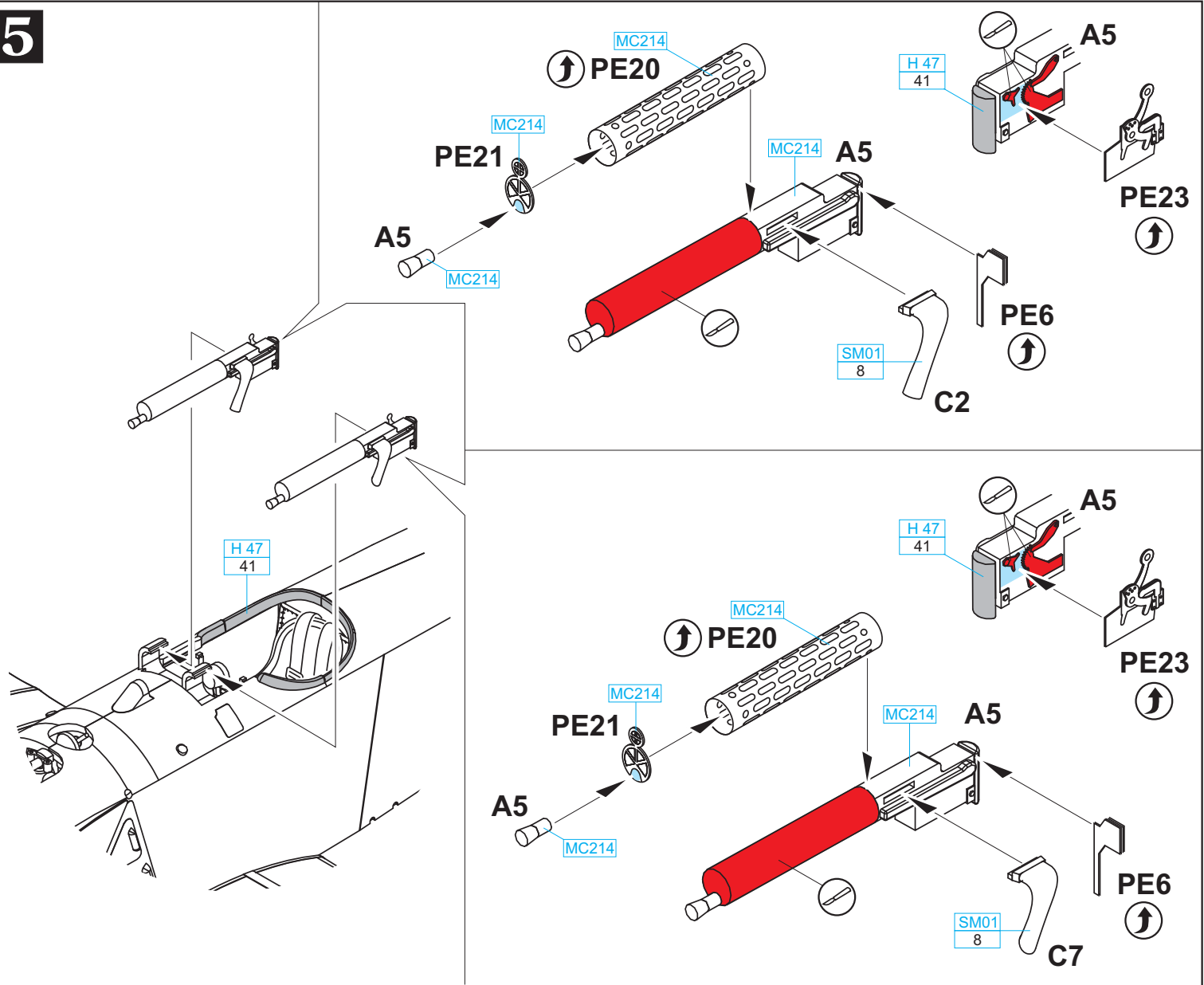


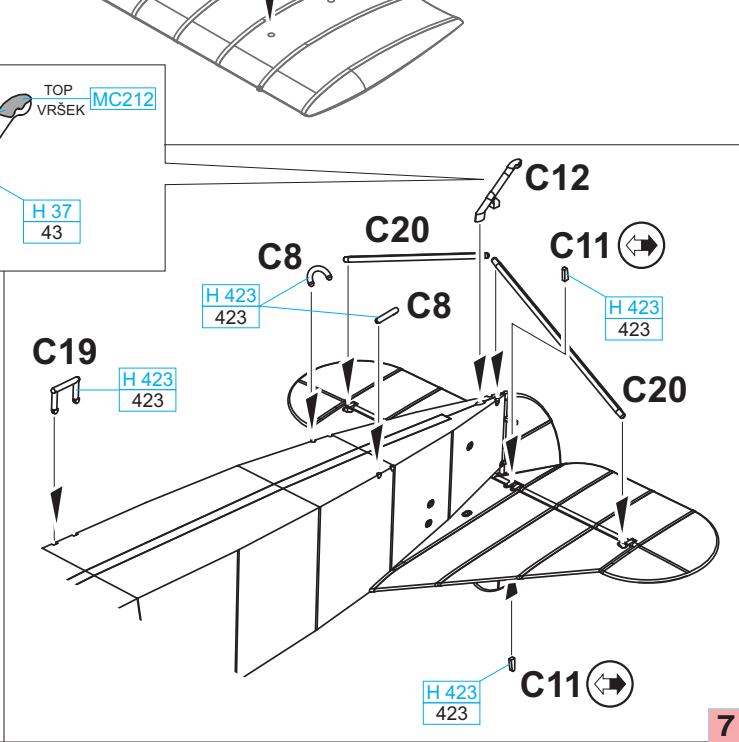
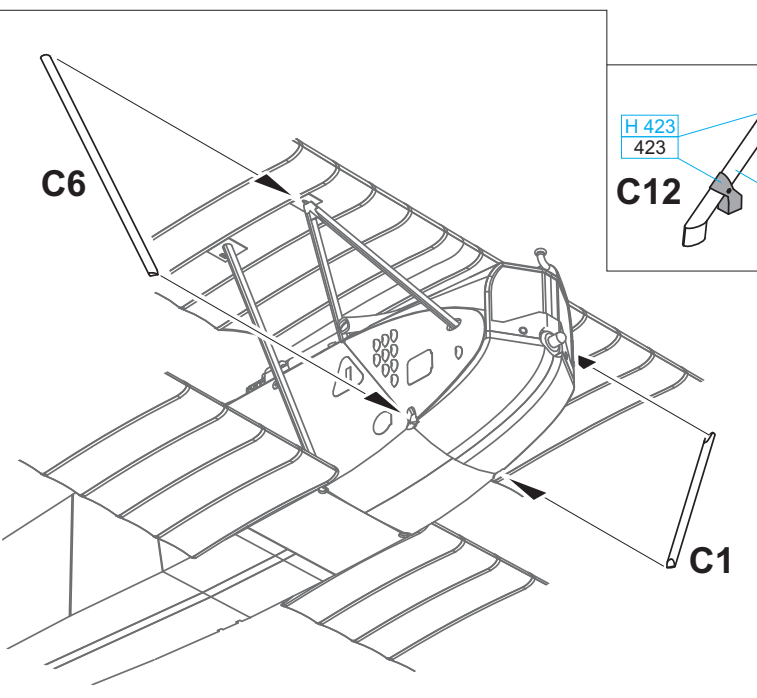
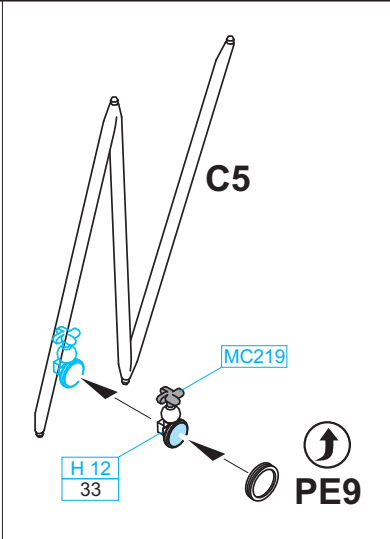
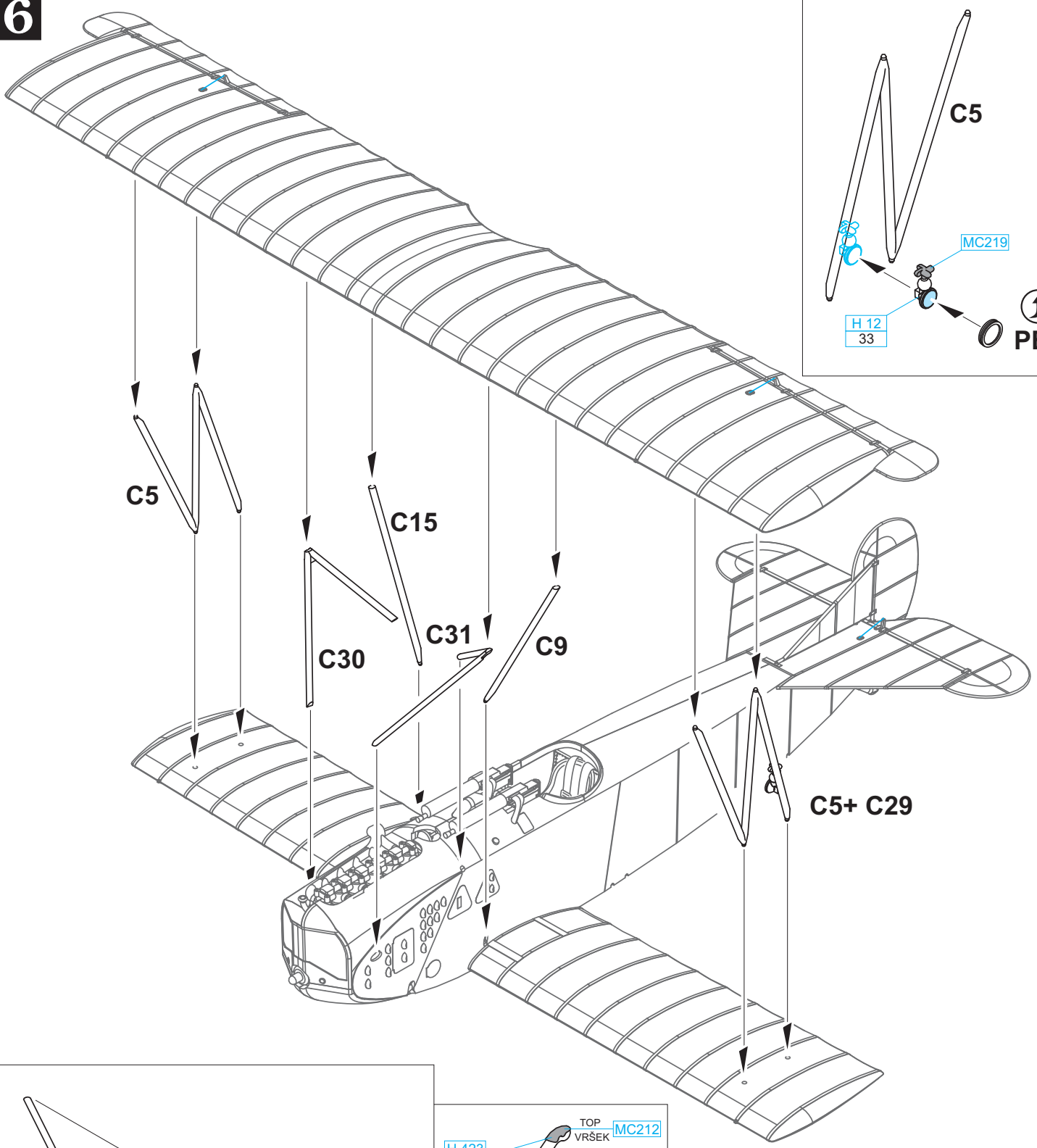
2



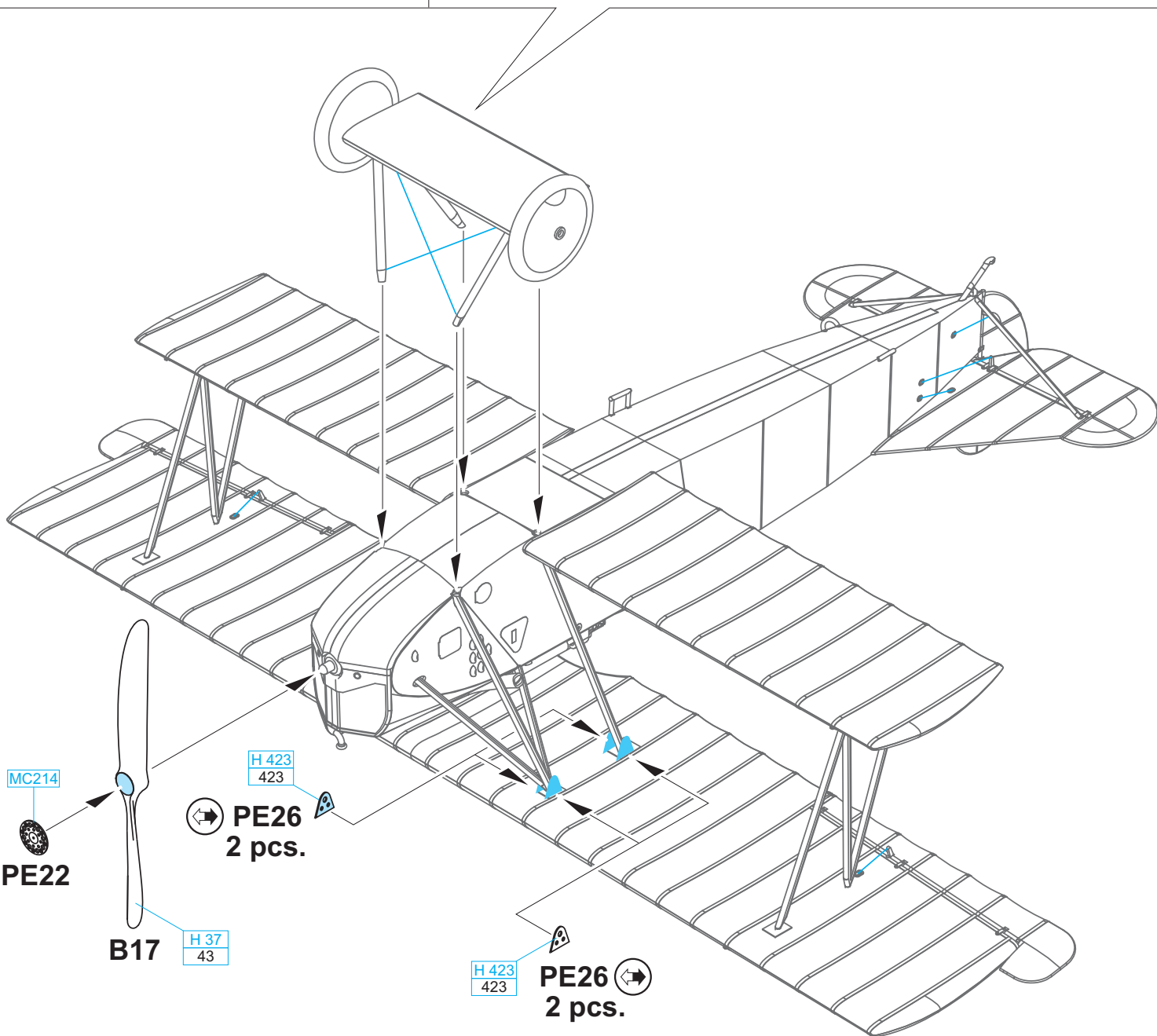
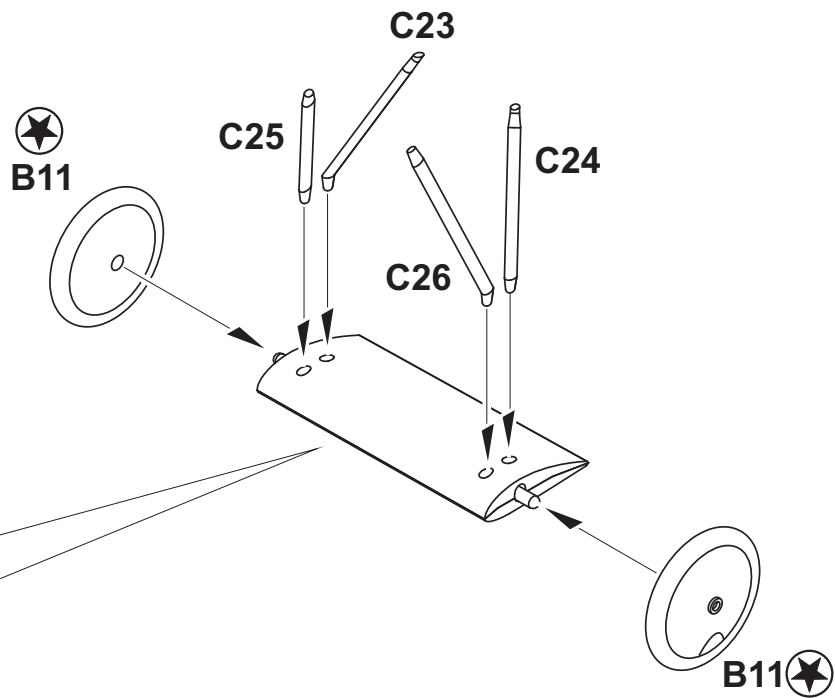
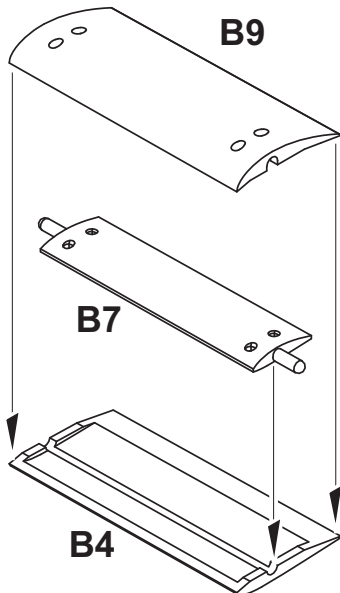




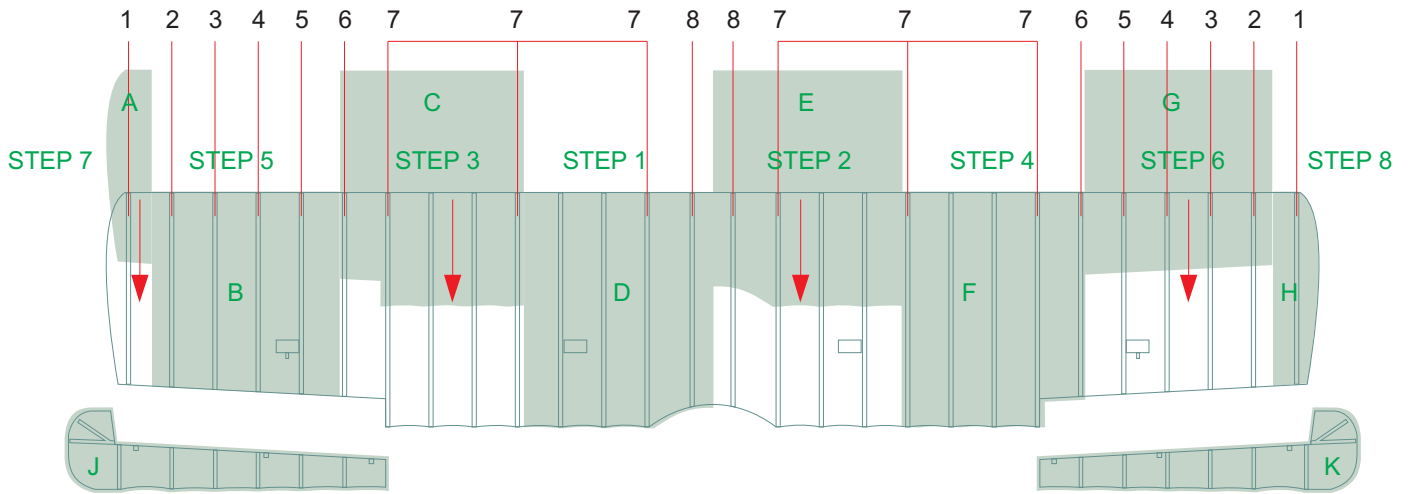




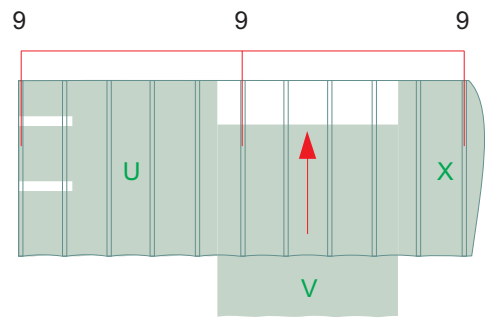
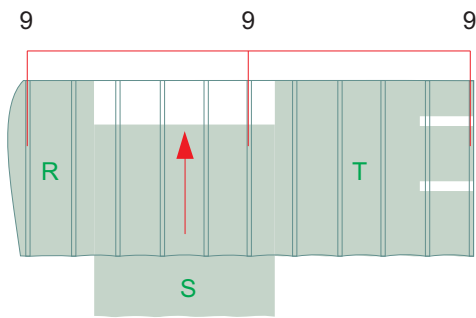
7



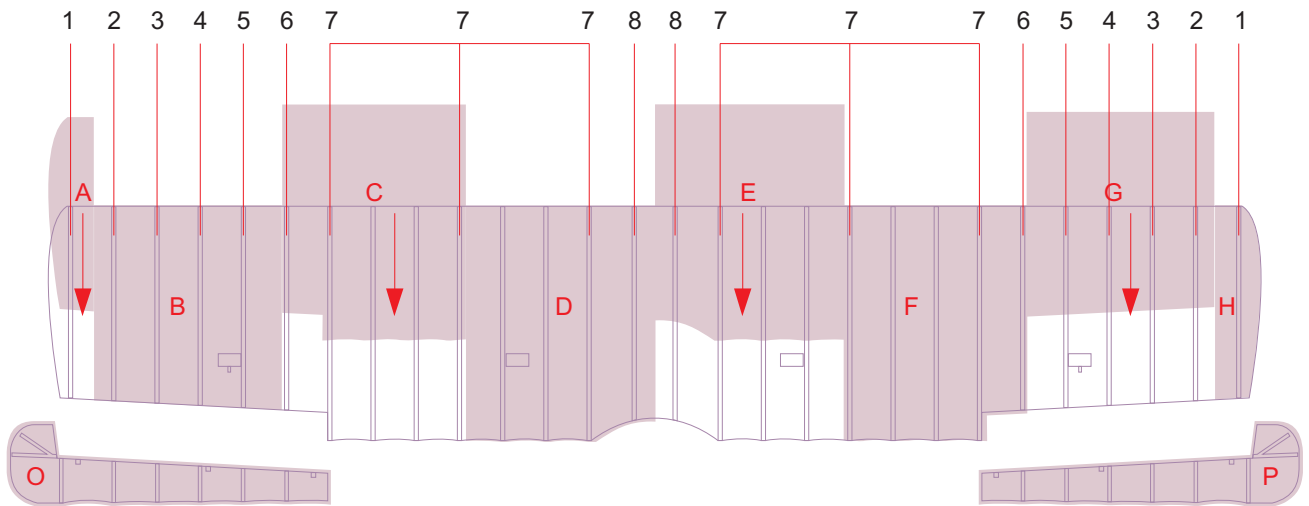
PORTY



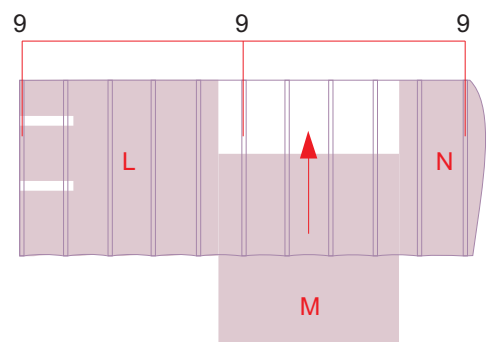
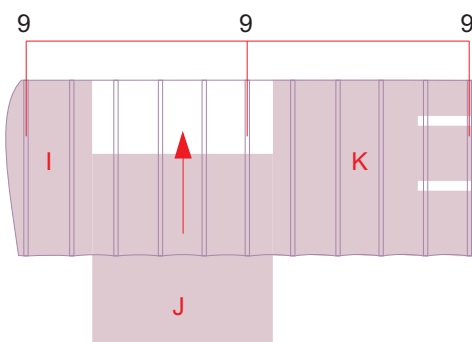
TOP 4 color



PORTY

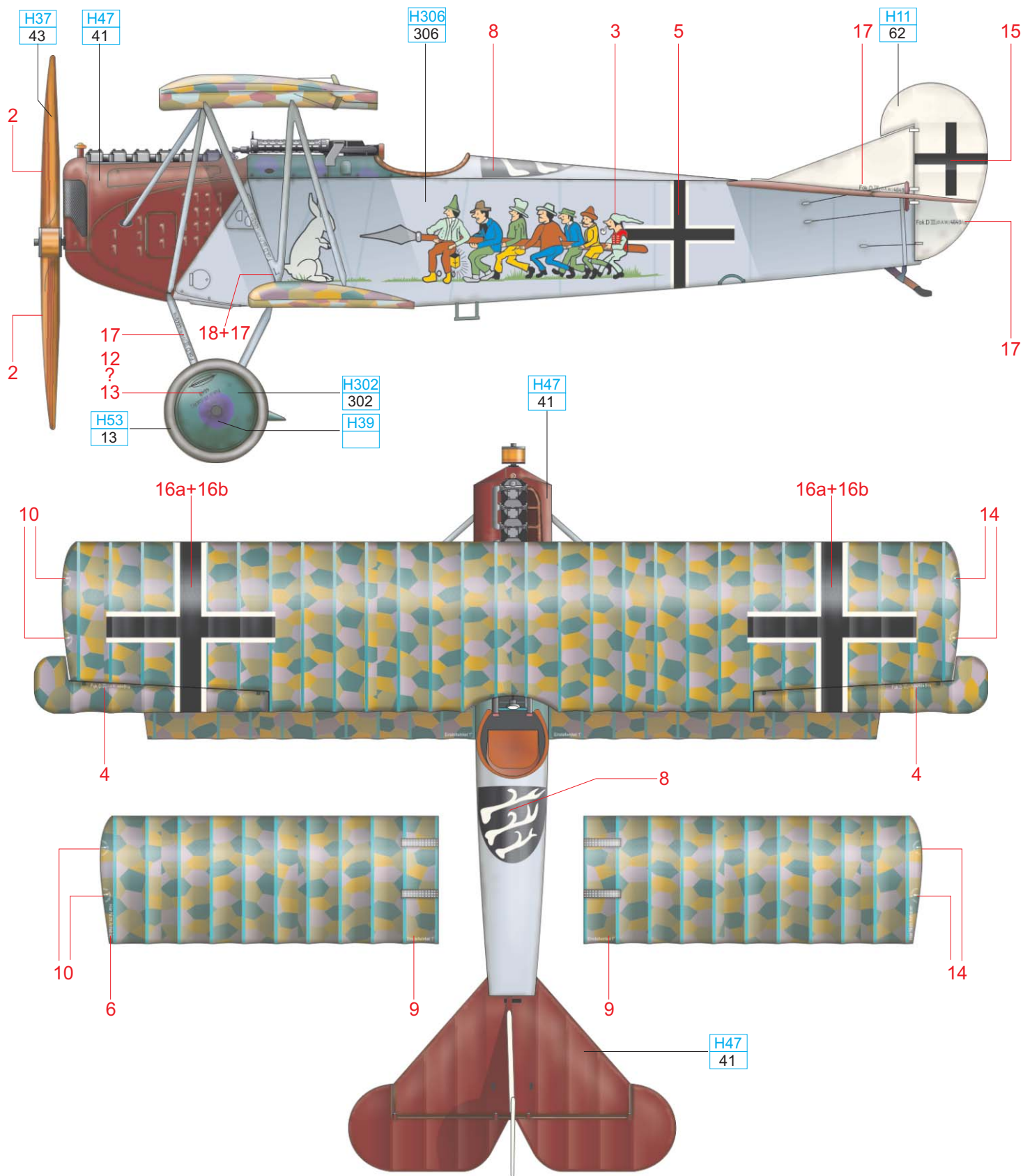


BOTTOM 4 color



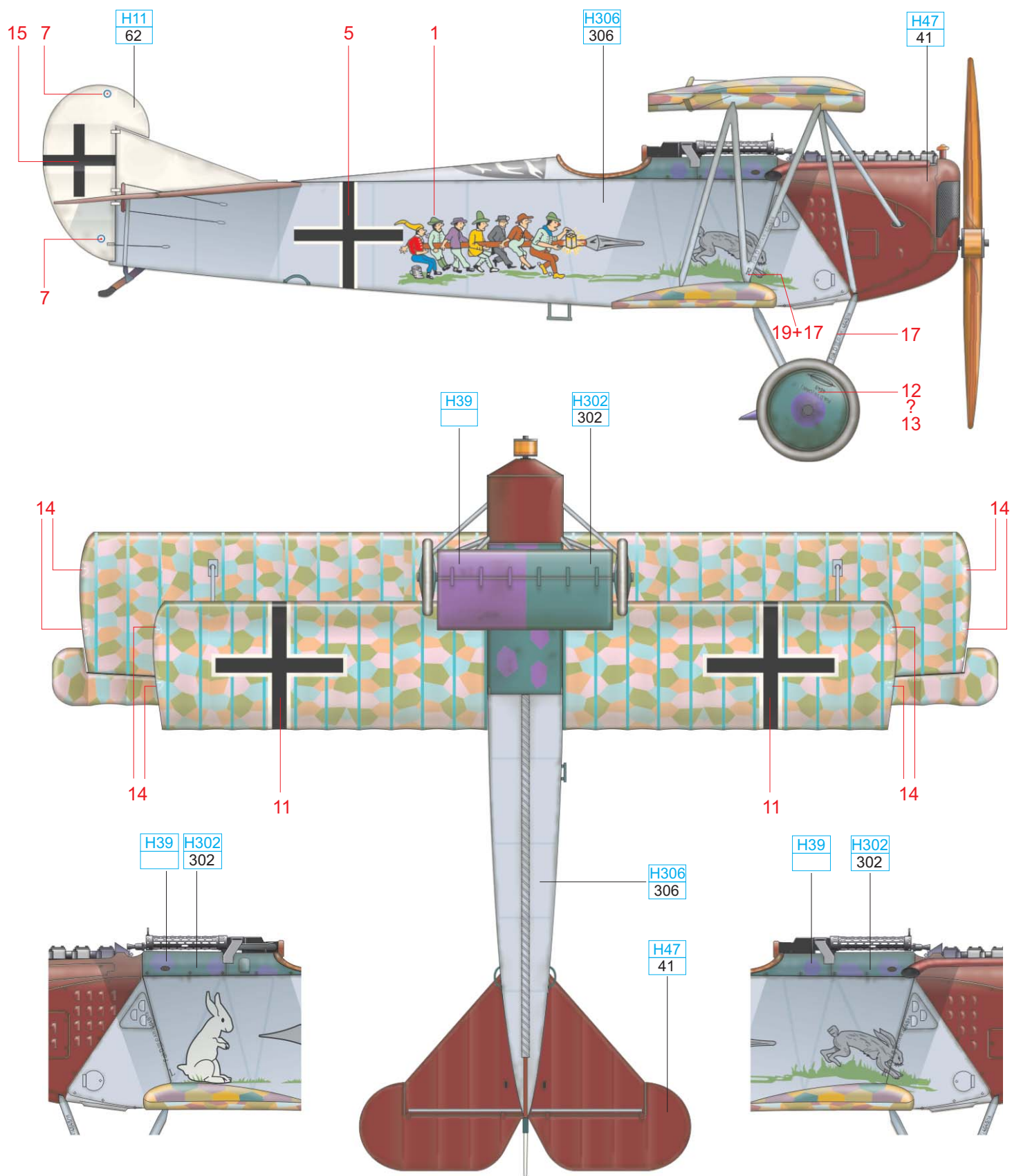
Fokker D.VII (O.A.W.) Sieben Schwaben

Gefr. Wilhelm Scheutzel nastoupil k Jasta 65 12. června 1918 a zůstal s ní až do konce války. Létal s Fokkerem D.VII(OAW) výrobního čísla 4649/18, ozdobeném motivy z pohádky O sedmi Švábech. Možná v tomto stroji dosáhl 13.8.1918 svého jediného sestřelu, když poslal k zemi D.H.4 u Armaville.



WHITE	H11 62	GRAY	H306 306
GRAY	H53 13	WOOD	H37 43
		VIOLET	H39
		DARK GREEN	H302 302
		RED BROWN	H47 41

Gefr. Wilhelm Scheutzel joined Jasta 65 at June 12, 1918 and served with the unit until end of the war. He flew Fokker D.VII(OAW) 4649/18, decorated by motives of the Seven Schwabians tales. He got the single victory in the Great War, possible flying this kite, when he shot down a D.H.4 near Armawille.



WHITE	H11 62	GRAY	H306 306
-------	-----------	------	-------------

GRAY	H53 13	WOOD	H37 43
------	-----------	------	-----------

VIOLET	H39
--------	-----

DARK GREEN	H302 302
------------	-------------

RED BROWN	H47 41
-----------	-----------